

HOCKING COUNTY

FALLS GORE

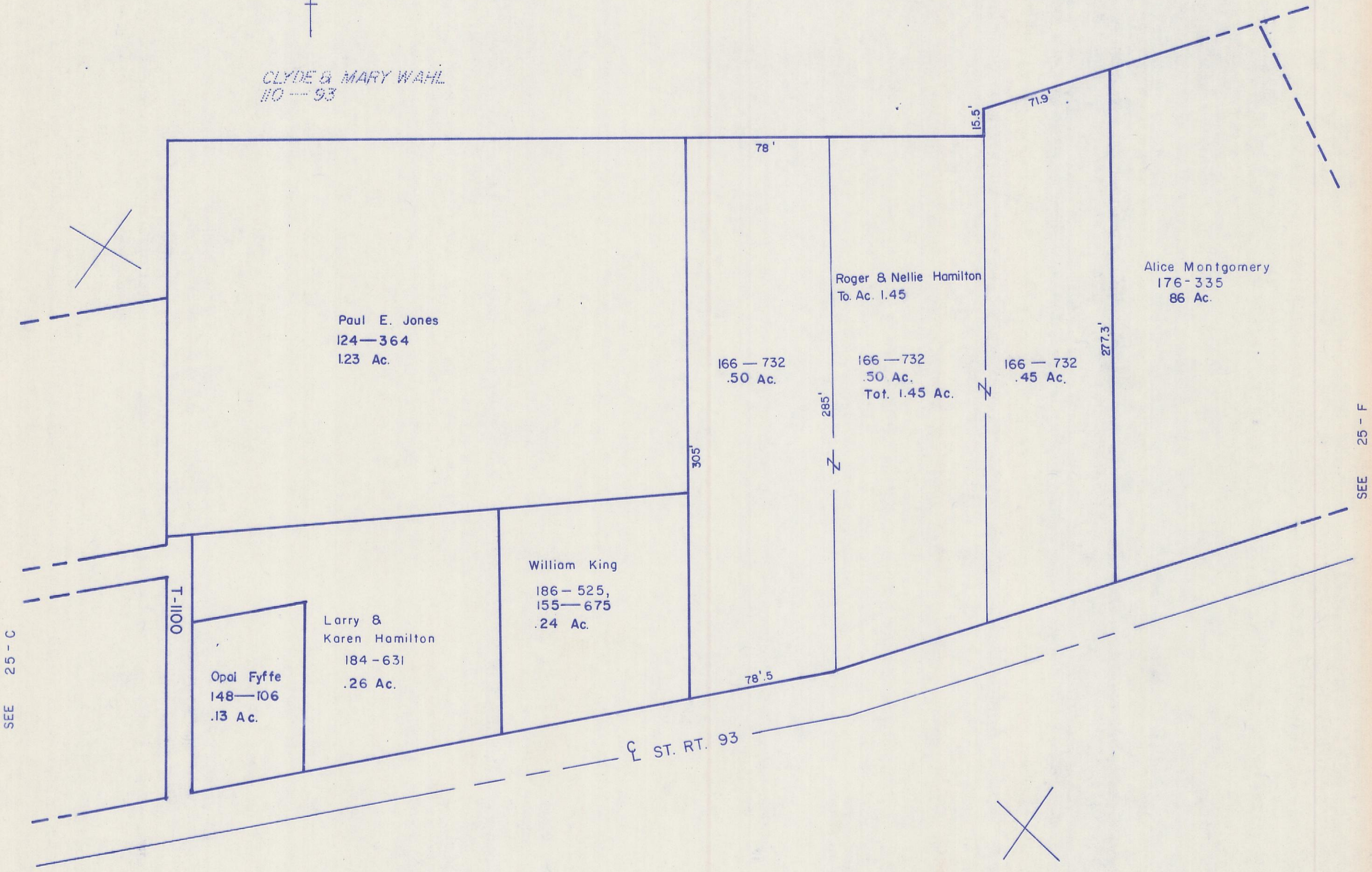
SEC. 25 T 14 R 16

Scale 1" = 50'

25 - E



CLYDE & MARY WAHL
110 - 93



Paul E. Jones
124-364
1.23 Ac.

166-732
.50 Ac.

Roger & Nellie Hamilton
To. Ac. 1.45

166-732
.50 Ac.
Tot. 1.45 Ac.

166-732
.45 Ac.

Alice Montgomery
176-335
86 Ac.

William King
186-525,
155-675
.24 Ac.

Larry &
Karen Hamilton
184-631
.26 Ac.

Opai Fyffe
148-106
.13 Ac.

SEE 25 - C

0011-1

ST. RT. 93

SEE 25 - F

25 - E