

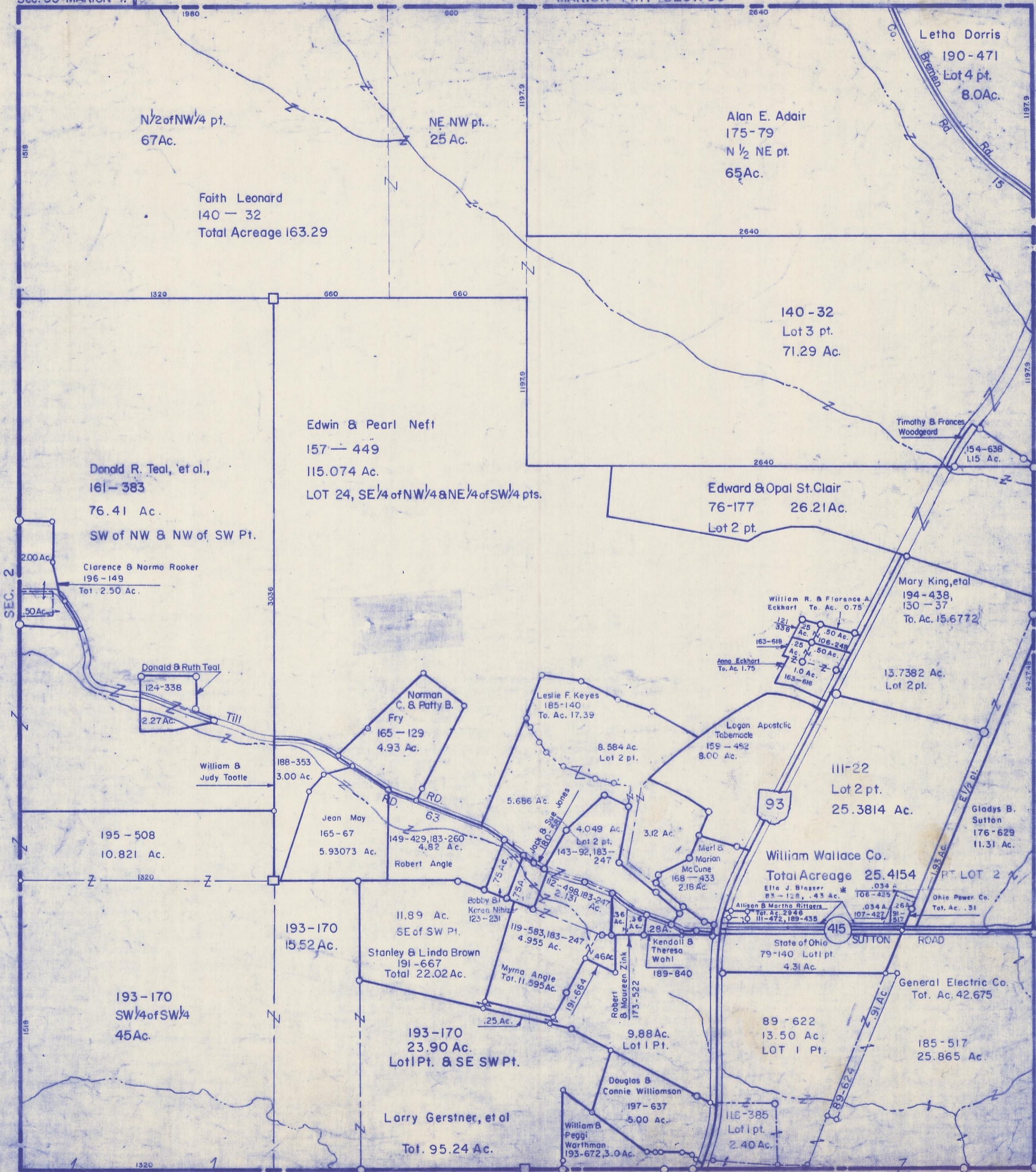
SCALE: 1" = 400'

HOCKING COUNTY

FALLS TWP. SEC. 1 T14 R17

Sec. 35 MARION T.

MARION TWP. SEC. 36



N/2 of NW/4 pt.
67Ac.

Faith Leonard
140 - 32
Total Acreage 163.29

NE NW pt.
25 Ac.

Alan E. Adair
175-79
N 1/2 NE pt.
65Ac.

Letha Dorris
190-471
Lot 4 pt.
8.0Ac.

140-32
Lot 3 pt.
71.29 Ac.

Edwin & Pearl Neft
157 - 449

115.074 Ac.
LOT 24, SE 1/4 of NW 1/4 & NE 1/4 of SW 1/4 pts.

Edward & Opal St. Clair
76-177 26.21Ac.
Lot 2 pt.

Donald R. Teal, et al.,
161 - 383
76.41 Ac.

SW of NW & NW of SW Pt.

Clarence & Norma Rooker
196-149
Tot. 2.50 Ac.

Donald & Ruth Teal
124-338
2.27Ac.

William & Judy Tootle
188-353
3.00 Ac.

Jean May
165-67
5.93073 Ac.

195-508
10.821 Ac.

Norman
C. & Patty B.
Fry
165-129
4.93 Ac.

Leslie F. Keyes
185-140
To. Ac. 17.39

8.584 Ac.
Lot 2 pt.

Legon Apostolic
Tabernacle
159-452
8.00 Ac.

111-22
Lot 2 pt.
25.3814 Ac.

Gladys B.
Sutton
176-629
11.31 Ac.

William Wallace Co.
Total Acreage 25.4154

193-170
15.52 Ac.

11.89 Ac.
SE of SW Pt.
Stanley & Linda Brown
191-667
Total 22.02 Ac.

Myrna Angle
Tot. 11.595 Ac.

193-170
23.90 Ac.
Lot 1 Pt. & SE SW Pt.

Larry Gerstner, et al
Tot. 95.24 Ac.

Douglas & Connie Williamson
197-637
5.00 Ac.

William & Peggi
Worthman
193-672, 3.0 Ac.

89-622
13.50 Ac.
LOT 1 Pt.

General Electric Co.
Tot. Ac. 42.675

185-517
25.865 Ac.

SEC. 12

SEC. 1

GREEN TWP. SEC. 36