

HOCKING COUNTY

Sec. 16 T 14 R 17

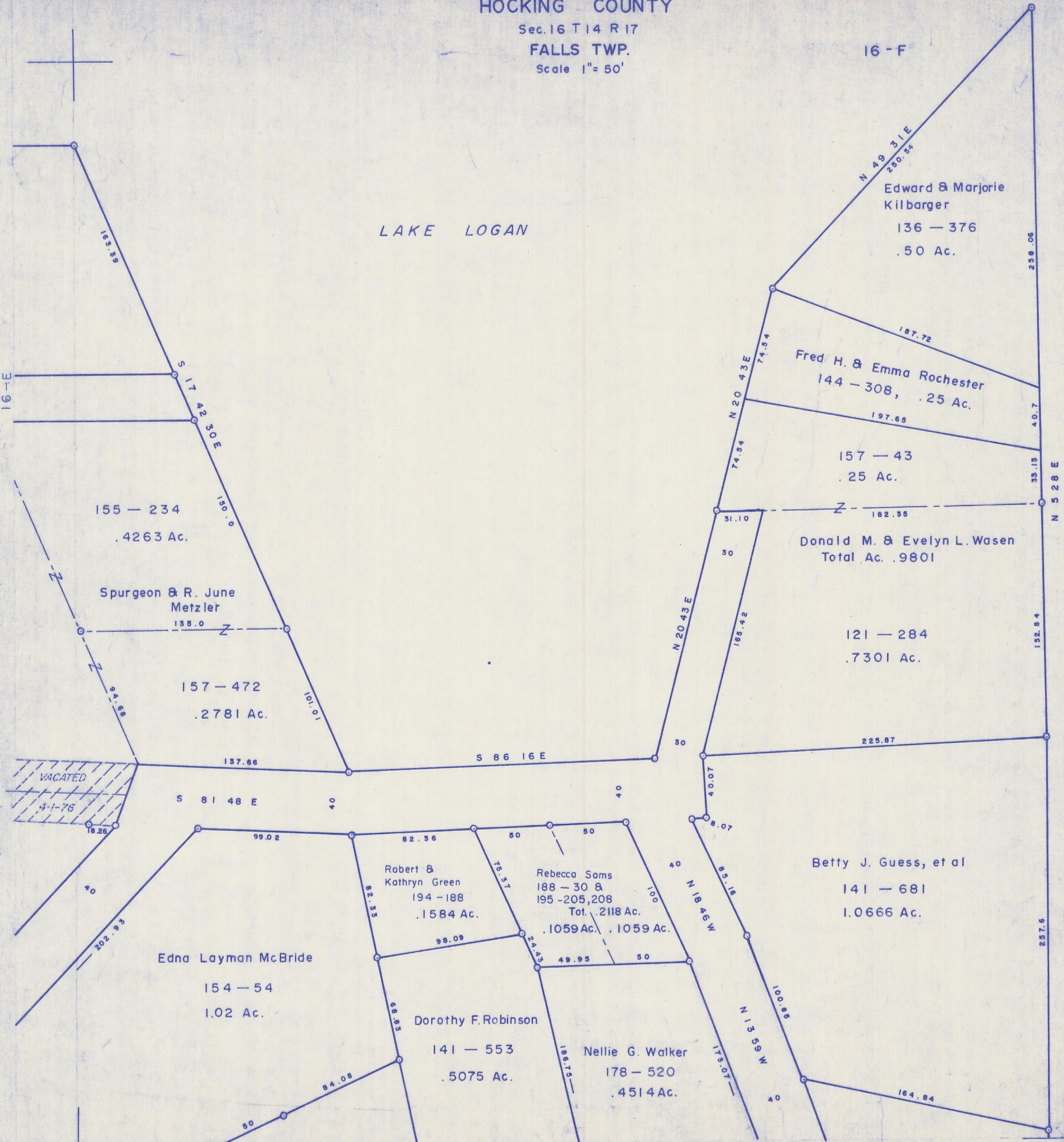
FALLS TWP.

Scale 1" = 50'

16 - F

LAKE LOGAN

16 - E



155 - 234
.4263 Ac.

Spurgeon & R. June Metzler

157 - 472
.2781 Ac.

Edward & Marjorie Kilbarger
136 - 376
.50 Ac.

Fred H. & Emma Rochester
144 - 308, .25 Ac.

157 - 43
.25 Ac.

Donald M. & Evelyn L. Wasen
Total Ac. .9801

121 - 284
.7301 Ac.

Betty J. Guess, et al
141 - 681
1.0666 Ac.

Edna Layman McBride
154 - 54
1.02 Ac.

Robert & Kathryn Green
194 - 188
.1584 Ac.

Rebecca Sams
188 - 30 &
195 - 205, 208
Tot. .2118 Ac.
.1059 Ac. .1059 Ac.

Dorothy F. Robinson
141 - 553
.5075 Ac.

Nellie G. Walker
178 - 520
.4514 Ac.

HILDEBRANDT ALL.

16 - F