

HOCKING COUNTY

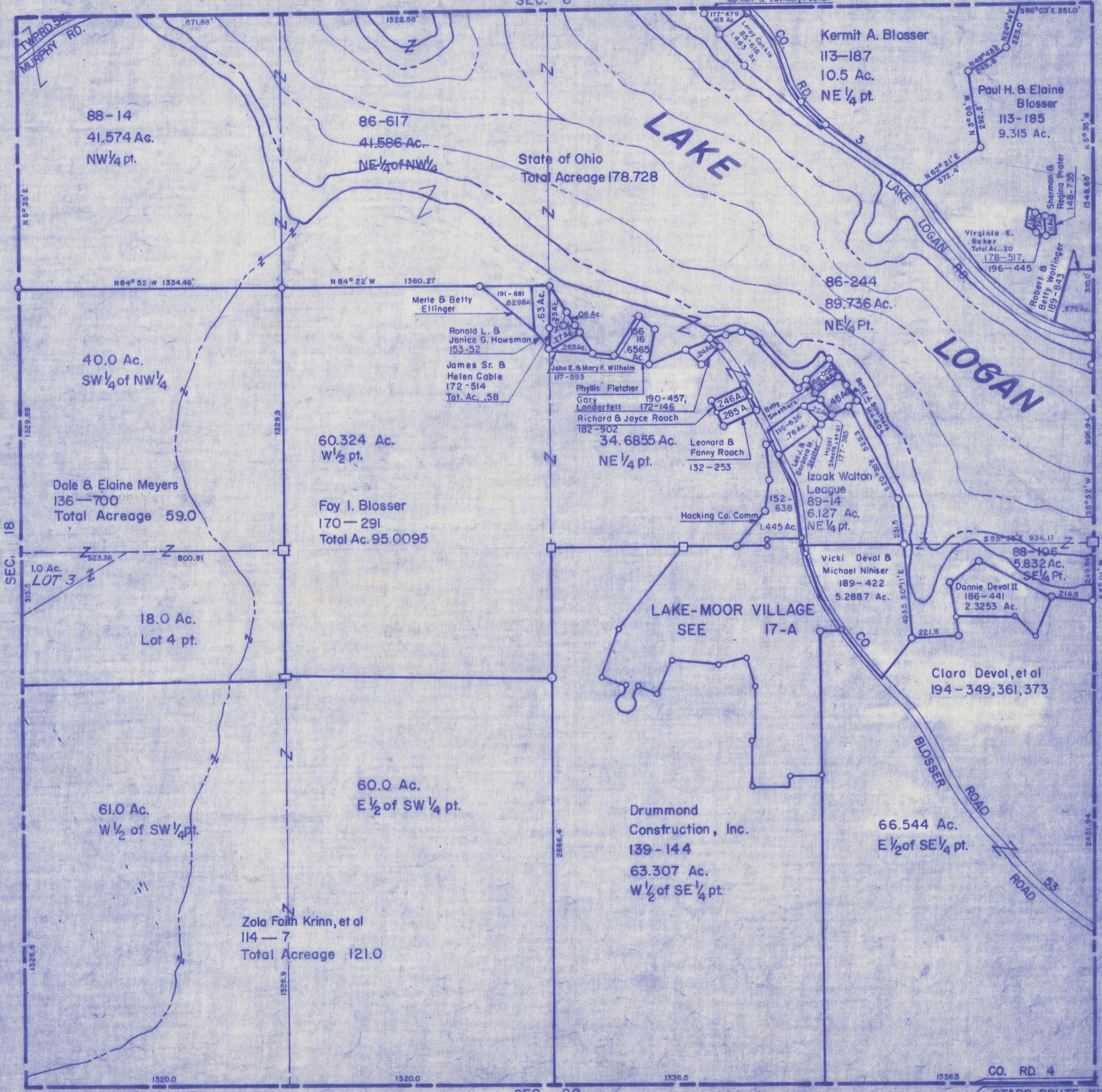
Sec. 17 T14 R17

FALLS TWP.

Scale 1" = 400'

SEC. 8

Norman B. Gwendolyn Bolton



88-14
41.574 Ac.
NW 1/4 pt.

86-617
41.586 Ac.
NE 1/4 of NW 1/4

State of Ohio
Total Acreage 178.728

Kermit A. Blosser
113-187
10.5 Ac.
NE 1/4 pt.

Paul H. & Elaine Blosser
113-185
9.315 Ac.

Virginia E. Baker
Total Ac. 20
178-517
196-445

Sherman & Regina Prater
148-735
Robert & Betty Wolfinger
189-893
.875 Ac.

40.0 Ac.
SW 1/4 of NW 1/4

Merle & Betty Ellinger
191-681
6298A

Ronald L. & Janice G. Hawsman
153-52

James Sr. & Helen Cable
172-514
Tot. Ac. .58

John E. & Mary F. Wilhelm
117-893

Phyllis Fletcher
Gary Landertelt
190-457,
172-146
Richard & Joyce Roach
182-902

34.6855 Ac.
NE 1/4 pt.

246A
285 A

Leonard & Fanny Roach
132-253

Betty Smeethers
116-636
.76 Ac.

152-638
Hocking Co. Comm
1.445 Ac.

Izaak Walton League
89-14
6.127 Ac.
NE 1/4 pt.

Dale & Elaine Meyers
136-700
Total Acreage 59.0

60.324 Ac.
W 1/2 pt.

Foy I. Blosser
170-291
Total Ac. 95.0095

1.0 Ac.
LOT 3

18.0 Ac.
Lot 4 pt.

LAKE-MOOR VILLAGE
SEE 17-A

Vicki Devol & Michael Nihiser
189-422
5.2887 Ac.

88-106
5.832 Ac.
SE 1/4 Pt.

Donnie Devol II
186-441
2.3253 Ac.

61.0 Ac.
W 1/2 of SW 1/4 pt.

60.0 Ac.
E 1/2 of SW 1/4 pt.

Drummond Construction, Inc.
139-144
63.307 Ac.
W 1/2 of SE 1/4 pt.

Clara Devol, et al
194-349, 361, 373

66.544 Ac.
E 1/2 of SE 1/4 pt.

Zola Faith Krinn, et al
114-7
Total Acreage 121.0

SEC. 20

SEC. 17

CO. RD. 4

STARR ROUTE RD.