

HOCKING COUNTY

Sec. 18 T.14 R.17.

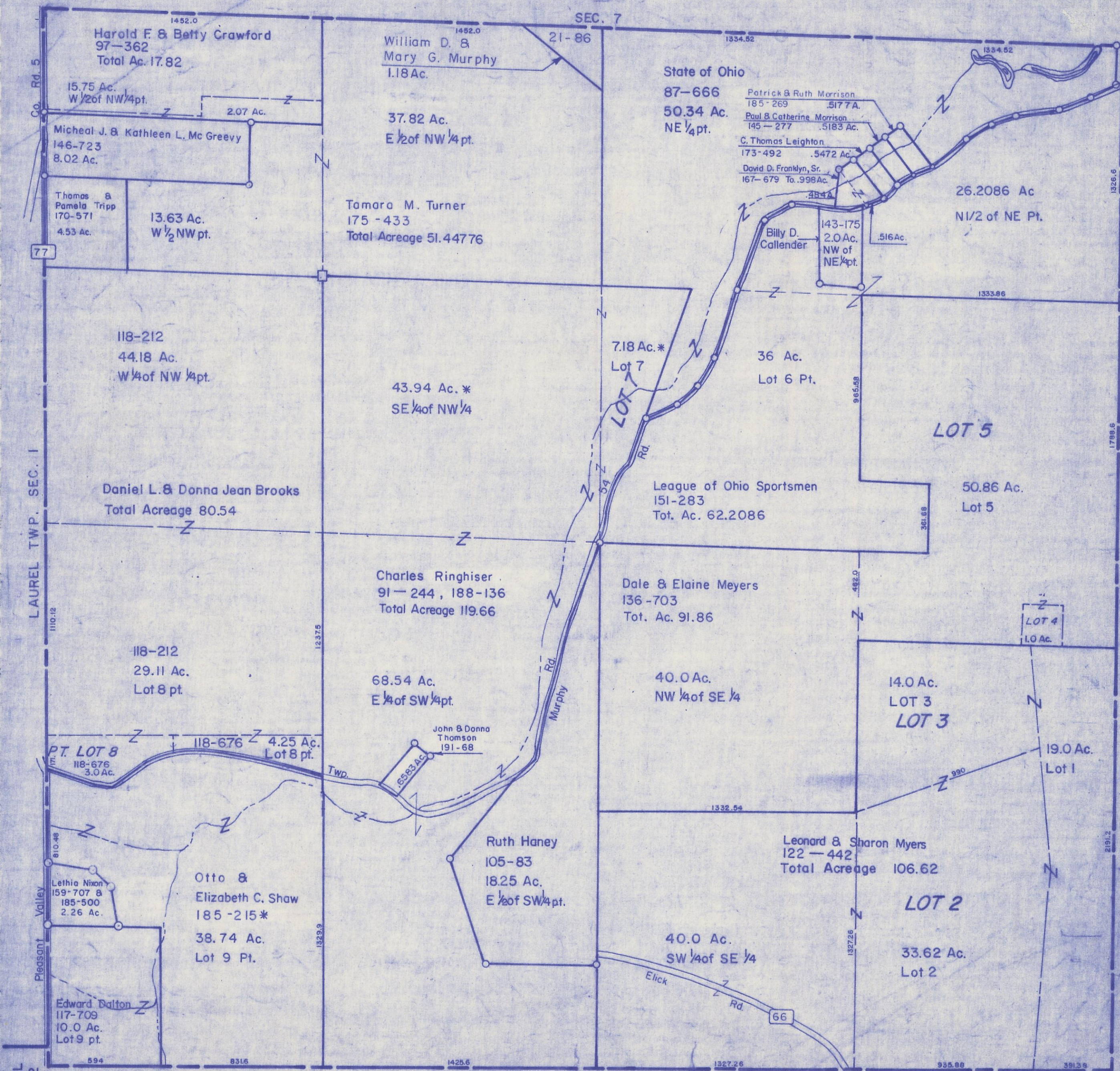
FALLS TWP.

Scale 1"=400'

SEC. 7

SEC. 19

SEC. 18



Harold F. & Betty Crawford
97-362
Total Ac. 17.82

William D. &
Mary G. Murphy
1.18 Ac.

State of Ohio
87-666
50.34 Ac.
NE 1/4 pt.

Patrick & Ruth Morrison
185-269 .5177 A.
Paul & Catherine Morrison
145-277 .5183 Ac.

C. Thomas Leighton
173-492 .5472 Ac.

David D. Franklyn, Sr.
167-679 To .998 Ac.

Billy D. Callender
143-175
2.0 Ac.
NW of NE 1/4 pt.

26.2086 Ac
NI/2 of NE Pt.

15.75 Ac.
W 1/2 of NW 1/4 pt.

2.07 Ac.

Micheal J. & Kathleen L. Mc Greevy
146-723
8.02 Ac.

Thomas &
Pamela Tripp
170-571
4.53 Ac.

13.63 Ac.
W 1/2 NW pt.

37.82 Ac.
E 1/2 of NW 1/4 pt.

Tamara M. Turner
175-433
Total Acreage 51.44776

118-212
44.18 Ac.
W 1/4 of NW 1/4 pt.

43.94 Ac. *
SE 1/4 of NW 1/4

7.18 Ac. *
Lot 7

36 Ac.
Lot 6 Pt.

LOT 5

Daniel L. & Donna Jean Brooks
Total Acreage 80.54

League of Ohio Sportsmen
151-283
Tot. Ac. 62.2086

50.86 Ac.
Lot 5

Charles Ringhiser
91-244, 188-136
Total Acreage 119.66

Dale & Elaine Meyers
136-703
Tot. Ac. 91.86

118-212
29.11 Ac.
Lot 8 pt.

68.54 Ac.
E 1/4 of SW 1/4 pt.

40.0 Ac.
NW 1/4 of SE 1/4

14.0 Ac.
LOT 3
LOT 3

PT. LOT 8
118-676
3.0 Ac.

118-676
4.25 Ac.
Lot 8 pt.

John & Donna
Thomson
191-68
1.5583 Ac.

40.0 Ac.
SW 1/4 of SE 1/4

19.0 Ac.
Lot 1

Lethia Nixon
159-707 &
185-500
2.26 Ac.

Otto &
Elizabeth C. Shaw
185-215*
38.74 Ac.
Lot 9 Pt.

Ruth Haney
105-83
18.25 Ac.
E 1/2 of SW 1/4 pt.

Leonard & Sharon Myers
122-442
Total Acreage 106.62

LOT 2

33.62 Ac.
Lot 2

Edward Dalton
117-709
10.0 Ac.
Lot 9 pt.

40.0 Ac.
SW 1/4 of SE 1/4

LAUREL
Sec. 12

LAUREL TWP. SEC. 1

SEC. 17