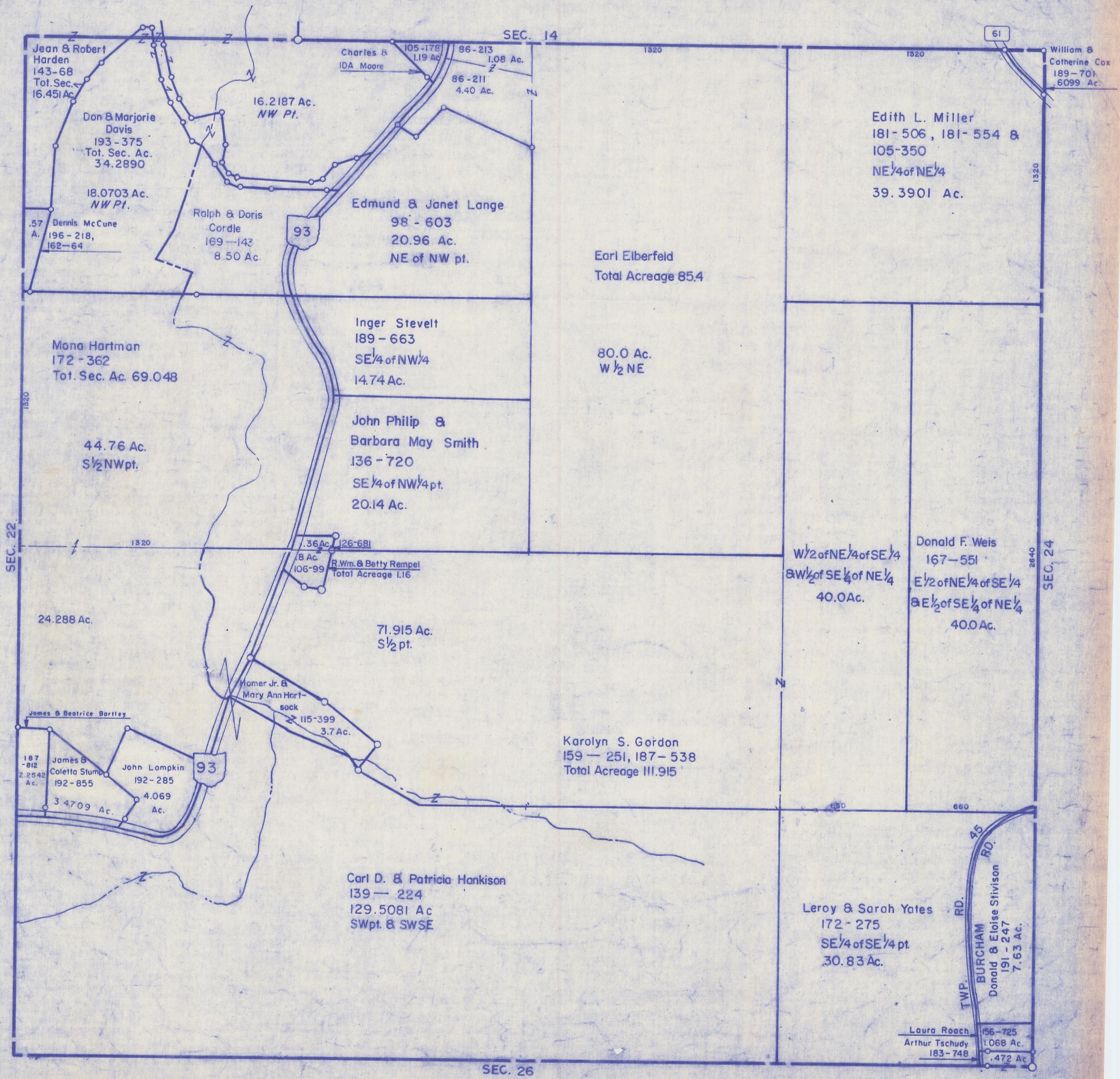


HOCKING COUNTY

Sec 23 T14 R17

FALLS TWP.

Scale 1" = 400'



Jean & Robert Harden
143-68
Tot. Sec. Ac.
16.451 Ac.

Don & Marjorie Davis
193-375
Tot. Sec. Ac.
34.2890

18.0703 Ac.
NW Pt.

.57 Dennis McCune
A. 196-218,
162-64

Ralph & Doris Cordle
169-143
8.50 Ac.

Charles & IDA Moore
105-178
1.19 Ac.

86-213
1.08 Ac.
86-211
4.40 Ac.

16.2187 Ac.
NW Pt.

Edmund & Janet Lange
98-603
20.96 Ac.
NE of NW pt.

Edith L. Miller
181-506, 181-554 &
105-350
NE 1/4 of NE 1/4
39.3901 Ac.

William & Catherine Cox
189-701
6099 Ac.

Mona Hartman
172-362
Tot. Sec. Ac. 69.048

Inger Stevelt
189-663
SE 1/4 of NW 1/4
14.74 Ac.

Earl Elberfeld
Total Acreage 85.4

80.0 Ac.
W 1/2 NE

44.76 Ac.
S 1/2 NW pt.

John Philip & Barbara May Smith
136-720
SE 1/4 of NW 1/4 pt.
20.14 Ac.

.36 Ac. 126-681
8 Ac. 106-99
R. Wm. & Betty Rempel
Total Acreage 1.16

W 1/2 of NE 1/4 of SE 1/4
& W 1/2 of SE 1/4 of NE 1/4
40.0 Ac.

Donald F. Weis
167-551
E 1/2 of NE 1/4 of SE 1/4
& E 1/2 of SE 1/4 of NE 1/4
40.0 Ac.

24.288 Ac.

71.915 Ac.
S 1/2 pt.

Karolyn S. Gordon
159-251, 187-538
Total Acreage 111.915

James & Beatrice Bartley

187-812
2.2542 Ac.

James & Coletta Stump
192-855

John Lumpkin
192-285
4.069 Ac.

Homer Jr. & Mary Ann Hartsock
115-399
3.7 Ac.

Carl D. & Patricia Hankison
139-224
129.5081 Ac
SW pt. & SWSE

Leroy & Sarah Yates
172-275
SE 1/4 of SE 1/4 pt.
30.83 Ac.

Laura Roach 156-725
Arthur Tschudy 1.068 Ac.
183-748
.472 Ac.

RD. 45
BURCHAM
TWP.
Donald & Eloise Stivison
191-247
7.63 Ac.

SEC. 26

SEC. 23