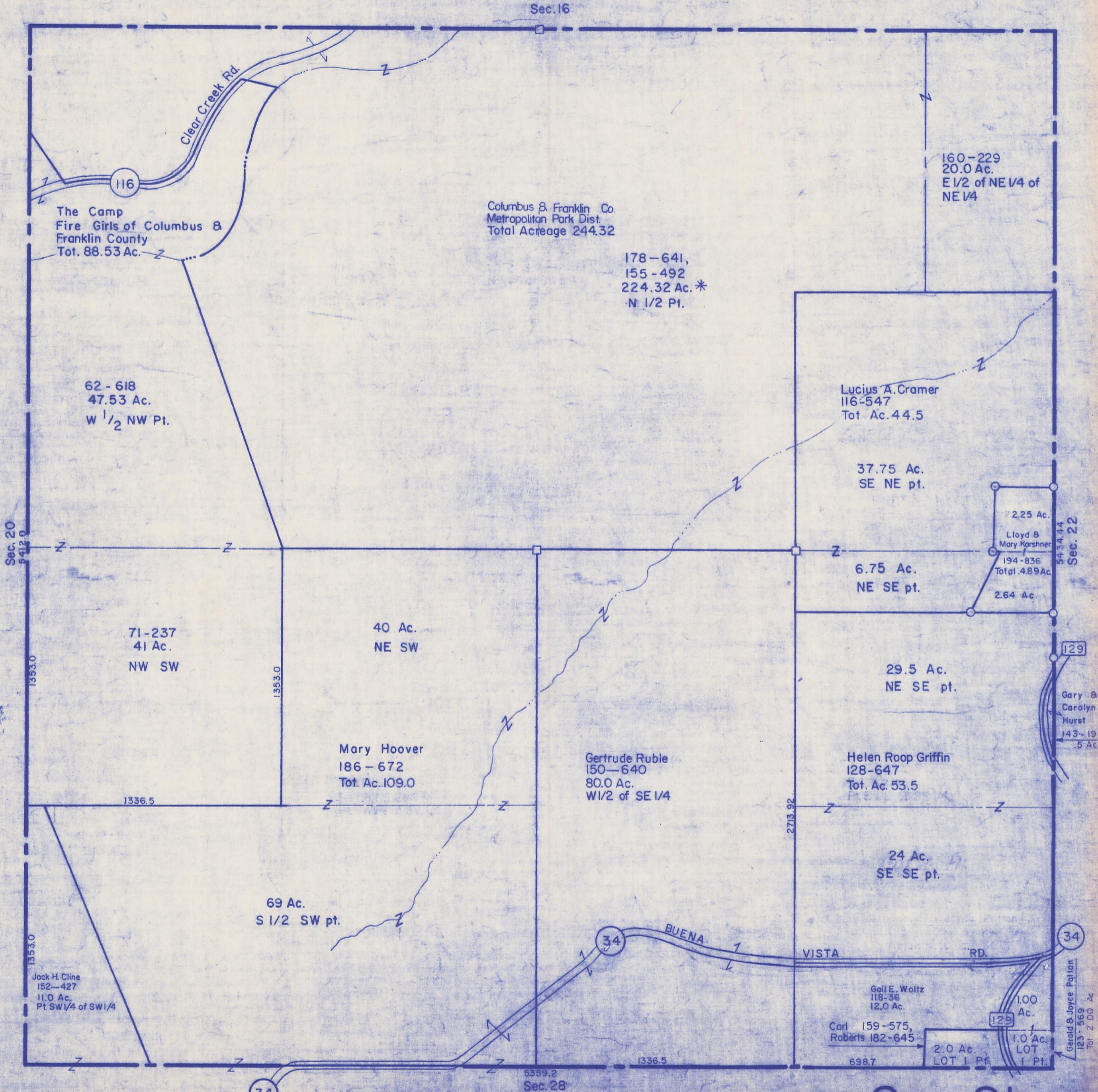


HOCKING COUNTY

Sec. 21 T13 R18
GOOD HOPE TWP.
Scale=1"=400'



The Camp
Fire Girls of Columbus &
Franklin County
Tot. 88.53 Ac.

Columbus & Franklin Co.
Metropolitan Park Dist.
Total Acreage 244.32

178-641,
155-492
224.32 Ac. *
N 1/2 Pt.

160-229
20.0 Ac.
E 1/2 of NE 1/4 of
NE 1/4

62-618
47.53 Ac.
W 1/2 NW Pt.

Lucius A. Cramer
116-547
Tot. Ac. 44.5

37.75 Ac.
SE NE pt.

2.25 Ac.
Lloyd &
Mary Korshner
194-836
Total 4.89 Ac.
2.64 Ac.

6.75 Ac.
NE SE pt.

71-237
41 Ac.
NW SW

40 Ac.
NE SW

Mary Hoover
186-672
Tot. Ac. 109.0

Gertrude Ruble
150-640
80.0 Ac.
W 1/2 of SE 1/4

29.5 Ac.
NE SE pt.

Gary &
Carolyn
Hurst
143-19
.5 Ac

Helen Roop Griffin
128-647
Tot. Ac. 53.5

24 Ac.
SE SE pt.

69 Ac.
S 1/2 SW pt.

Jack H. Cline
152-427
11.0 Ac.
Pt. SW 1/4 of SW 1/4

Gail E. Woltz
118-36
12.0 Ac.
Carl 159-575,
Roberts 182-645

Gerald & Joyce Patton
123-569
Tot. 2.00 Ac

1.00 Ac.
LOT 1 Pt.
2.0 Ac.
LOT 1 Pt.
1.0 Ac.
LOT 1 Pt.

Sec. 21