

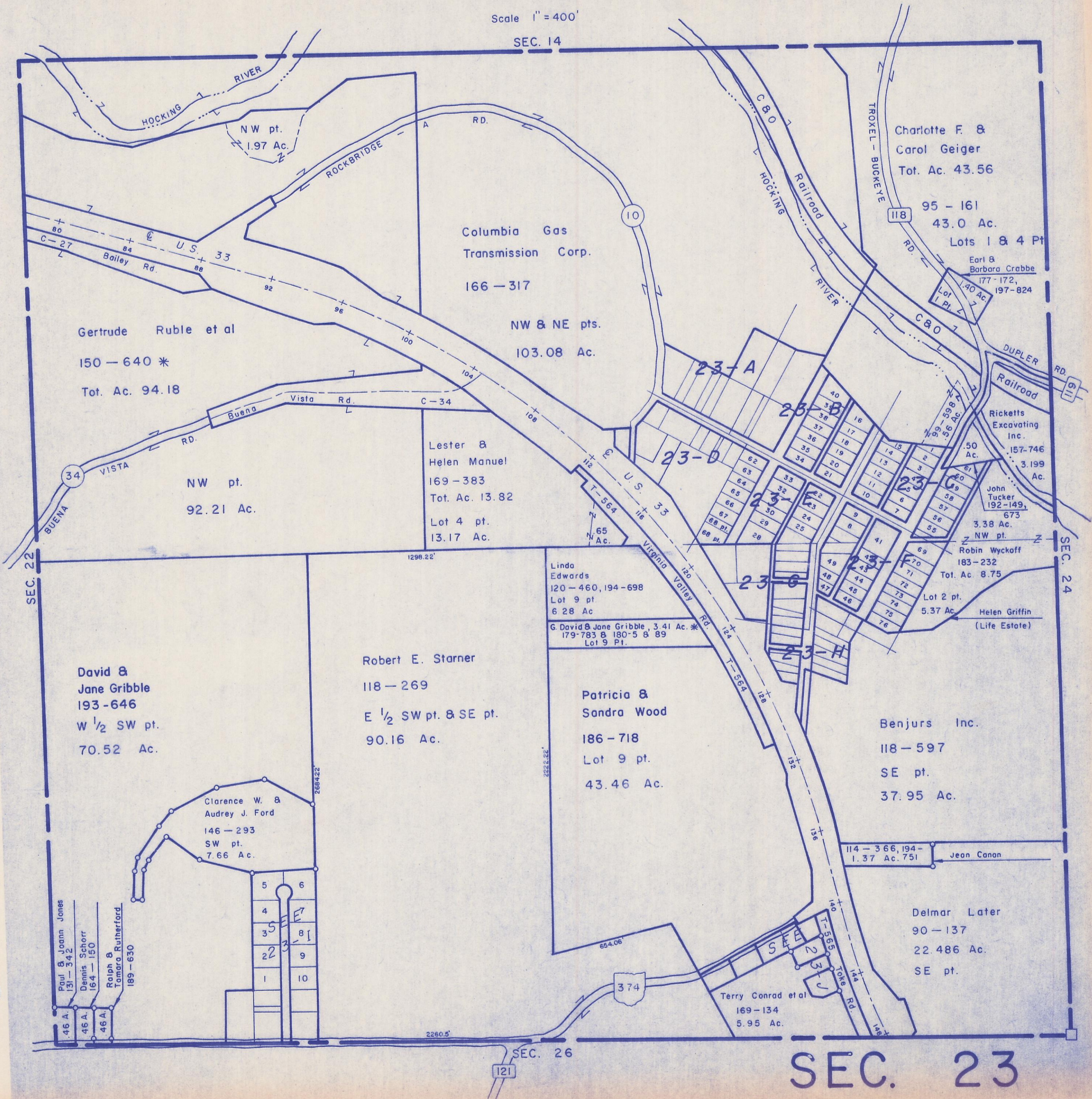
HOCKING COUNTY

GOOD HOPE

SEC. 23 T 13 R 18

Scale 1" = 400'

SEC. 14



NW pt.  
1.97 Ac.

Columbia Gas  
Transmission Corp.  
166-317

Gertrude Ruble et al  
150-640 \*  
Tot. Ac. 94.18

NW & NE pts.  
103.08 Ac.

NW pt.  
92.21 Ac.

Lester &  
Helen Manuel  
169-383  
Tot. Ac. 13.82  
Lot 4 pt.  
13.17 Ac.

Linda  
Edwards  
120-460, 194-698  
Lot 9 pt.  
6.28 Ac.  
G. David & Jane Gribble, 3.41 Ac. \*  
179-783 & 180-5 & 89  
Lot 9 Pt.

David &  
Jane Gribble  
193-646  
W 1/2 SW pt.  
70.52 Ac.

Robert E. Starner  
118-269  
E 1/2 SW pt. & SE pt.  
90.16 Ac.

Patricia &  
Sandra Wood  
186-718  
Lot 9 pt.  
43.46 Ac.

Benjurs Inc.  
118-597  
SE pt.  
37.95 Ac.

Clarence W. &  
Audrey J. Ford  
146-293  
SW pt.  
7.66 Ac.

114-366, 194-  
1.37 Ac. 751  
Jean Canon

Paul & Joann Jones  
131-342  
46 A.  
Dennis Schorr  
164-150  
46 A.  
Rolph &  
Tomara Rutherford  
189-630  
46 A.

5  
6  
4  
3  
2  
1  
8  
9  
10

Terry Conrad et al  
169-134  
5.95 Ac.

Delmar Later  
90-137  
22.486 Ac.  
SE pt.

SEC. 26

SEC. 23