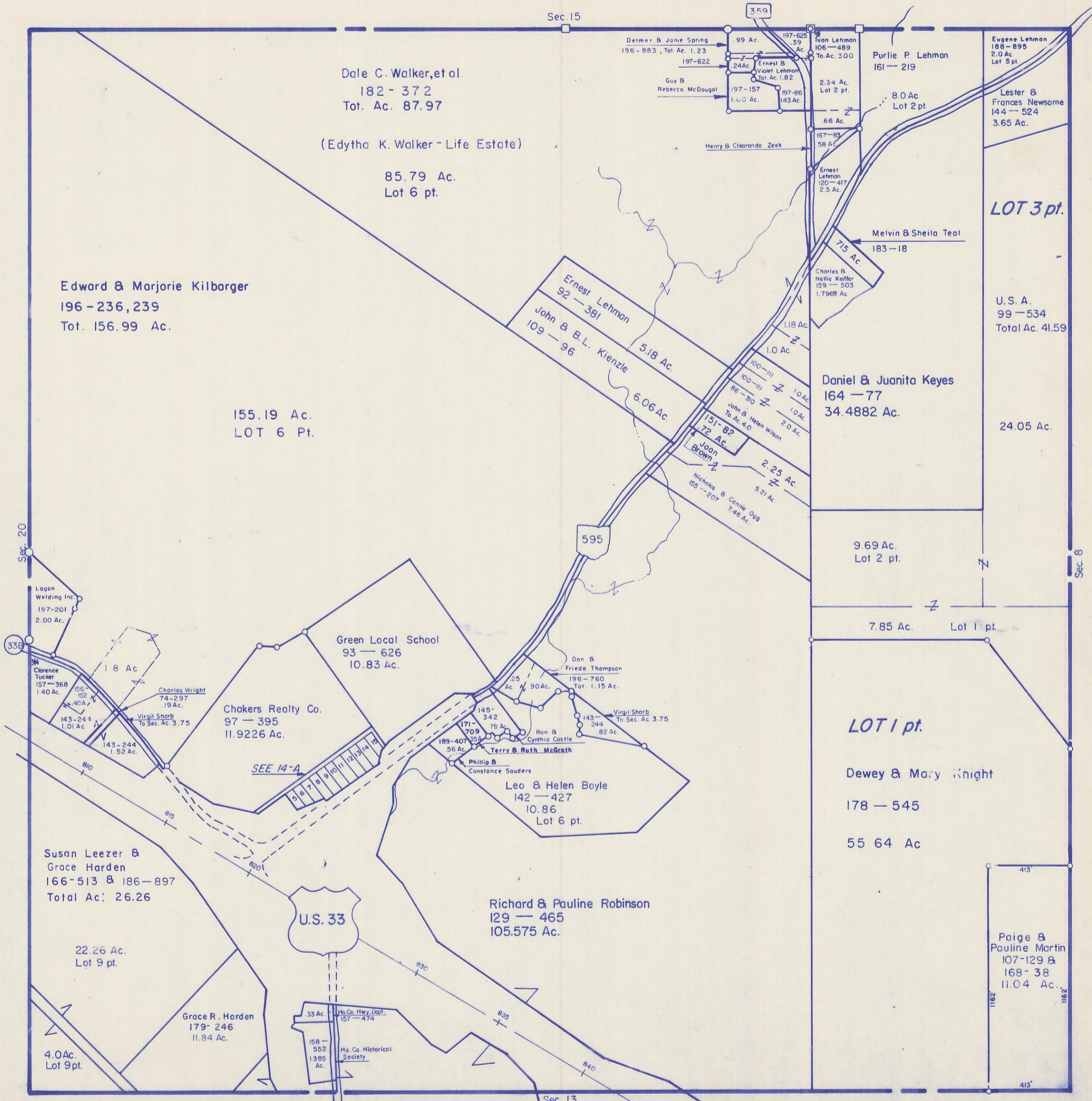


HOCKING COUNTY

GREEN TWP.

SEC. 14 T 13 R 16

Scale 1" = 400'



Dale C. Walker, et al  
 182 - 372  
 Tot. Ac. 87.97  
 (Edytha K. Walker - Life Estate)

85.79 Ac.  
 Lot 6 pt.

Edward & Marjorie Kilbarger  
 196 - 236, 239  
 Tot. 156.99 Ac.

155.19 Ac.  
 LOT 6 Pt.

Green Local School  
 93 - 626  
 10.83 Ac.

Chokers Realty Co.  
 97 - 395  
 11.9226 Ac.

Susan Leezer &  
 Grace Harden  
 166-513 & 186-897  
 Total Ac: 26.26

22.26 Ac.  
 Lot 9 pt.

Grace R. Harden  
 179-246  
 11.84 Ac.

4.0 Ac.  
 Lot 9 pt.

U.S. 33

Richard & Pauline Robinson  
 129 - 465  
 105.575 Ac.

Leo & Helen Boyle  
 142 - 427  
 10.86  
 Lot 6 pt.

Terry & Ruth McGrath  
 189-407  
 56 Ac.

Phillip &  
 Constance Souders

Don &  
 Frieda Thompson  
 196-760  
 Tot. 1.15 Ac.

Ron &  
 Cynthia Castle

Virgil Shorb  
 To Sec. Ac. 3.75

33 Ac.  
 Ho. Co. Hwy. Dept.  
 157-474

158-552  
 1385 Ac.  
 Ho. Co. Historical Society

Delmer & Janie Spring  
 196-883, Tot. Ac. 1.23  
 197-622  
 Guy &  
 Rebecca McDougol  
 197-157  
 1.00 Ac.

Ernest &  
 Violet Lehman  
 Tot. Ac. 1.82  
 197-86  
 143 Ac.

Ivon Lehman  
 106-489  
 Tot. Ac. 3.00  
 2.34 Ac.  
 Lot 2 pt.

Purlie P. Lehman  
 161-219  
 8.0 Ac.  
 Lot 2 pt.

Eugene Lehman  
 188-895  
 2.0 Ac.  
 Lot 5 pt.

Lester &  
 Frances Newsome  
 144-524  
 3.65 Ac.

LOT 3 pt.

U.S. A.  
 99-534  
 Total Ac. 41.59

24.05 Ac.

Daniel & Juanita Keyes  
 164-77  
 34.4882 Ac.

9.69 Ac.  
 Lot 2 pt.

7.85 Ac. Lot 1 pt.

LOT 1 pt.

Dewey & Mary Knight  
 178-545  
 55.64 Ac.

Paige &  
 Pauline Martin  
 107-129 &  
 168-38  
 11.04 Ac.

SEC. 14