

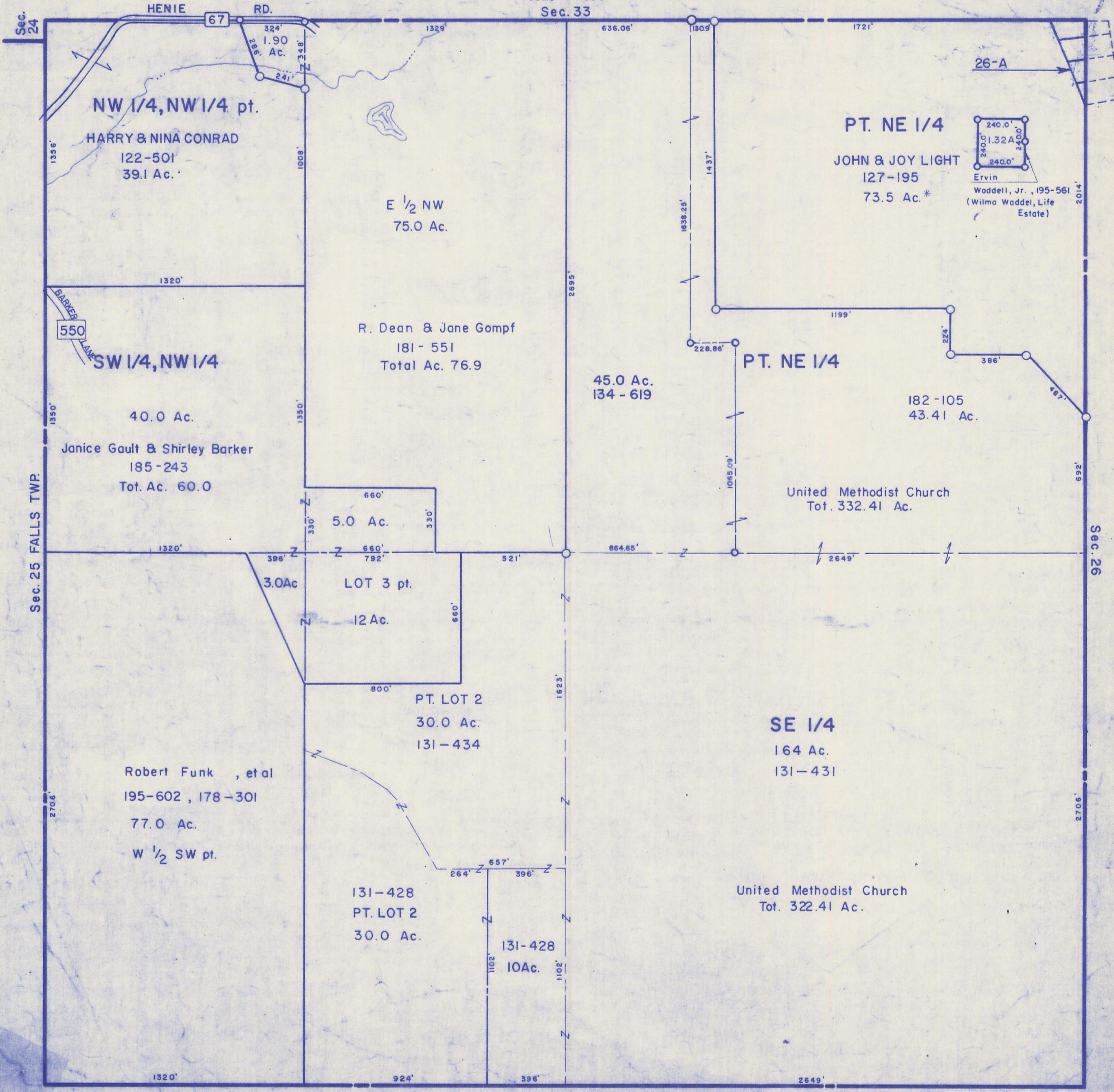
HOCKING COUNTY

Sec. 32 T13 R 16

GREEN TWP

Scale 1"=400'

Sec. 33



NW 1/4, NW 1/4 pt.
 HARRY & NINA CONRAD
 122-501
 39.1 Ac.

E 1/2 NW
 75.0 Ac.

PT. NE 1/4
 JOHN & JOY LIGHT
 127-195
 73.5 Ac.*

BARKER LANE
 550
 SW 1/4, NW 1/4
 40.0 Ac.
 Janice Gault & Shirley Barker
 185-243
 Tot. Ac. 60.0

R. Dean & Jane Gompf
 181-551
 Total Ac. 76.9

PT. NE 1/4

45.0 Ac.
 134-619

182-105
 43.41 Ac.

United Methodist Church
 Tot. 332.41 Ac.

Robert Funk, et al
 195-602, 178-301
 77.0 Ac.
 W 1/2 SW pt.

5.0 Ac.

3.0 Ac.
 LOT 3 pt.
 12 Ac.

PT. LOT 2
 30.0 Ac.
 131-434

SE 1/4
 164 Ac.
 131-431

131-428
 PT. LOT 2
 30.0 Ac.

131-428
 10 Ac.

United Methodist Church
 Tot. 322.41 Ac.

SEC. 32