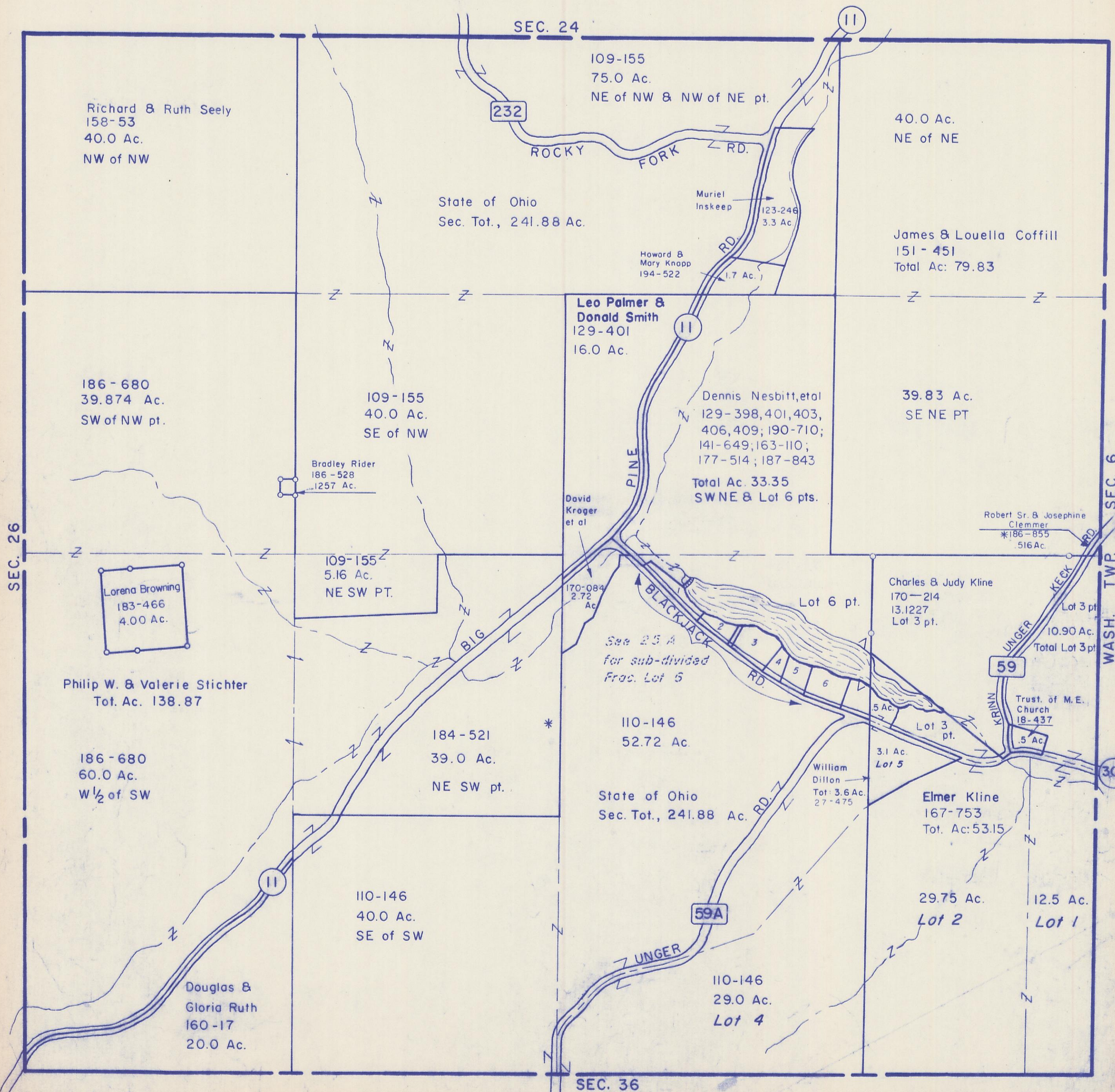


HOCKING COUNTY

LAUREL TWP.

SEC. 25 T 12 R 18

Scale 1"=400'



Richard & Ruth Seely  
158-53  
40.0 Ac.  
NW of NW

109-155  
75.0 Ac.  
NE of NW & NW of NE pt.

State of Ohio  
Sec. Tot., 241.88 Ac.

40.0 Ac.  
NE of NE

James & Louella Coffill  
151-451  
Total Ac: 79.83

Leo Palmer &  
Donald Smith  
129-401  
16.0 Ac.

186-680  
39.874 Ac.  
SW of NW pt.

109-155  
40.0 Ac.  
SE of NW

Dennis Nesbitt, et al  
129-398, 401, 403,  
406, 409; 190-710;  
141-649; 163-110;  
177-514; 187-843  
Total Ac. 33.35  
SWNE & Lot 6 pts.

39.83 Ac.  
SE NE PT

Bradley Rider  
186-528  
1257 Ac.

David  
Kroger  
et al

Robert Sr. & Josephine  
Clemmer  
\*186-855  
516 Ac.

Lorena Browning  
183-466  
4.00 Ac.

109-155  
5.16 Ac.  
NE SW PT.

Charles & Judy Kline  
170-214  
13.1227  
Lot 3 pt.

Philip W. & Valerie Stichter  
Tot. Ac. 138.87

See 25 A  
for sub-divided  
Frac. Lot 5

Lot 6 pt.

Lot 3 pt.  
10.90 Ac.  
Total Lot 3 pt.

186-680  
60.0 Ac.  
W 1/2 of SW

184-521  
39.0 Ac.  
NE SW pt.

110-146  
52.72 Ac.

Trust. of M.E.  
Church  
18-437  
5 Ac.

State of Ohio  
Sec. Tot., 241.88 Ac.

William  
Dillon  
Tot: 3.6 Ac.  
27-475

Elmer Kline  
167-753  
Tot. Ac: 53.15

110-146  
40.0 Ac.  
SE of SW

29.75 Ac.  
Lot 2

12.5 Ac.  
Lot 1

Douglas &  
Gloria Ruth  
160-17  
20.0 Ac.

110-146  
29.0 Ac.  
Lot 4

SEC. 25