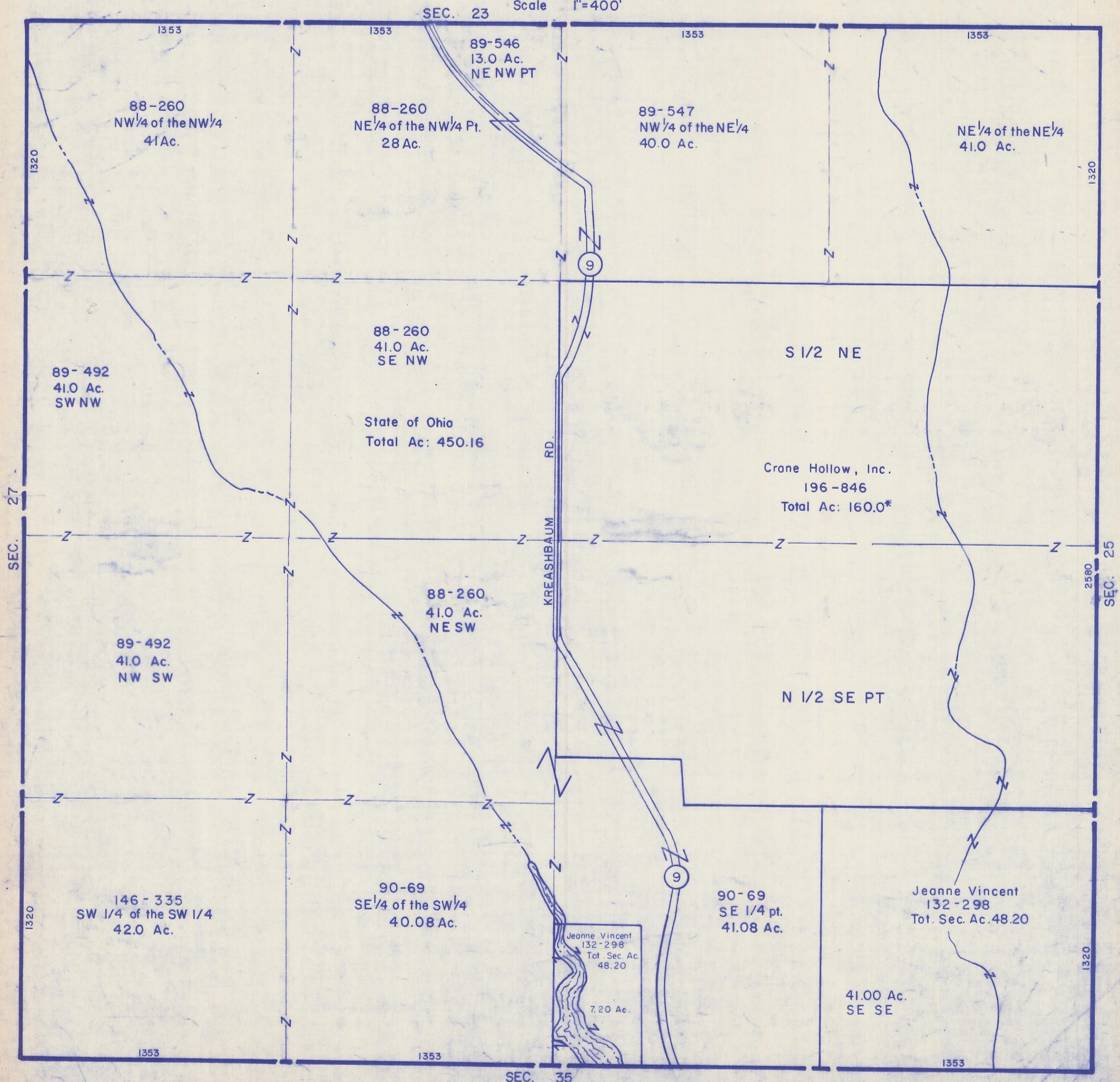


HOCKING COUNTY

Sec.26 T12 R 18

LAUREL TWP.

Scale 1"=400'



SEC. 23

89-546  
13.0 Ac.  
NE NW PT

88-260  
NW 1/4 of the NW 1/4  
41 Ac.

88-260  
NE 1/4 of the NW 1/4 Pt.  
28 Ac.

89-547  
NW 1/4 of the NE 1/4  
40.0 Ac.

NE 1/4 of the NE 1/4  
41.0 Ac.

89-492  
41.0 Ac.  
SW NW

88-260  
41.0 Ac.  
SE NW

S 1/2 NE

State of Ohio  
Total Ac: 450.16

Crane Hollow, Inc.  
196-846  
Total Ac: 160.0\*

88-260  
41.0 Ac.  
NE SW

89-492  
41.0 Ac.  
NW SW

N 1/2 SE PT

146-335  
SW 1/4 of the SW 1/4  
42.0 Ac.

90-69  
SE 1/4 of the SW 1/4  
40.08 Ac.

90-69  
SE 1/4 pt.  
41.08 Ac.

Jeanne Vincent  
132-298  
Tot. Sec. Ac. 48.20

Jeanne Vincent  
132-298  
Tot. Sec. Ac.  
48.20

41.00 Ac.  
SE SE

SEC. 35

SEC. 26