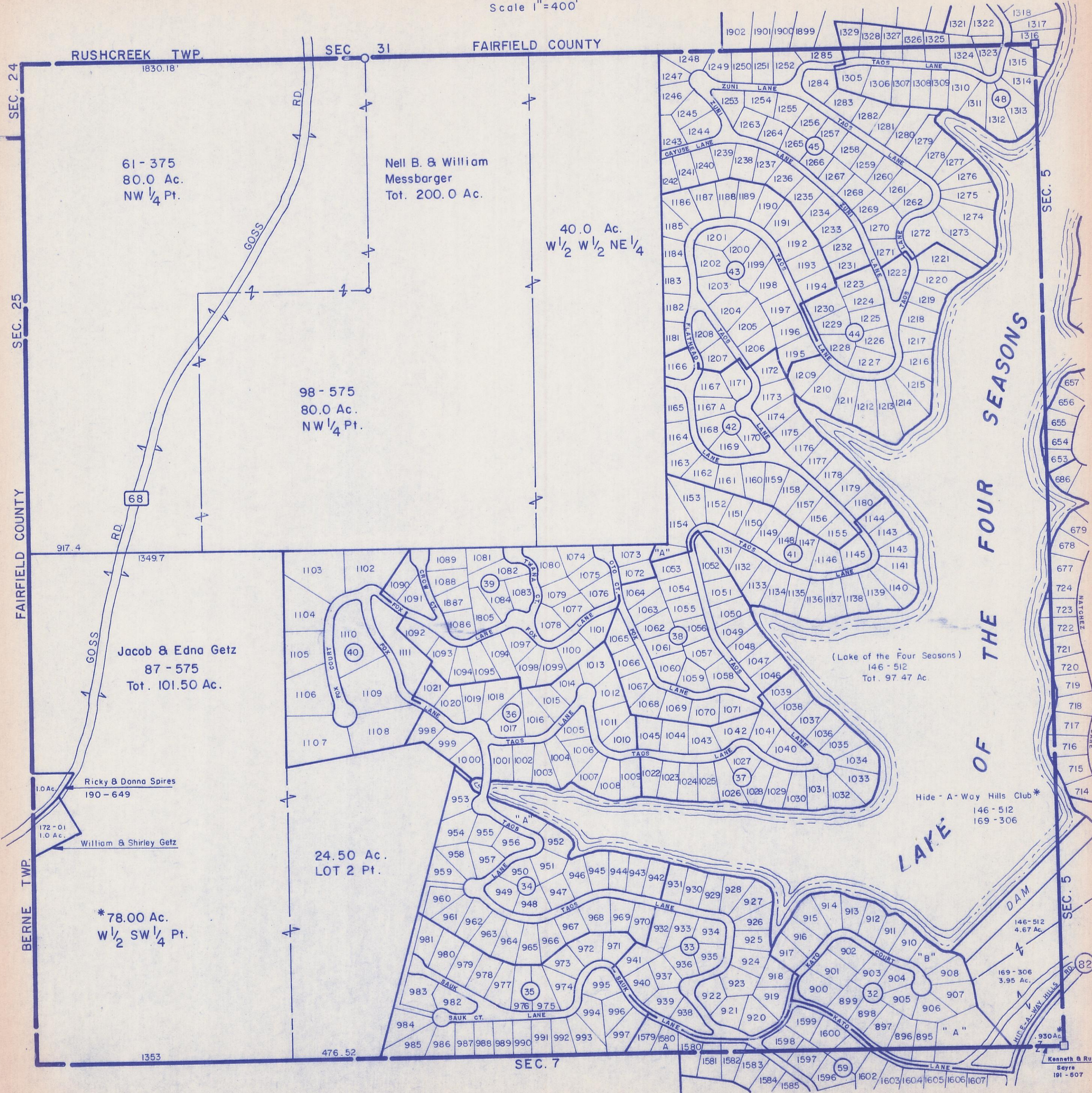


HOCKING COUNTY

MARION TWP.

SEC. 6 T15 R17

Scale 1"=400'



61-375
80.0 Ac.
NW 1/4 Pt.

Nell B. & William
Messbarger
Tot. 200.0 Ac.

40.0 Ac.
W 1/2 W 1/2 NE 1/4

98-575
80.0 Ac.
NW 1/4 Pt.

Jacob & Edna Getz
87-575
Tot. 101.50 Ac.

Ricky & Donna Spires
190-649
1.0 Ac.

William & Shirley Getz
172-01
1.0 Ac.

*78.00 Ac.
W 1/2 SW 1/4 Pt.

24.50 Ac.
LOT 2 Pt.

(Lake of the Four Seasons)
146-512
Tot. 97.47 Ac.

Hide-A-Way Hills Club*
146-512
169-306

146-512
4.67 Ac.

169-306
3.95 Ac.

930 Ac.

Kenneth & Ruth
Sayre
191-607

SEC. 6