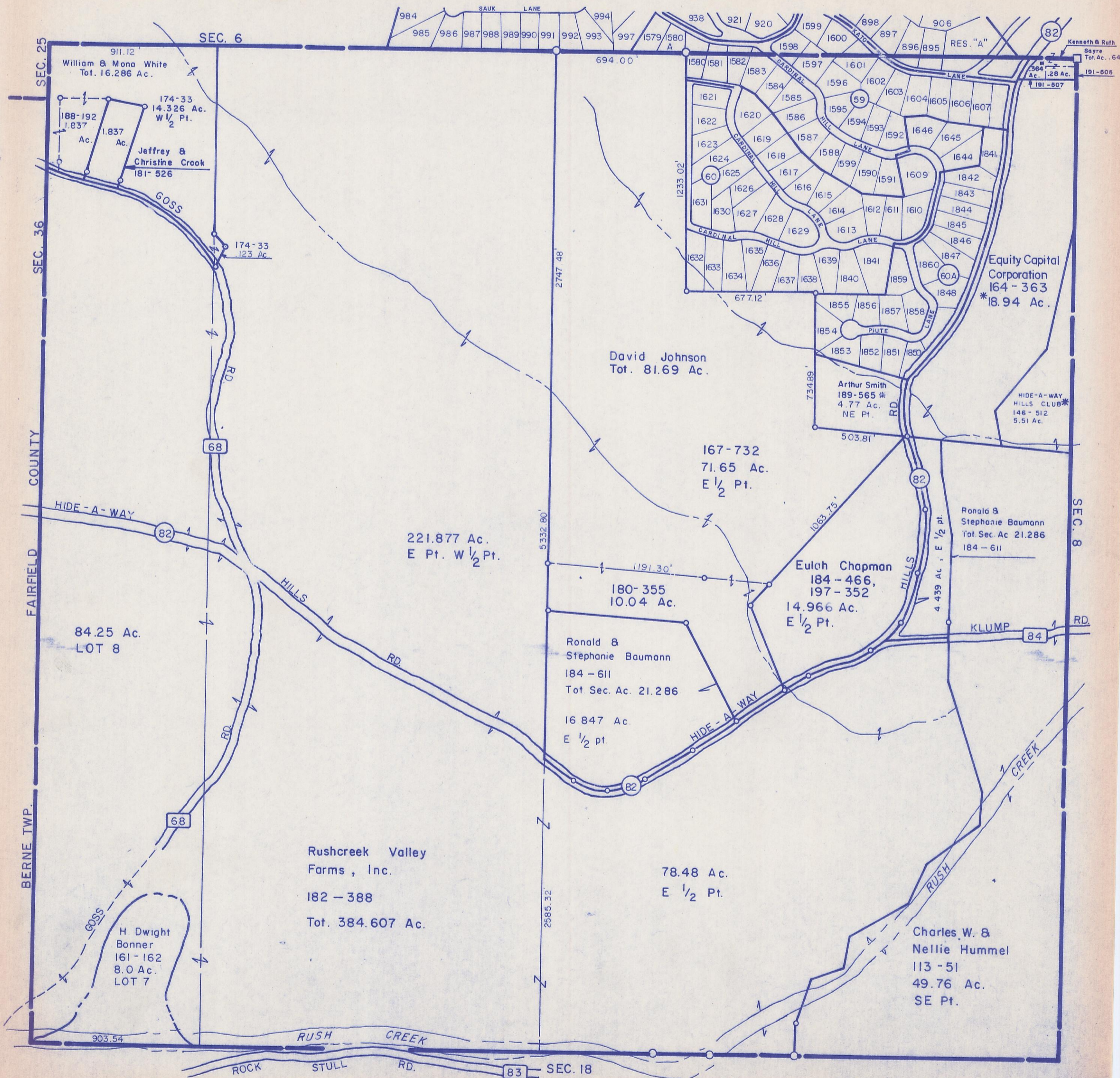


HOCKING COUNTY

MARION TWP.

SEC. 7 T15 R17

Scale 1"=400'



William & Mona White  
Tot. 16.286 Ac.

174-33  
14.326 Ac.  
W 1/2 Pt.  
Jeffrey &  
Christine Crook  
181-526

174-33  
123 Ac.

David Johnson  
Tot. 81.69 Ac.

167-732  
71.65 Ac.  
E 1/2 Pt.

221.877 Ac.  
E Pt. W 1/2 Pt.

180-355  
10.04 Ac.

Ronald &  
Stephanie Baumann  
184-611  
Tot Sec. Ac. 21.286

16 847 Ac.  
E 1/2 pt.

Eulah Chapman  
184-466,  
197-352  
14.966 Ac.  
E 1/2 Pt.

Ronald &  
Stephanie Baumann  
Tot Sec. Ac. 21.286  
184-611

84.25 Ac.  
LOT 8

H. Dwight  
Bonner  
161-162  
8.0 Ac.  
LOT 7

Rushcreek Valley  
Farms, Inc.  
182-388  
Tot. 384.607 Ac.

78.48 Ac.  
E 1/2 Pt.

Charles W. &  
Nellie Hummel  
113-51  
49.76 Ac.  
SE Pt.

Equity Capital  
Corporation  
164-363  
\*18.94 Ac.

HIDE-A-WAY  
HILLS CLUB\*  
146-512  
5.51 Ac.

SEC. 7