

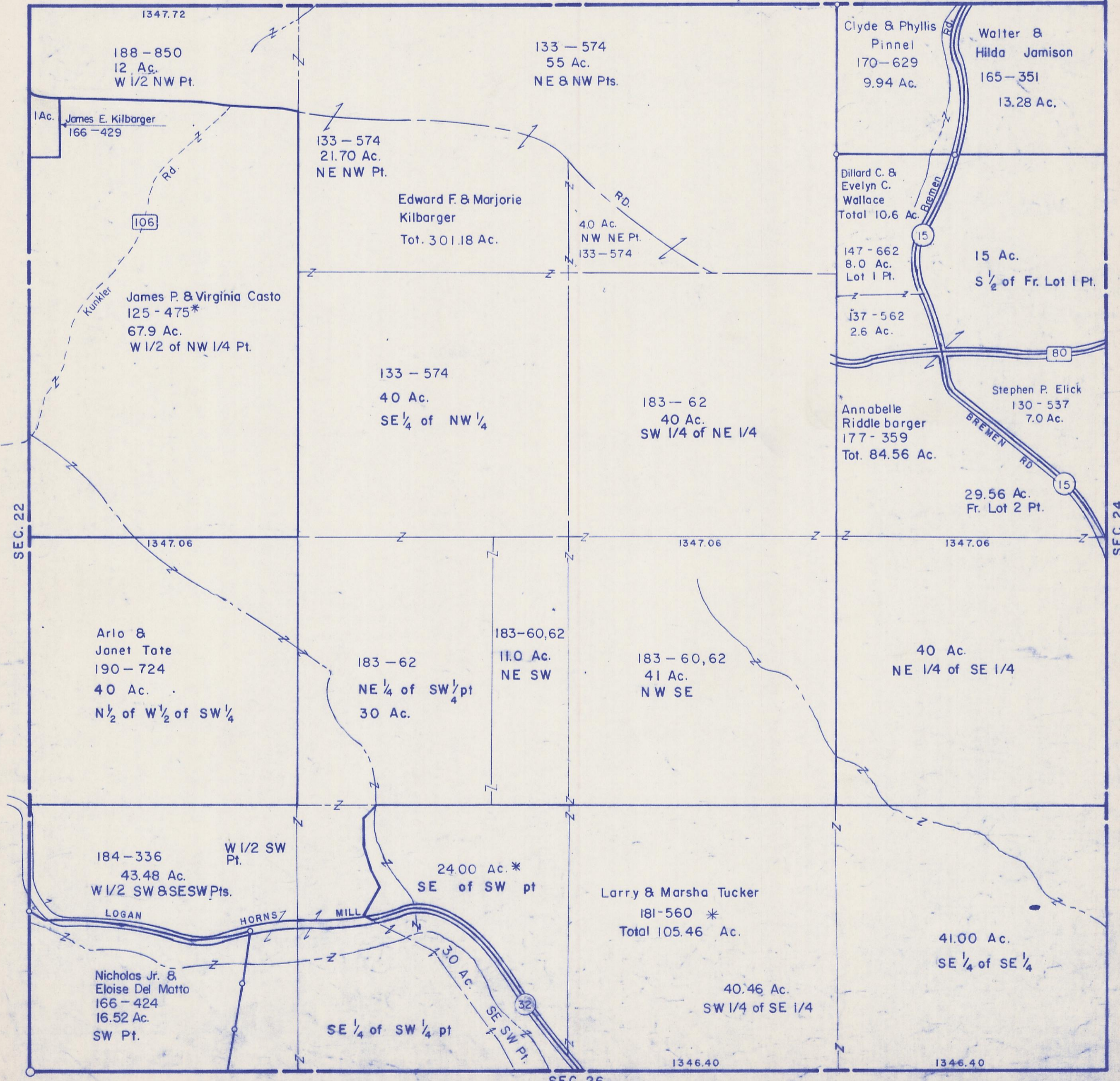
HOCKING COUNTY

SEC. 23 T. 15 R. 17

MARION TWP.

Scale 1" = 400'

SEC. 14



1347.72

188-850
12 Ac.
W 1/2 NW Pt.

1 Ac. James E. Kilbarger
166-429

106

Kunkler Rd.
James P. & Virginia Casto
125-475*
67.9 Ac.
W 1/2 of NW 1/4 Pt.

133-574
21.70 Ac.
NE NW Pt.

Edward F. & Marjorie
Kilbarger
Tot. 301.18 Ac.

133-574
55 Ac.
NE & NW Pts.

40 Ac.
NW NE Pt.
133-574

Clyde & Phyllis
Pinnel
170-629
9.94 Ac.

Walter &
Hilda Jamison
165-351
13.28 Ac.

Dillard C. &
Evelyn C.
Wallace
Total 10.6 Ac.

147-662
8.0 Ac.
Lot 1 Pt.

15 Ac.
S 1/2 of Fr. Lot 1 Pt.

137-562
2.6 Ac.

133-574
40 Ac.
SE 1/4 of NW 1/4

183-62
40 Ac.
SW 1/4 of NE 1/4

Stephen P. Elick
130-537
7.0 Ac.

Annabelle
Riddle barger
177-359
Tot. 84.56 Ac.

29.56 Ac.
Fr. Lot 2 Pt.

SEC. 22

1347.06

1347.06

1347.06

SEC. 24

Arlo &
Janet Tate
190-724
40 Ac.
N 1/2 of W 1/2 of SW 1/4

183-62
NE 1/4 of SW 1/4 pt
30 Ac.

183-60,62
11.0 Ac.
NE SW

183-60,62
41 Ac.
NW SE

40 Ac.
NE 1/4 of SE 1/4

184-336
43.48 Ac.
W 1/2 SW & SE SW Pts.
Pt.

24.00 Ac.*
SE of SW pt

Larry & Marsha Tucker
181-560 *
Total 105.46 Ac.

41.00 Ac.
SE 1/4 of SE 1/4

Nicholas Jr. &
Eloise Del Matto
166-424
16.52 Ac.
SW Pt.

SE 1/4 of SW 1/4 pt

40.46 Ac.
SW 1/4 of SE 1/4

LOGAN

HORNS

MILL

30 Ac.

SE SW Pt.

1346.40

1346.40

SEC 26

SEC 23