

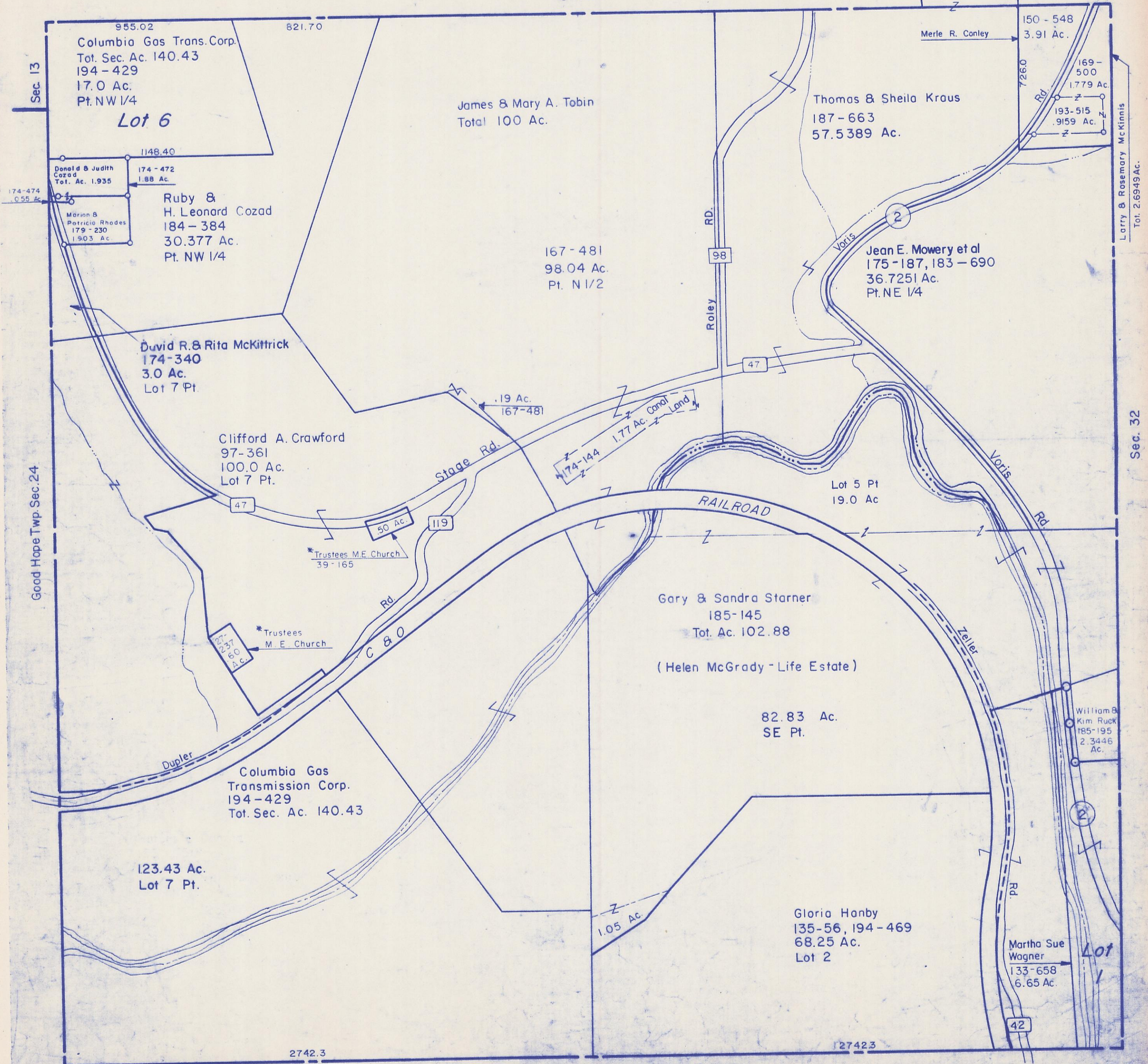
HOCKING COUNTY

Sec. 31 T 15 R 17

MARION TWP.

Scale 1" = 400'

Sec. 30



Sec. 13

Good Hope Twp. Sec. 24

Sec. 32

Larry & Rosemary McKinnis
Tot. 2.6949 Ac.

Columbia Gas Trans. Corp.
Tot. Sec. Ac. 140.43
194-429
17.0 Ac.
Pt. NW 1/4

Lot 6

James & Mary A. Tobin
Total 100 Ac.

Merle R. Conley
150-548
3.91 Ac.

Thomas & Sheila Kraus
187-663
57.5389 Ac.

Donald & Judith Cozad
Tot. Ac. 1.935

Ruby & H. Leonard Cozad
184-384
30.377 Ac.
Pt. NW 1/4

Marion & Patricia Rhodes
179-230
1.903 Ac.

167-481
98.04 Ac.
Pt. N 1/2

David R. & Rita McKittrick
174-340
3.0 Ac.
Lot 7 Pt.

Clifford A. Crawford
97-361
100.0 Ac.
Lot 7 Pt.

Lot 5 Pt
19.0 Ac

Gary & Sandra Starner
185-145
Tot. Ac. 102.88

(Helen McGrady - Life Estate)

82.83 Ac.
SE Pt.

Columbia Gas Transmission Corp.
194-429
Tot. Sec. Ac. 140.43

123.43 Ac.
Lot 7 Pt.

Gloria Hanby
135-56, 194-469
68.25 Ac.
Lot 2

Martha Sue Wagner
133-658
6.65 Ac.

Lot 1

2742.3

2742.3

Falls Twp. Sec. 6

Sec 31