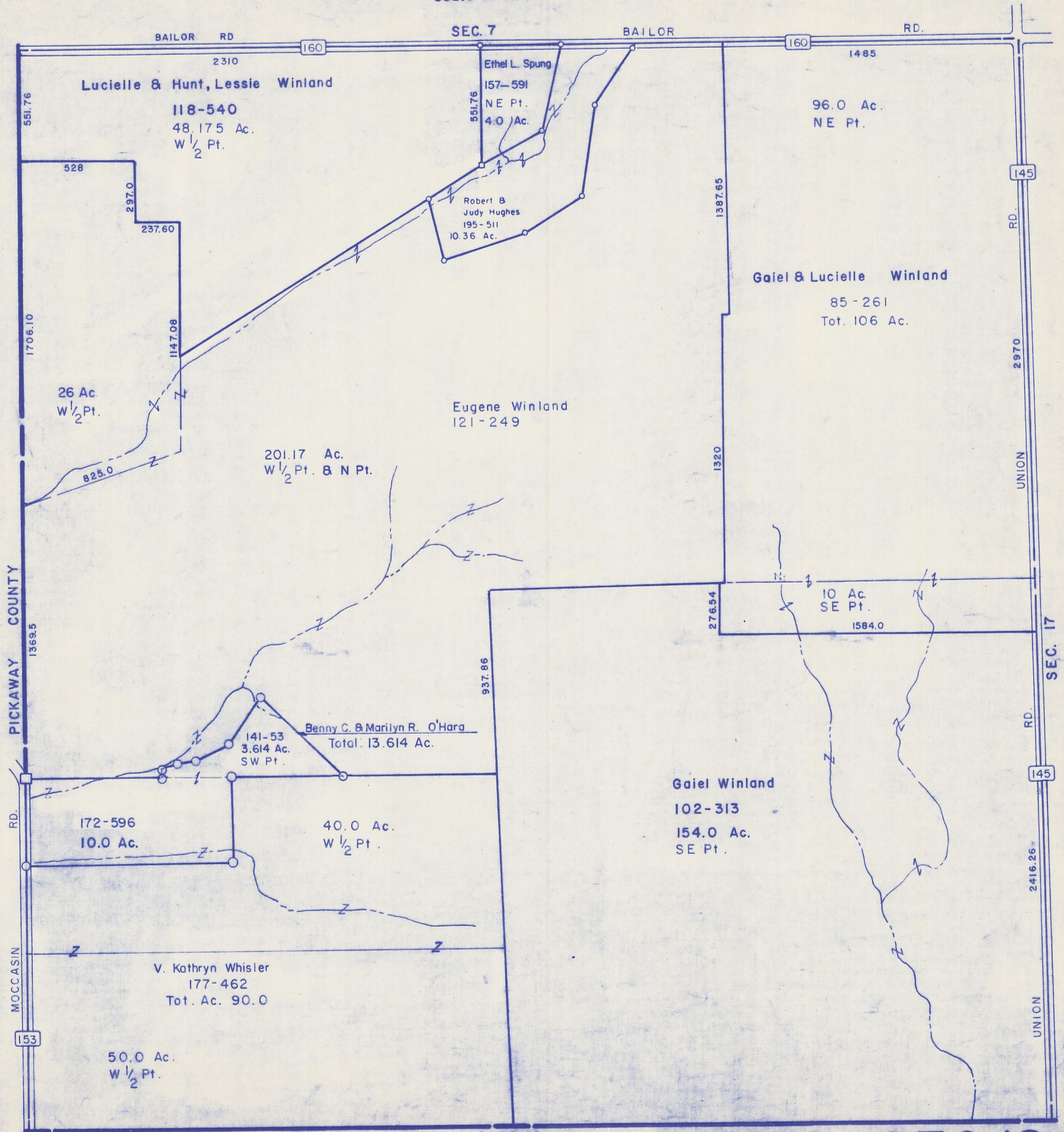


HOCKING COUNTY

SEC. 18 T.12 R.19

PERRY TWP.

Scale 1"=400'



SEC. 7

BAILOR RD

160

2310

Lucielle & Hunt, Lessie Winland

118-540

48.175 Ac.

W 1/2 Pt.

551.76

528

297.0

237.60

1147.08

26 Ac.

W 1/2 Pt.

825.0

Ethel L. Spung

157-591

NE Pt.

4.0 Ac.

551.76

Robert & Judy Hughes

195-511

10.36 Ac.

1485

96.0 Ac.

NE Pt.

1387.65

Gaiel & Lucielle Winland

85-261

Tot. 106 Ac.

1320

Eugene Winland

121-249

201.17 Ac.

W 1/2 Pt. & N Pt.

1706.10

1369.5

PICKAWAY COUNTY

MOCCASIN RD.

145

2970

UNION RD.

10 Ac.

SE Pt.

1584.0

276.54

Benny C. & Marilyn R. O'Hara

141-53

3.614 Ac.

SW Pt.

Total. 13.614 Ac.

40.0 Ac.

W 1/2 Pt.

Gaiel Winland

102-313

154.0 Ac.

SE Pt.

937.86

2416.26

145

UNION RD.

SEC. 17

SEC. 19

SEC 18