

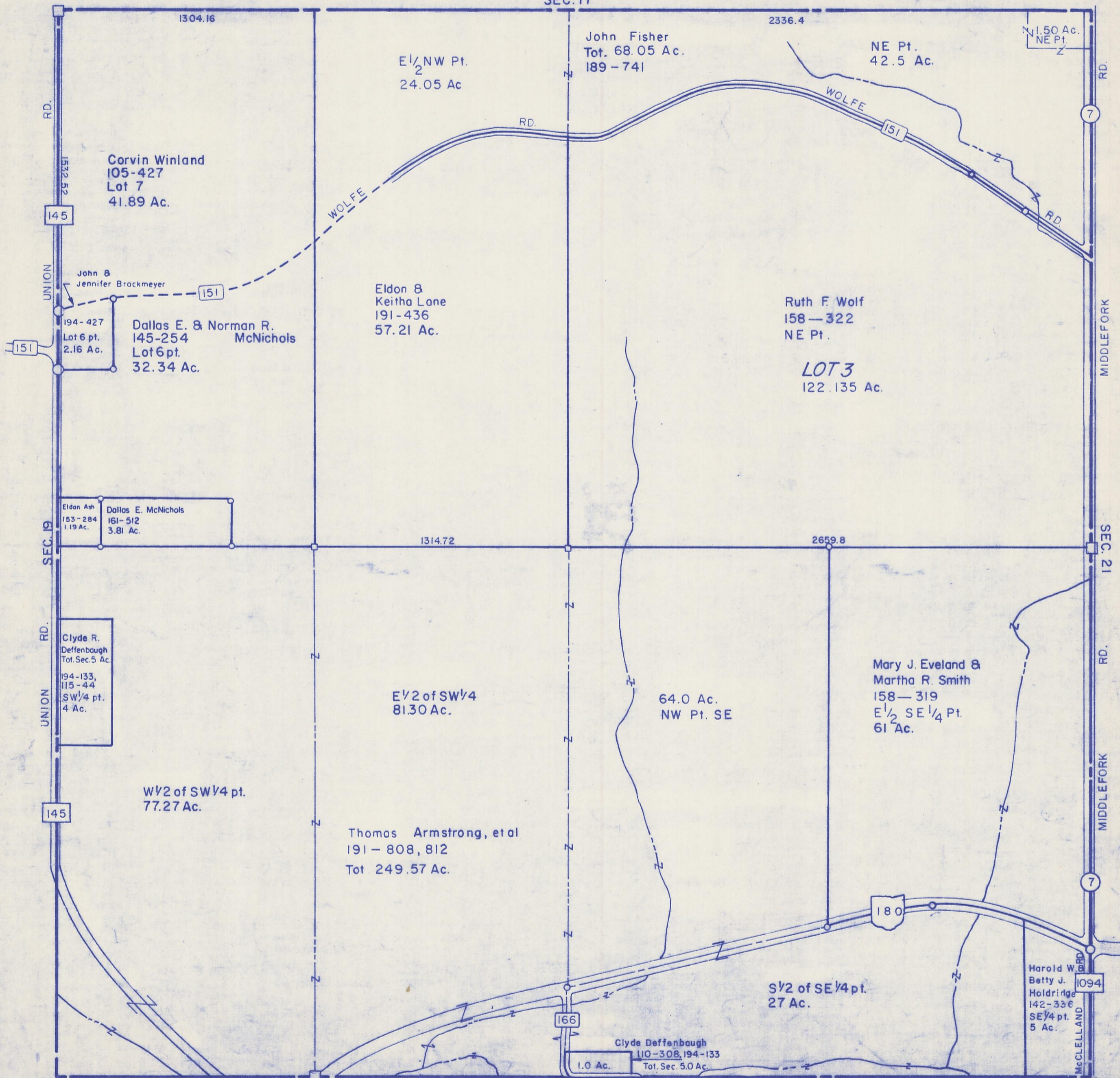
HOCKING COUNTY

Sec. 20 T12 R19

PERRY TWP.

Scale: 1"=400'

SEC. 17



1304.16

2336.4

NE Pt.
1.50 Ac.
NE Pt.

E 1/2 NW Pt.
2
24.05 Ac.

John Fisher
Tot. 68.05 Ac.
189-741

NE Pt.
42.5 Ac.

Corvin Winland
105-427
Lot 7
41.89 Ac.

John &
Jennifer Brockmeyer

194-427
Lot 6 pt.
2.16 Ac.

Dallas E. & Norman R.
McNichols
Lot 6 pt.
32.34 Ac.

Eldon &
Keitha Lane
191-436
57.21 Ac.

Ruth F. Wolf
158-322
NE Pt.

LOT 3
122.135 Ac.

Eldon Ash
153-284
1.19 Ac.

Dallas E. McNichols
161-512
3.81 Ac.

1314.72

2659.8

Clyde R.
Deffenbaugh
Tot. Sec. 5 Ac.
194-133,
115-44
SW 1/4 pt.
4 Ac.

E 1/2 of SW 1/4
81.30 Ac.

64.0 Ac.
NW Pt. SE

Mary J. Eveland &
Martha R. Smith
158-319
E 1/2 SE 1/4 Pt.
61 Ac.

W 1/2 of SW 1/4 pt.
77.27 Ac.

Thomas Armstrong, et al
191-808, 812
Tot. 249.57 Ac.

S 1/2 of SE 1/4 pt.
27 Ac.

Clyde Deffenbaugh
110-308, 194-133
1.0 Ac.
Tot. Sec. 5.0 Ac.

Harold W.
Betty J.
Holdridge
142-336
SE 1/4 pt.
5 Ac.

SEC. 29

SEC. 20