

HOCKING COUNTY

Sec. 24 T12 R19

PERRY TWP

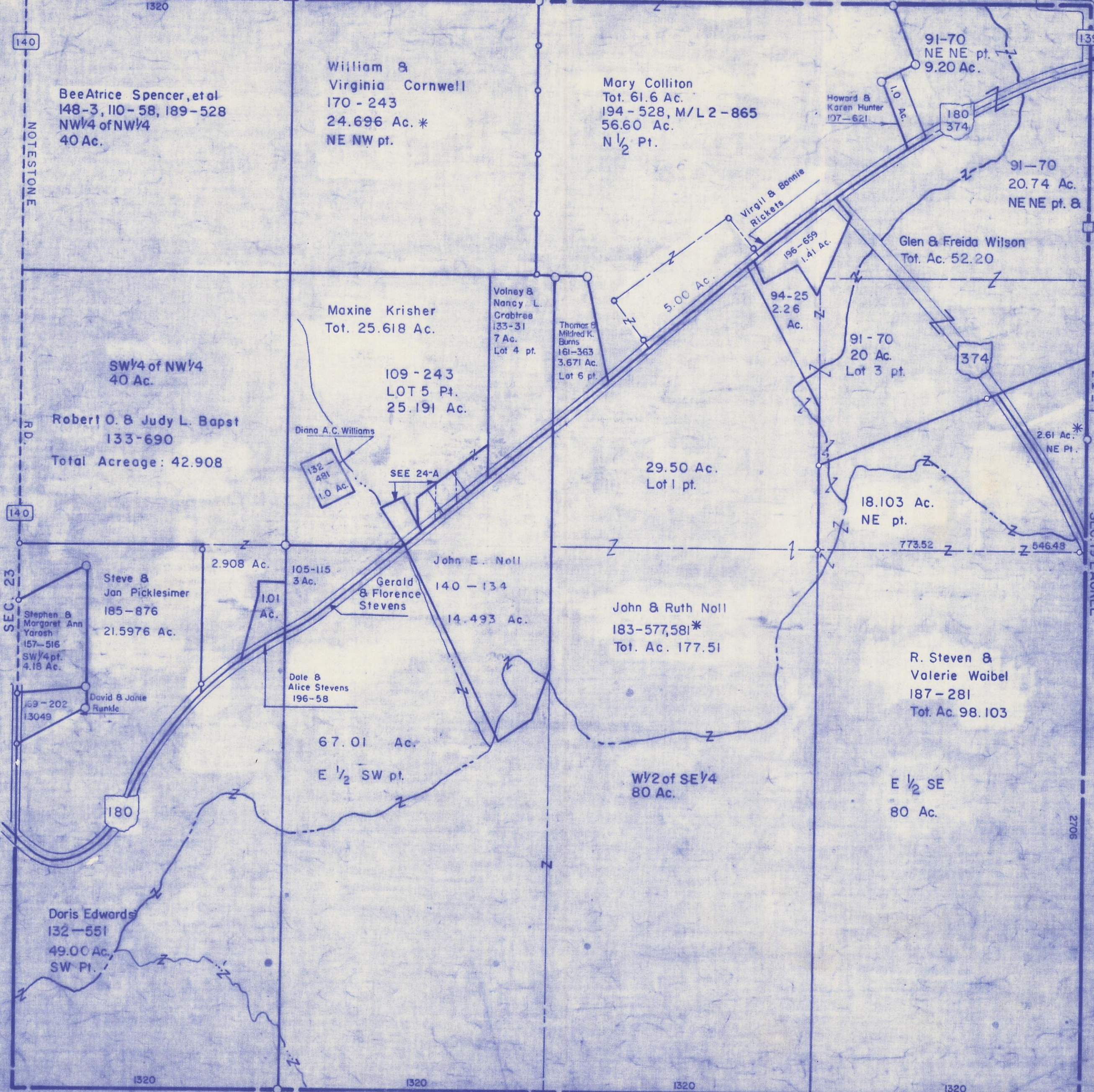
Scale: 1" = 400'

SEC. 13

Sec. 18 LAUREL

SEC. 19 LAUREL

2706



BeeAtrice Spencer, et al
148-3, 110-58, 189-528
NW 1/4 of NW 1/4
40 Ac.

William &
Virginia Cornwell
170-243
24.696 Ac. *
NE NW pt.

Mary Colliton
Tot. 61.6 Ac.
194-528, M/L 2-865
56.60 Ac.
N 1/2 Pt.

91-70
NE NE pt.
9.20 Ac.

Howard &
Karen Hunter
107-621
1.0 Ac.

180
374

91-70
20.74 Ac.
NE NE pt. &

Glen & Freida Wilson
Tot. Ac. 52.20

Maxine Krisher
Tot. 25.618 Ac.

Volney &
Nancy L.
Crabtree
133-31
7 Ac.
Lot 4 pt.

Thomas &
Mildred K.
Burns
161-363
3.671 Ac.
Lot 6 pt.

5.00 Ac.

96-659
1.41 Ac.

94-25
2.26
Ac.

91-70
20 Ac.
Lot 3 pt.

SW 1/4 of NW 1/4
40 Ac.

Robert O. & Judy L. Bapst
133-690
Total Acreage: 42.908

109-243
LOT 5 Pt.
25.191 Ac.

Diana A.C. Williams

132-
481
1.0 Ac.

SEE 24-A

29.50 Ac.
Lot 1 pt.

18.103 Ac.
NE pt.

2.61 Ac. *
NE Pt.

Neil & Connie
Kerns
153-53C *

SEC. 23

Stephen &
Margaret Ann
Yarosh
157-516
SW 1/4 pt.
4.18 Ac.

Steve &
Jan Picklesimer
185-876
21.5976 Ac.

David & Janie
Runkle

169-202
13049

2.908 Ac.

105-115
3 Ac.

1.01
Ac.

Gerald
& Florence
Stevens

John E. Noll
140-134

14.493 Ac.

John & Ruth Noll
183-577,581 *
Tot. Ac. 177.51

Dale &
Alice Stevens
196-58

R. Steven &
Valerie Waibel
187-281
Tot. Ac. 98.103

67.01 Ac.
E 1/2 SW pt.

W 1/2 of SE 1/4
80 Ac.

E 1/2 SE
80 Ac.

Doris Edwards
132-551
49.00 Ac.
SW Pt.

1320 1320 1320 1320

SEC. 25

SEC. 24