

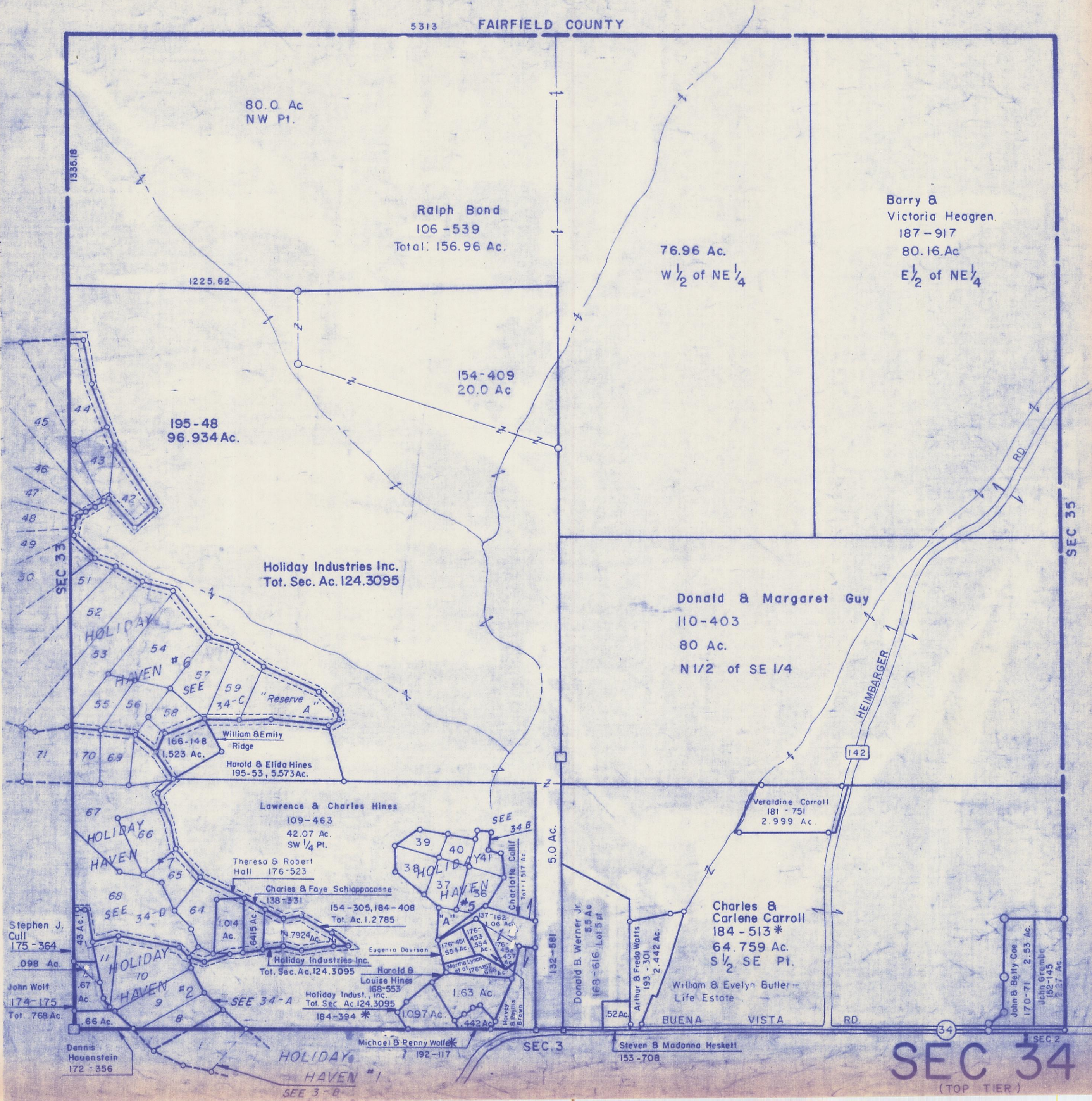
HOCKING COUNTY

SEC. 34 (Top Tier) T.13 R.19

PERRY TWP.

Scale 1" = 400'

5313 FAIRFIELD COUNTY



80.0 Ac
NW Pt.

Ralph Bond
106-539
Total: 156.96 Ac.

76.96 Ac.
W 1/2 of NE 1/4

Barry &
Victoria Heagren
187-917
80.16 Ac
E 1/2 of NE 1/4

195-48
96.934 Ac.

154-409
20.0 Ac

Holiday Industries Inc.
Tot. Sec. Ac. 124.3095

Donald & Margaret Guy
110-403
80 Ac.
N 1/2 of SE 1/4

Lawrence & Charles Hines
109-463
42.07 Ac.
SW 1/4 Pt.

Veraldine Carroll
181-751
2.999 Ac.

Theresa & Robert Hall
176-523

Charles & Carlene Carroll
184-513*
64.759 Ac.
S 1/2 SE Pt.

Stephen J. Cull
175-364
0.98 Ac.

Holiday Industries Inc.
Tot. Sec. Ac. 124.3095

John Wolf
174-175
Tot. 768 Ac.

Holiday Indust., Inc.
184-394*
1.097 Ac.

Dennis Hauenstein
172-356

HOLIDAY HAVEN #1
SEE 3-B

Steven & Madonna Heskett
153-708

SEC 34
(TOP TIER)