

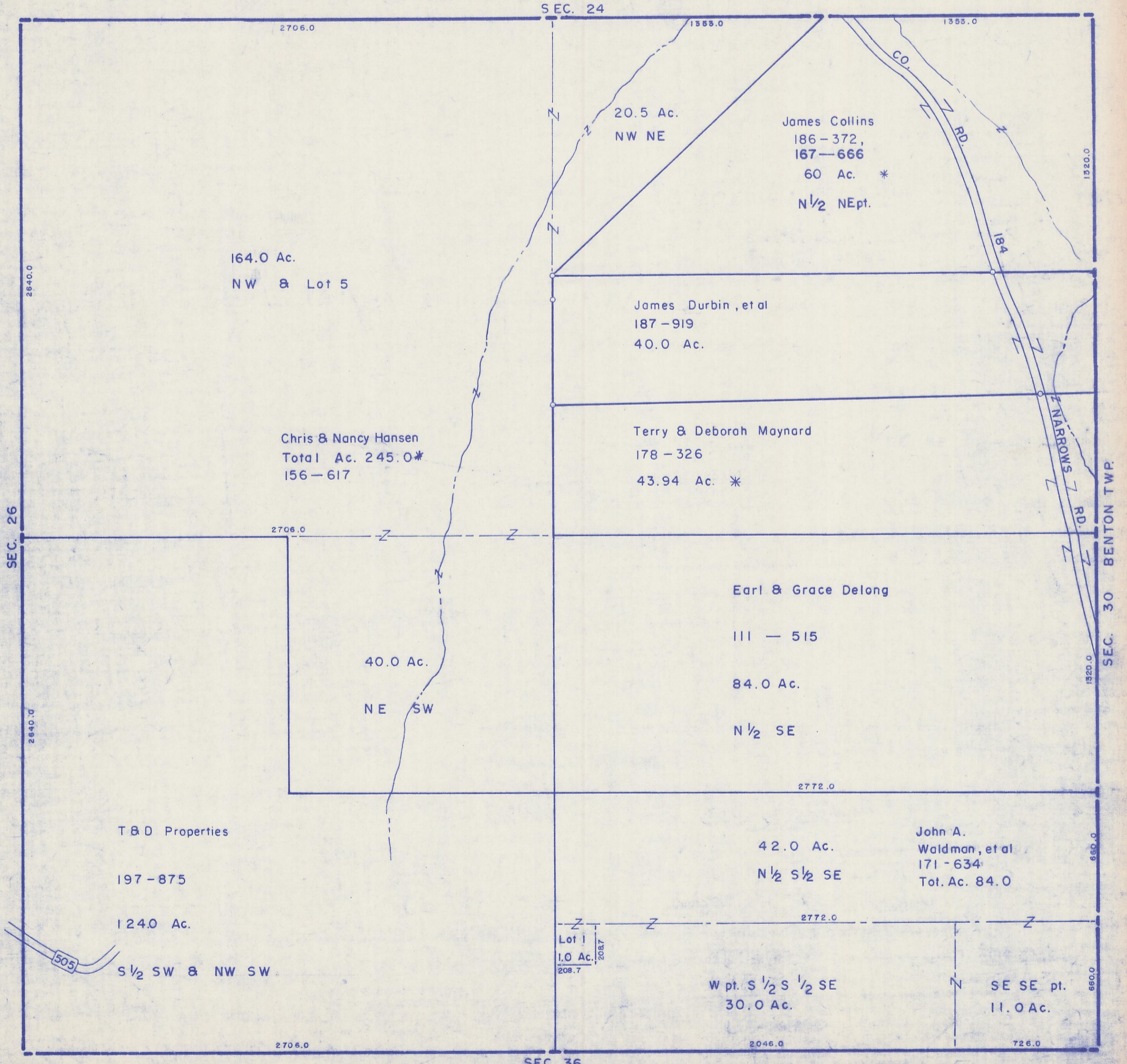
HOCKING COUNTY

Sec. 25 T11 R19

SALT CREEK TWP.

Scale 1"=400'

PAGE 25



164.0 Ac.  
NW & Lot 5

Chris & Nancy Hansen  
Total Ac. 245.0\*  
156-617

40.0 Ac.  
NE SW

T & D Properties  
197-875  
124.0 Ac.

S 1/2 SW & NW SW

20.5 Ac.  
NW NE

James Collins  
186-372,  
167-666  
60 Ac. \*  
N 1/2 NEpt.

James Durbin, et al  
187-919  
40.0 Ac.

Terry & Deborah Maynard  
178-326  
43.94 Ac. \*

Earl & Grace Delong  
111-515  
84.0 Ac.  
N 1/2 SE

42.0 Ac.  
N 1/2 S 1/2 SE

John A.  
Waldman, et al  
171-634  
Tot. Ac. 84.0

Lot 1  
1.0 Ac.  
208.7

W pt. S 1/2 S 1/2 SE  
30.0 Ac.

SE SE pt.  
11.0 Ac.

SEC. 25