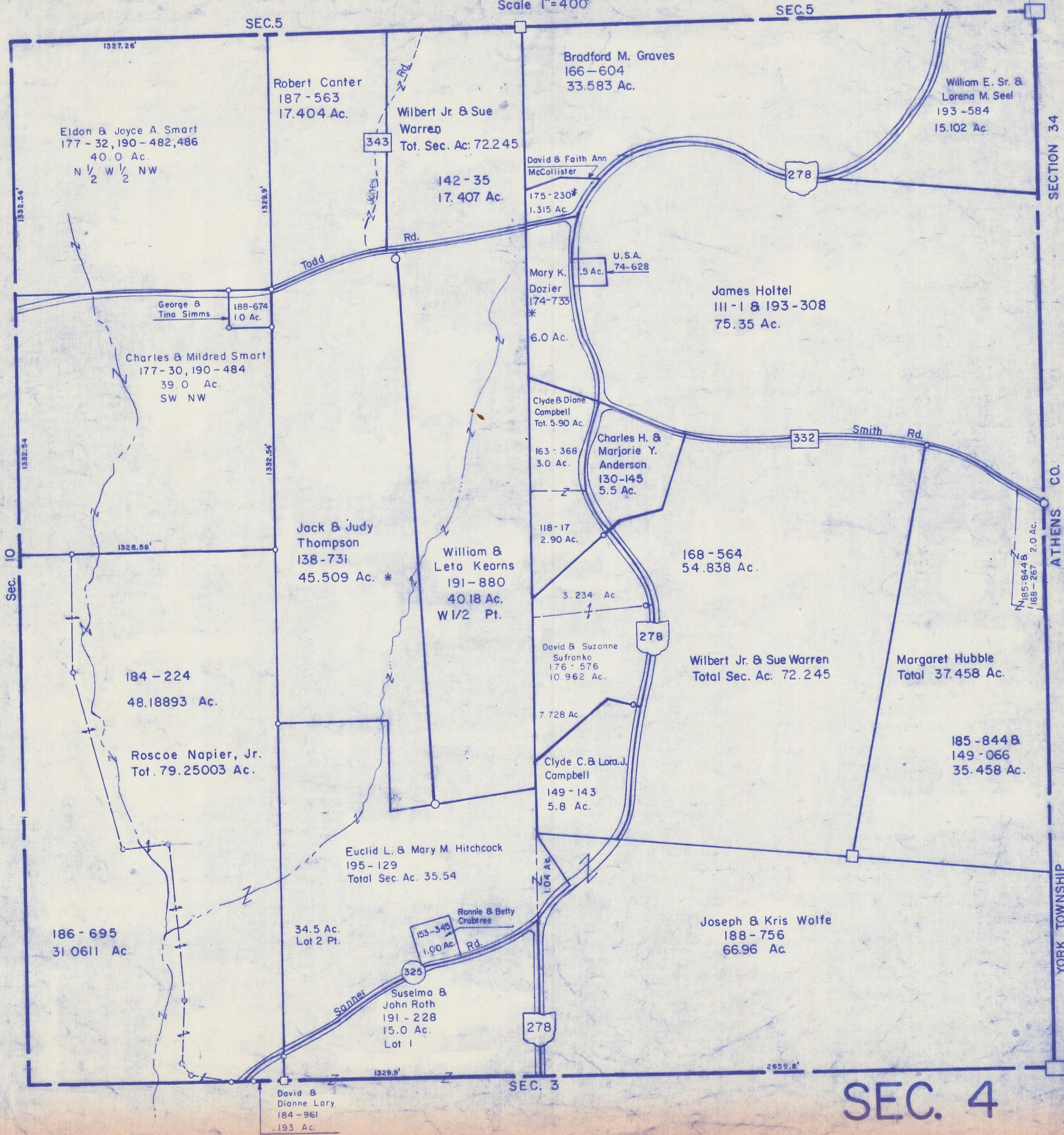


HOCKING COUNTY

Sec. 4 T 12 R 6

STARR TWP.

Scale 1"=400'



Eldon & Joyce A. Smart
177-32, 190-482, 486
40.0 Ac.
N 1/2 W 1/2 NW

Robert Canter
187-563
17.404 Ac.

Wilbert Jr. & Sue
Warren
Tot. Sec. Ac: 72.245

Bradford M. Graves
166-604
33.583 Ac.

William E. Sr. &
Lorena M. Seel
193-584
15.102 Ac.

142-35
17.407 Ac.

David & Faith Ann
McCollister
175-230*
1.315 Ac.

George &
Tina Simms
188-674
1.0 Ac.

Mary K.
Dozier
174-733
*
6.0 Ac.

U.S.A.
74-628
.5 Ac.

James Holtel
111-1 & 193-308
75.35 Ac.

Charles & Mildred Smart
177-30, 190-484
39.0 Ac.
SW NW

Clyde & Diane
Campbell
Tot. 5.90 Ac.

Charles H. &
Marjorie Y.
Anderson
130-145
5.5 Ac.

Jack & Judy
Thompson
138-731
45.509 Ac. *

William &
Leta Kearns
191-880
40.18 Ac.
W 1/2 Pt.

118-17
2.90 Ac.

168-564
54.838 Ac.

3.234 Ac.

David & Suzanne
Sufranko
176-576
10.962 Ac.

Wilbert Jr. & Sue Warren
Total Sec. Ac: 72.245

Margaret Hubble
Total 37.458 Ac.

184-224
48.18893 Ac.

Roscoe Napier, Jr.
Tot. 79.25003 Ac.

7.728 Ac.

Clyde C. & Lora J.
Campbell
149-143
5.8 Ac.

185-844 &
149-066
35.458 Ac.

Euclid L. & Mary M. Hitchcock
195-129
Total Sec. Ac. 35.54

34.5 Ac.
Lot 2 Pt.

Ronnie & Betty
Crabtree
153-345
1.00 Ac.
Rd.

Joseph & Kris Wolfe
188-756
66.96 Ac.

186-695
31.0611 Ac

Suselma &
John Roth
191-228
15.0 Ac.
Lot 1

David &
Dianne Lary
184-961
.193 Ac.

SEC. 4