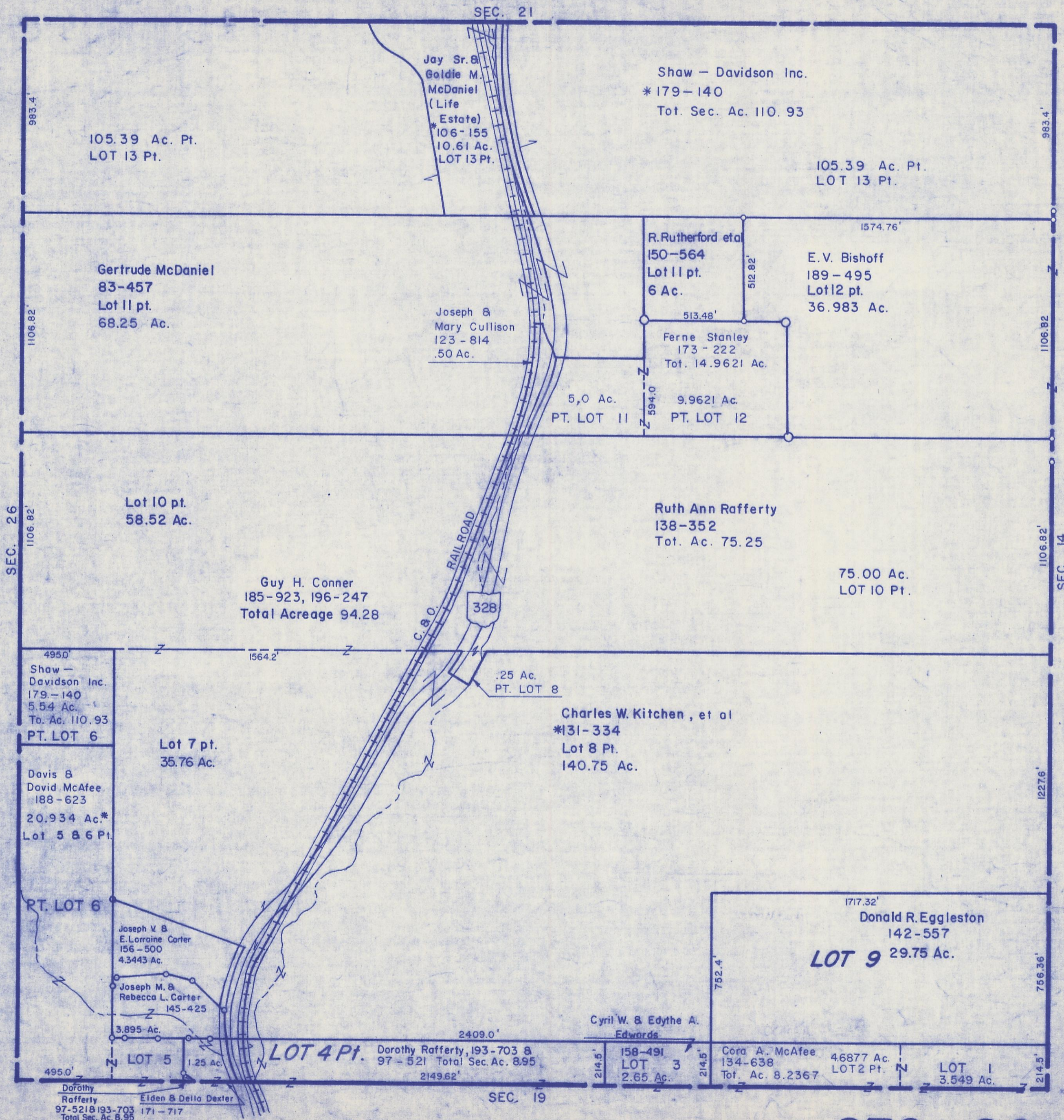


HOCKING COUNTY

STARR TWP.

SEC. 20 T-12 R-16

SCALE 1" = 400'



105.39 Ac. Pt.
LOT 13 Pt.

Jay Sr. &
Goldie M.
McDaniel
(Life
Estate)
*106-155
10.61 Ac.
LOT 13 Pt.

Shaw - Davidson Inc.
*179-140
Tot. Sec. Ac. 110.93

105.39 Ac. Pt.
LOT 13 Pt.

Gertrude McDaniel
83-457
Lot 11 pt.
68.25 Ac.

Joseph &
Mary Cullison
123-814
.50 Ac.

R. Rutherford et al
150-564
Lot 11 pt.
6 Ac.

E.V. Bischoff
189-495
Lot 12 pt.
36.983 Ac.

Ferne Stanley
173-222
Tot. 14.9621 Ac.

5.0 Ac.
PT. LOT 11

9.9621 Ac.
PT. LOT 12

Lot 10 pt.
58.52 Ac.

Ruth Ann Rafferty
138-352
Tot. Ac. 75.25

75.00 Ac.
LOT 10 Pt.

Guy H. Conner
185-923, 196-247
Total Acreage 94.28

328

Shaw -
Davidson Inc.
179-140
5.54 Ac.
To. Ac. 110.93
PT. LOT 6

Lot 7 pt.
35.76 Ac.

Charles W. Kitchen, et al
*131-334
Lot 8 Pt.
140.75 Ac.

Davis &
David McAfee
188-623
20.934 Ac.*
Lot 5 & 6 Pt.

PT. LOT 6

Joseph V. &
E. Lorraine Carter
156-500
4.3443 Ac.

Joseph M. &
Rebecca L. Carter
145-425

3.895 Ac.

1.25 Ac.

Dorothy
Rafferty
97-521 & 193-703
Total Sec. Ac. 8.95

Elden & Della Dexter
171-717

LOT 4 Pt. Dorothy Rafferty, 193-703 &
97-521 Total Sec. Ac. 8.95
2149.62'

Cyril W. & Edythe A.
Edwards

158-491
LOT 3
2.65 Ac.

Cora A. McAfee
134-638
Tot. Ac. 8.2367

4.6877 Ac.
LOT 2 Pt.

LOT 1
3.549 Ac.

SEC. 20