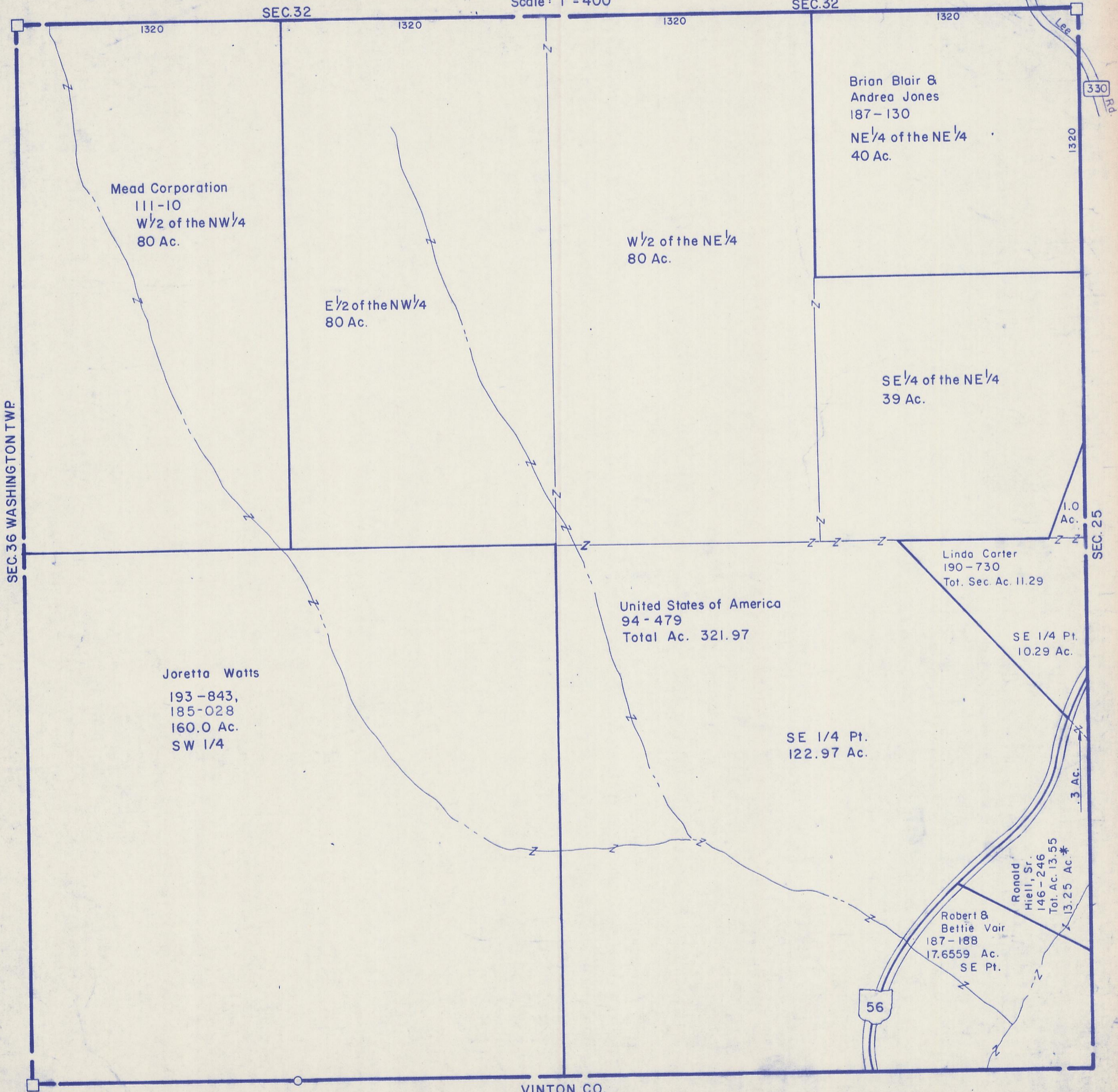


HOCKING COUNTY

Sec. 31 T 12 R 16

STARR TWP.

Scale: 1" = 400'



SEC. 36 WASHINGTON TWP.

SEC. 32

SEC. 32

VINTON CO.

SEC. 31

Mead Corporation
111-10
W 1/2 of the NW 1/4
80 Ac.

E 1/2 of the NW 1/4
80 Ac.

W 1/2 of the NE 1/4
80 Ac.

Brian Blair &
Andrea Jones
187-130
NE 1/4 of the NE 1/4
40 Ac.

SE 1/4 of the NE 1/4
39 Ac.

Joretta Watts
193-843,
185-028
160.0 Ac.
SW 1/4

United States of America
94-479
Total Ac. 321.97

Linda Carter
190-730
Tot. Sec. Ac. 11.29

SE 1/4 Pt.
10.29 Ac.

SE 1/4 Pt.
122.97 Ac.

Ronald
Hiell, Sr.
146-246
Tot. Ac. 13.55

Robert &
Bettie Vair
187-188
17.6559 Ac.
SE Pt.

330

56

1.0
Ac.

.3
Ac.

SEC. 25