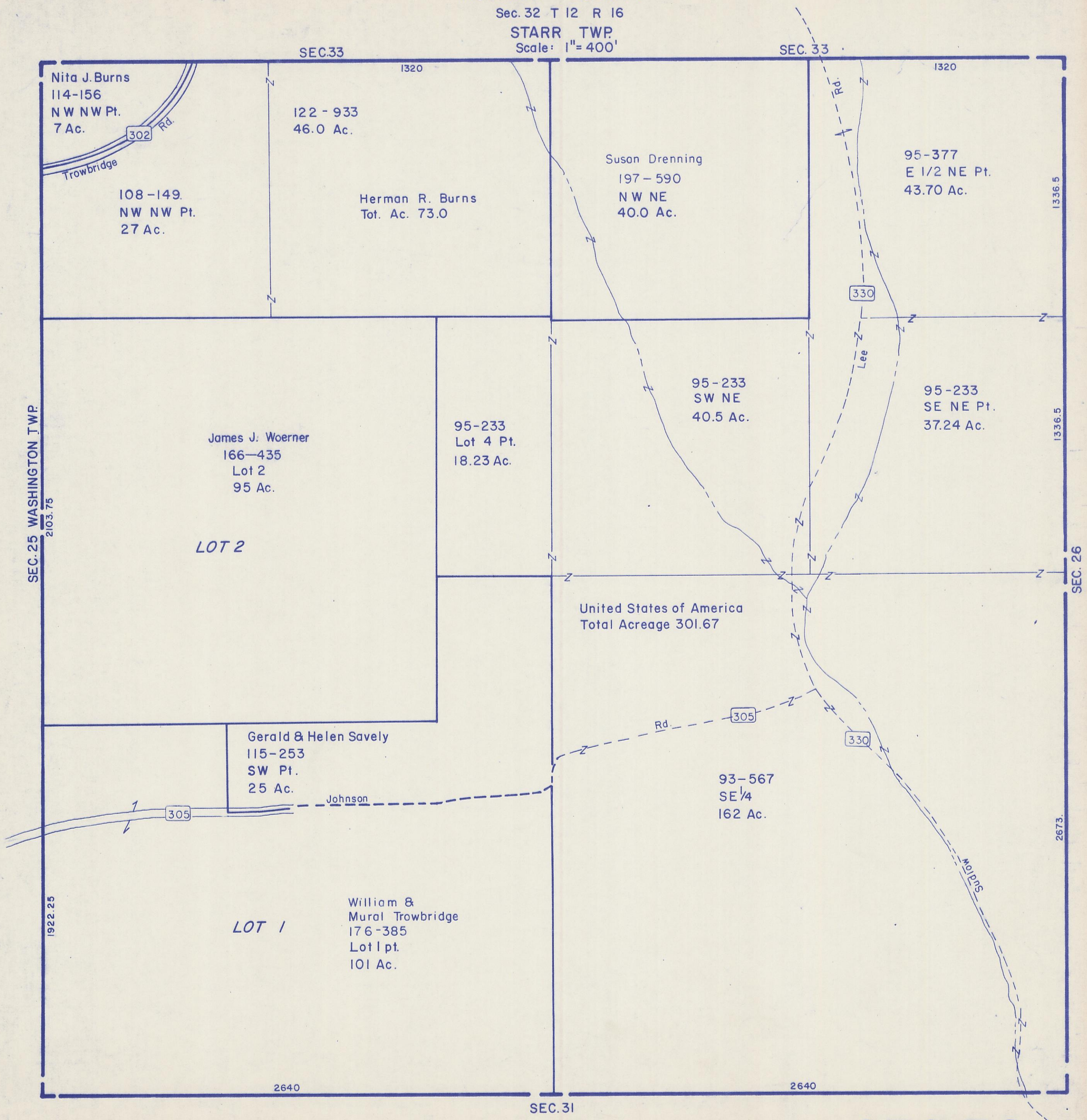


HOCKING COUNTY

Sec. 32 T 12 R 16

STARR TWP.

Scale: 1" = 400'



Nita J. Burns
114-156
NW NW Pt.
7 Ac.

108-149
NW NW Pt.
27 Ac.

122-933
46.0 Ac.

Herman R. Burns
Tot. Ac. 73.0

Susan Drenning
197-590
NW NE
40.0 Ac.

95-377
E 1/2 NE Pt.
43.70 Ac.

James J. Woerner
166-435
Lot 2
95 Ac.

LOT 2

95-233
Lot 4 Pt.
18.23 Ac.

95-233
SW NE
40.5 Ac.

95-233
SE NE Pt.
37.24 Ac.

United States of America
Total Acreage 301.67

Gerald & Helen Savely
115-253
SW Pt.
25 Ac.

Johnson

93-567
SE 1/4
162 Ac.

LOT 1

William &
Mural Trowbridge
176-385
Lot 1 pt.
101 Ac.

SEC. 32