

HOCKING COUNTY

WARD. TWP.

SEC. 1 T13 R15

Scale 1" = 400'

SEC. 2

SEC. 2

LOT 7

81-316
Tot. Lots 6 & 7
468.24 Ac.

LOT 6

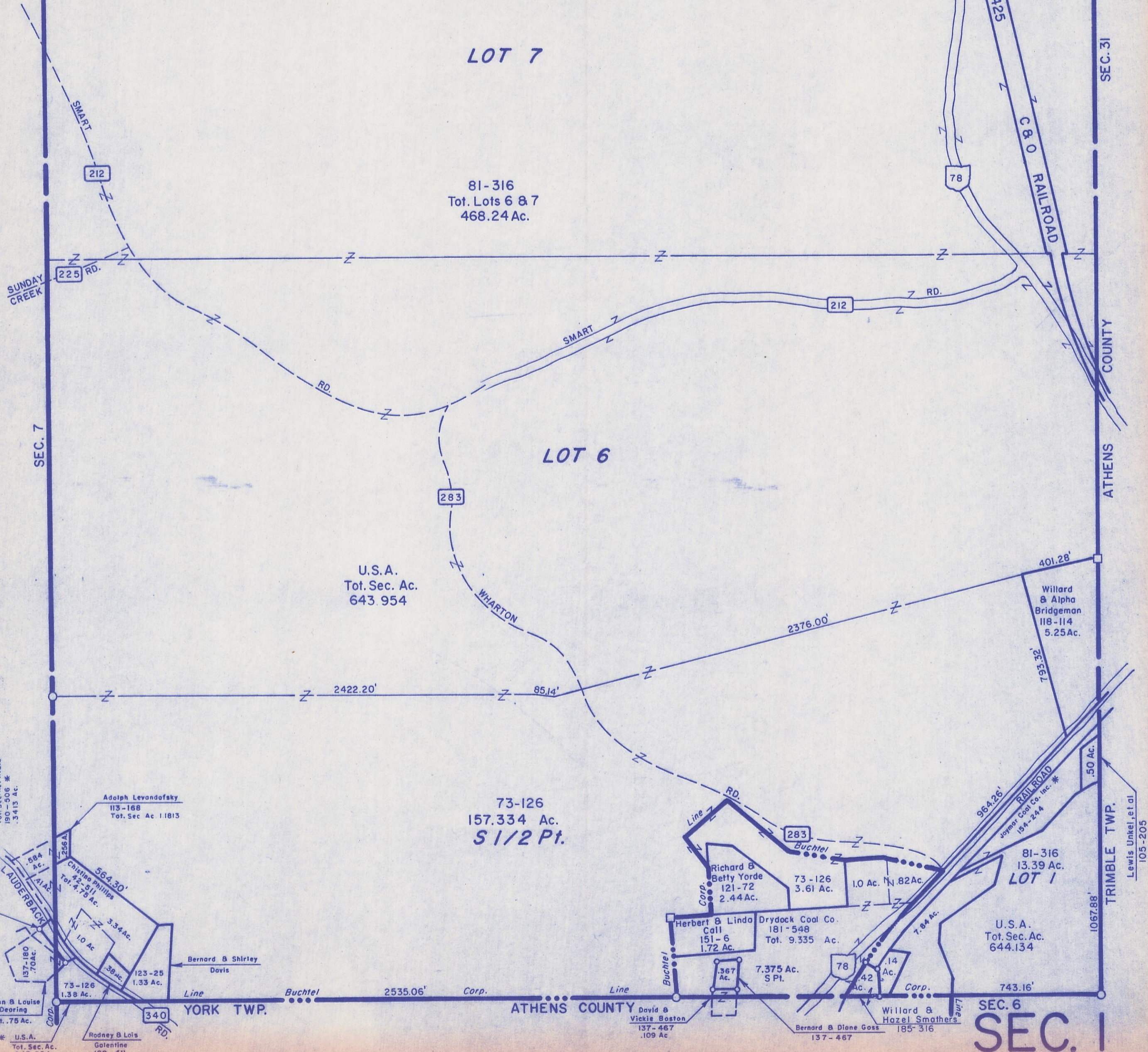
U.S.A.
Tot. Sec. Ac.
643.954

73-126
157.334 Ac.
S 1/2 Pt.

81-316
13.39 Ac.
LOT 1

U.S.A.
Tot. Sec. Ac.
644.134

SEC. 6
SEC. 1



SEC. 31

ATHENS COUNTY

TRIMBLE TWP.

Lewis Unkel, et al
105-205

Adolph Levandofsky
Tot. Sec. Ac. 1.1813
190-506 *
.3415 Ac.

Adolph Levandofsky
113-168
Tot. Sec. Ac. 1.1813

Christine Phillips
42-511
Tot. Ac. 7.79

Bernard & Shirley
Davis

John & Louise
Dearing
Tot. .75 Ac.

Rodney & Lois
Galentine
108-411

Richard & Betty Yorde
121-72
2.44 Ac.

Herbert & Linda
Call
151-6
1.72 Ac.

Drydock Coal Co.
181-548
Tot. 9.335 Ac.

7.375 Ac.
S Pt.

David & Vickie
Boston
137-467
.109 Ac.

Bernard & Diane Goss
137-467

Willard & Hazel
Smathers
185-316

Willard & Alpha
Bridgeman
118-114
5.25 Ac.

Joyner Coal Co. Inc. *
154-224

.50 Ac.

743.16'

1067.88'

SUNDAY CREEK

SMART

212

225 RD.

SEC. 7

283

WHARTON

SMART

212

2376.00'

2422.20'

85.14'

401.28'

793.32'

RD.

283

Richard & Betty Yorde
121-72
2.44 Ac.

73-126
3.61 Ac.

1.0 Ac. N. 82 Ac.

Herbert & Linda
Call
151-6
1.72 Ac.

Drydock Coal Co.
181-548
Tot. 9.335 Ac.

7.375 Ac.
S Pt.

7.84 Ac.

Line

Line

Line

743.16'

1067.88'

.50 Ac.

743.16'

1067.88'