

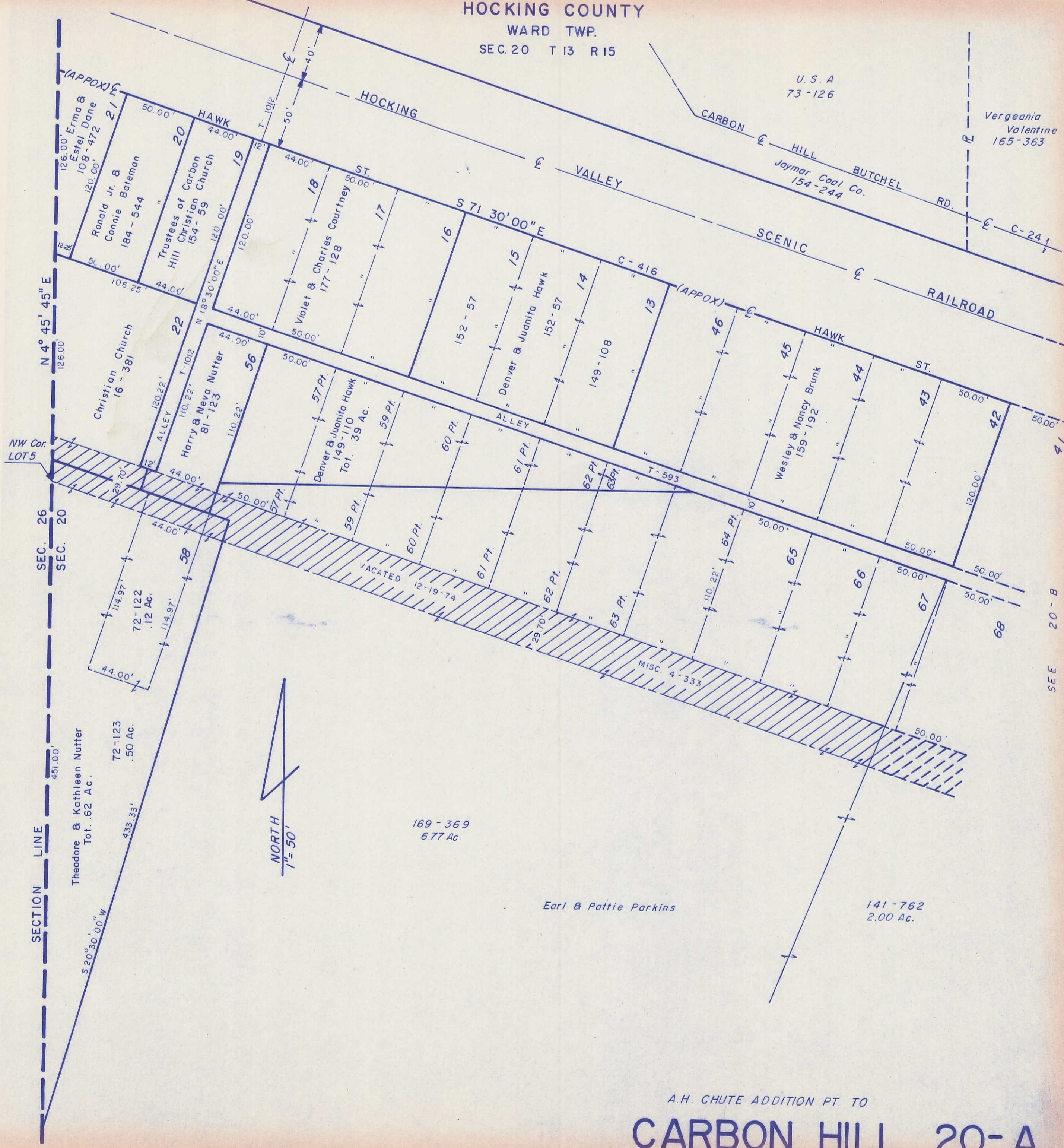
HOCKING COUNTY

WARD TWP.

SEC. 20 T 13 R 15

U. S. A
73-126

Vergeania
Valentine
165-363



N 4° 45' 45" E
126.00'

SEC. 26
SEC. 20

SECTION LINE

Theodore & Kathleen Nutter
Tot. .62 Ac.

72-123
.50 Ac.

NORTH
1" = 50'

169-369
6.77 Ac.

Earl & Pattie Parkins

141-762
2.00 Ac.

A.H. CHUTE ADDITION PT. TO

CARBON HILL 20-A

SEE 20-B