

HOCKING COUNTY

WARD TWP.

SEC. 27 T13 R15

CARBON HILL

27-A

NORTH
Scale 1"=50'

R. Skivers
& R. Rutherford
150-556

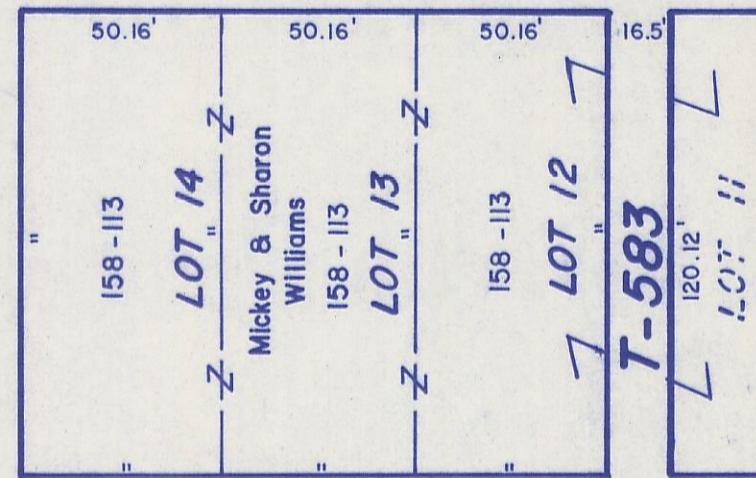
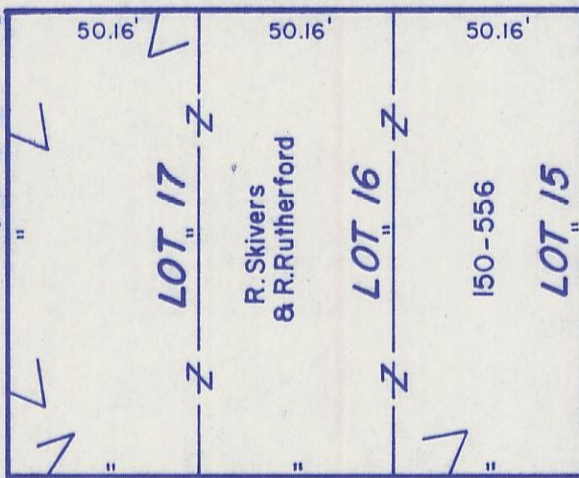
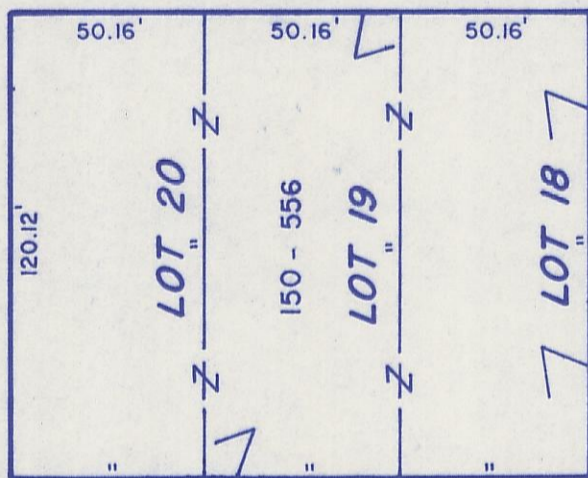
Finley's Add.
Original Town

SEE 27-K

T-582

MINERAL AVENUE

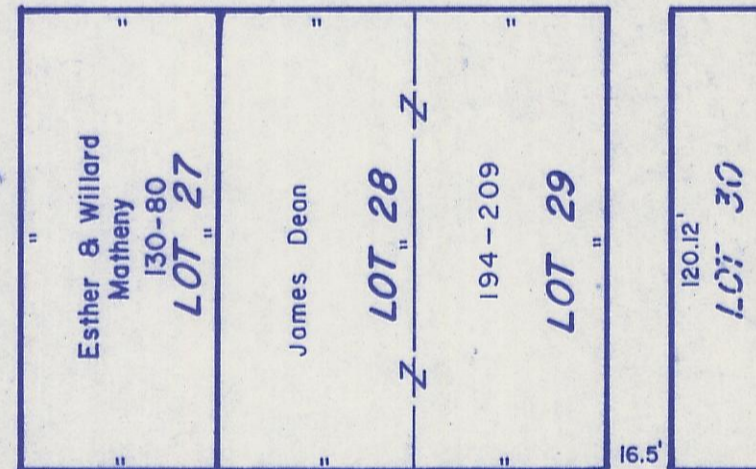
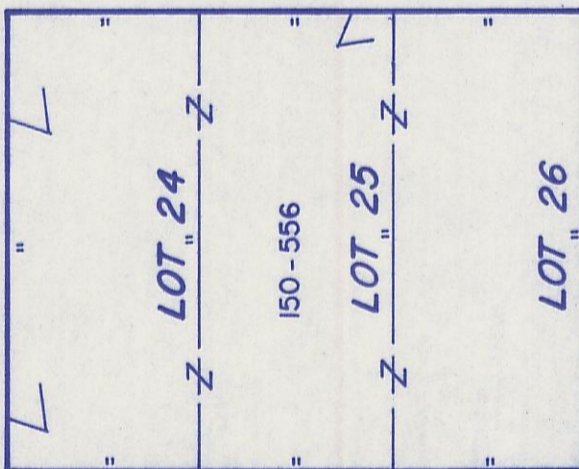
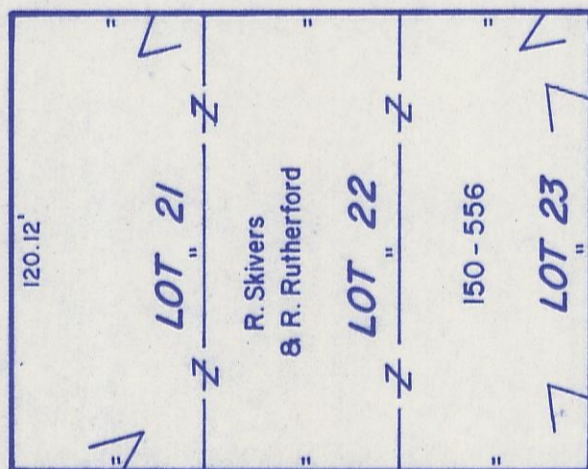
T-589



HIGH ST.

ST.

T-590



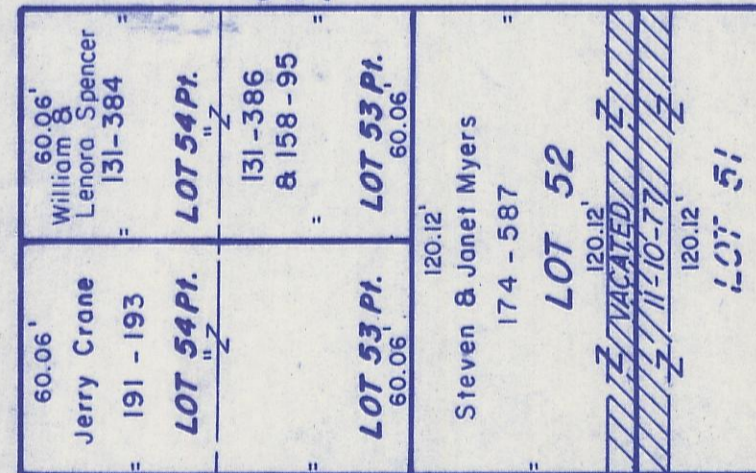
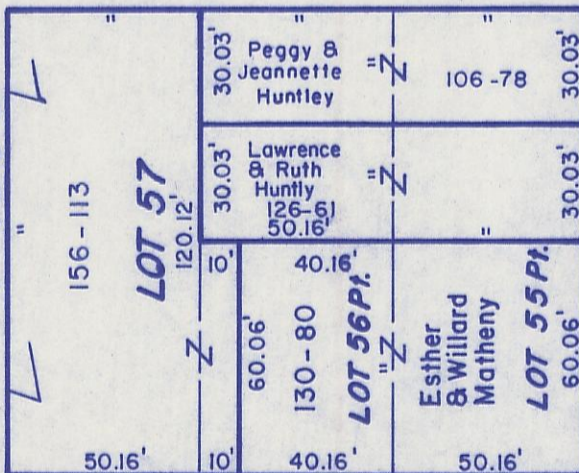
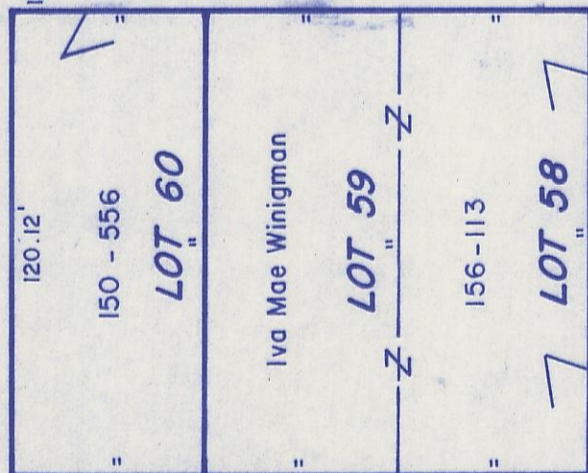
FIRST ST.

T-591

T-1005

SECOND ST.

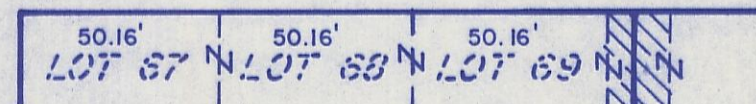
T-591



PROSPECT ST.

ST.

T-1006



SEE 27-I

SEE 27-B

(Original Town)

CARBON HILL 27-A