

HOCKING COUNTY

WARD TWP.

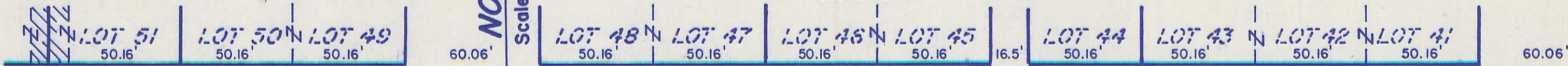
SEC. 27 T13 R15

CARBON HILL

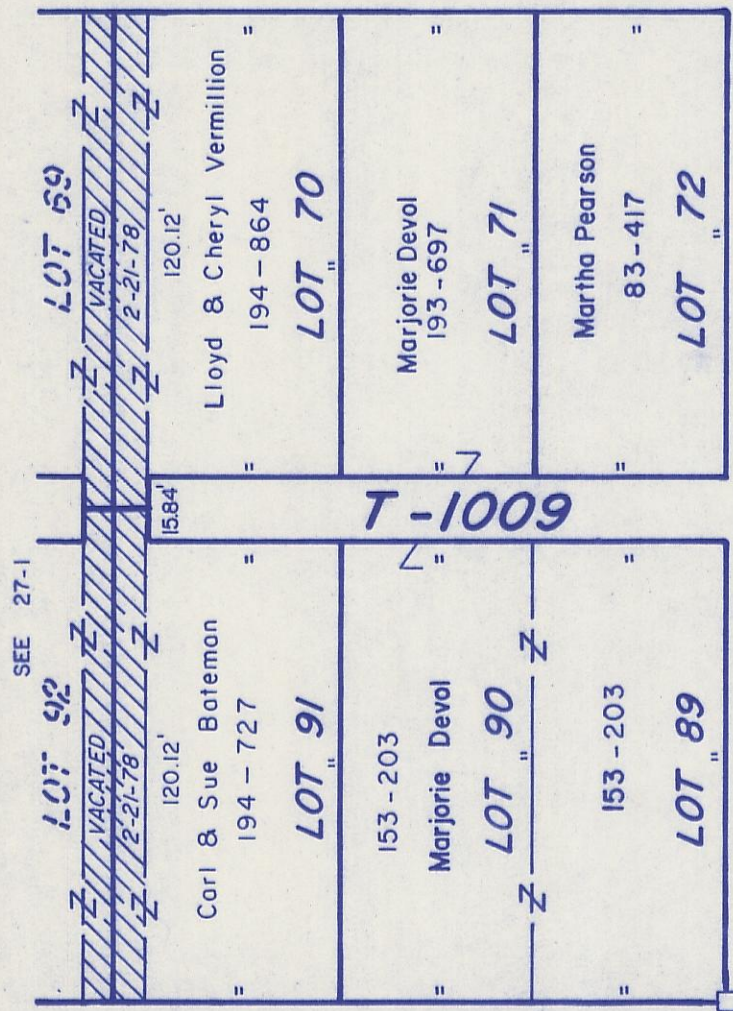
SEE 27-B

27-G

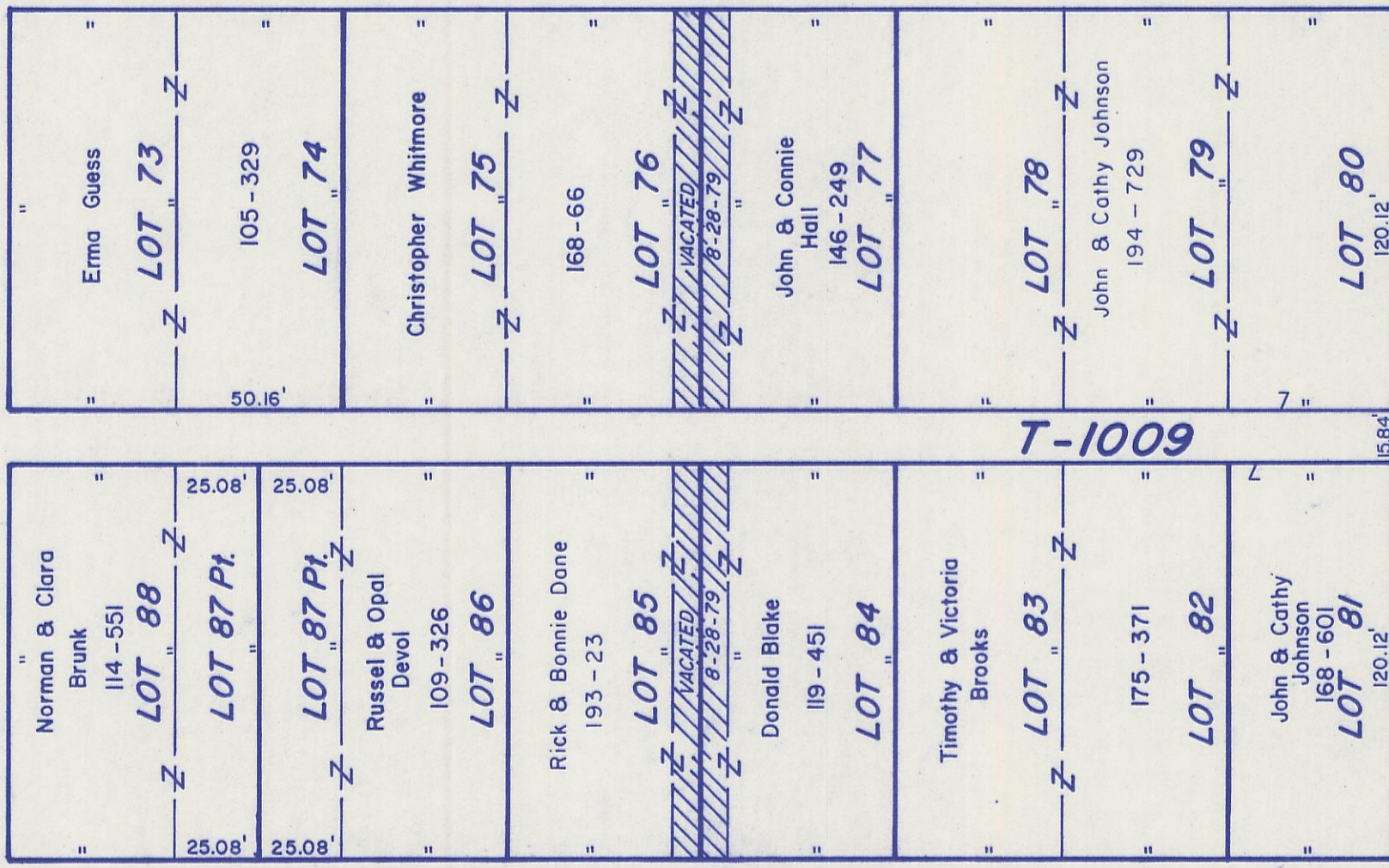
NORTH
Scale 1" = 50'



PROSPECT ST. T-1006



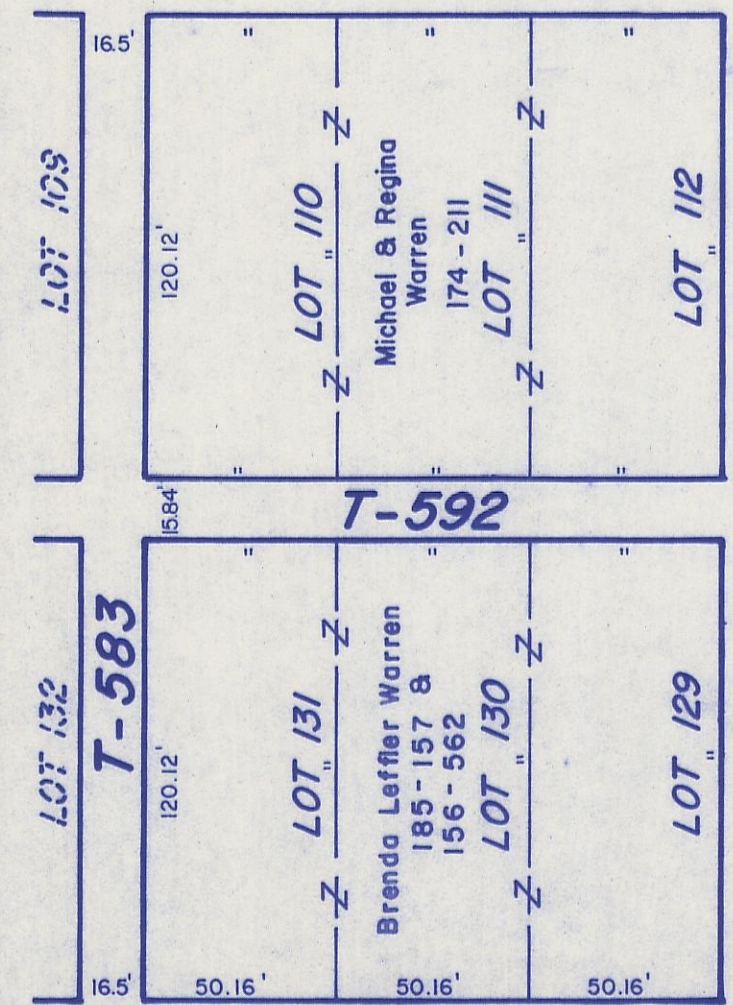
ST. T-1007



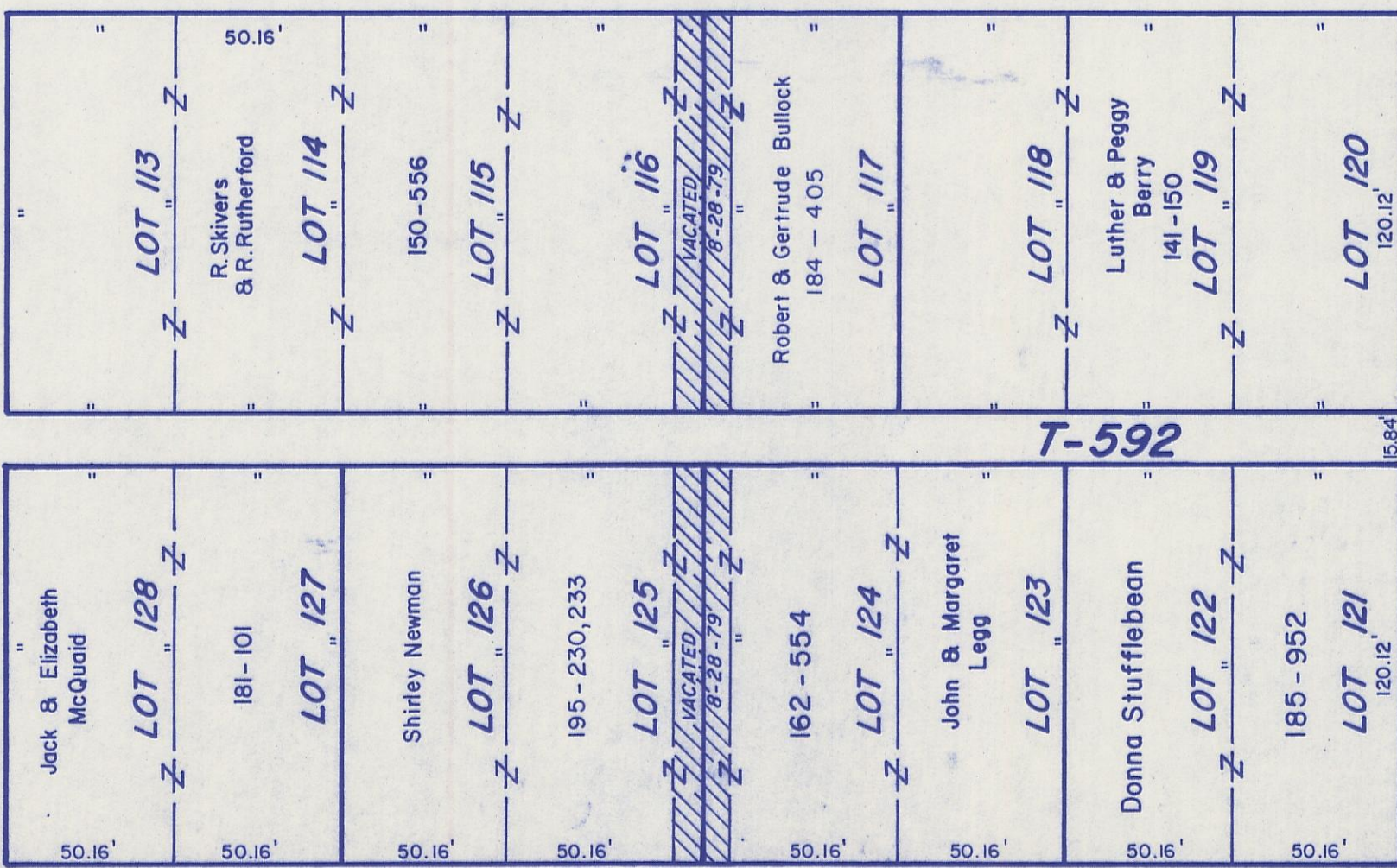
MAIN ST.

ST.

C-24



THIRD ST.



FRONT ST.

ST.

T-1004

ST. T-1008

FOURTH

SEC. 27
SEC. 26

Sec. Line

(Original Town)
CARBON HILL 27-G

Original Town
Smart & Ankeny's
Add.