

HOCKING COUNTY

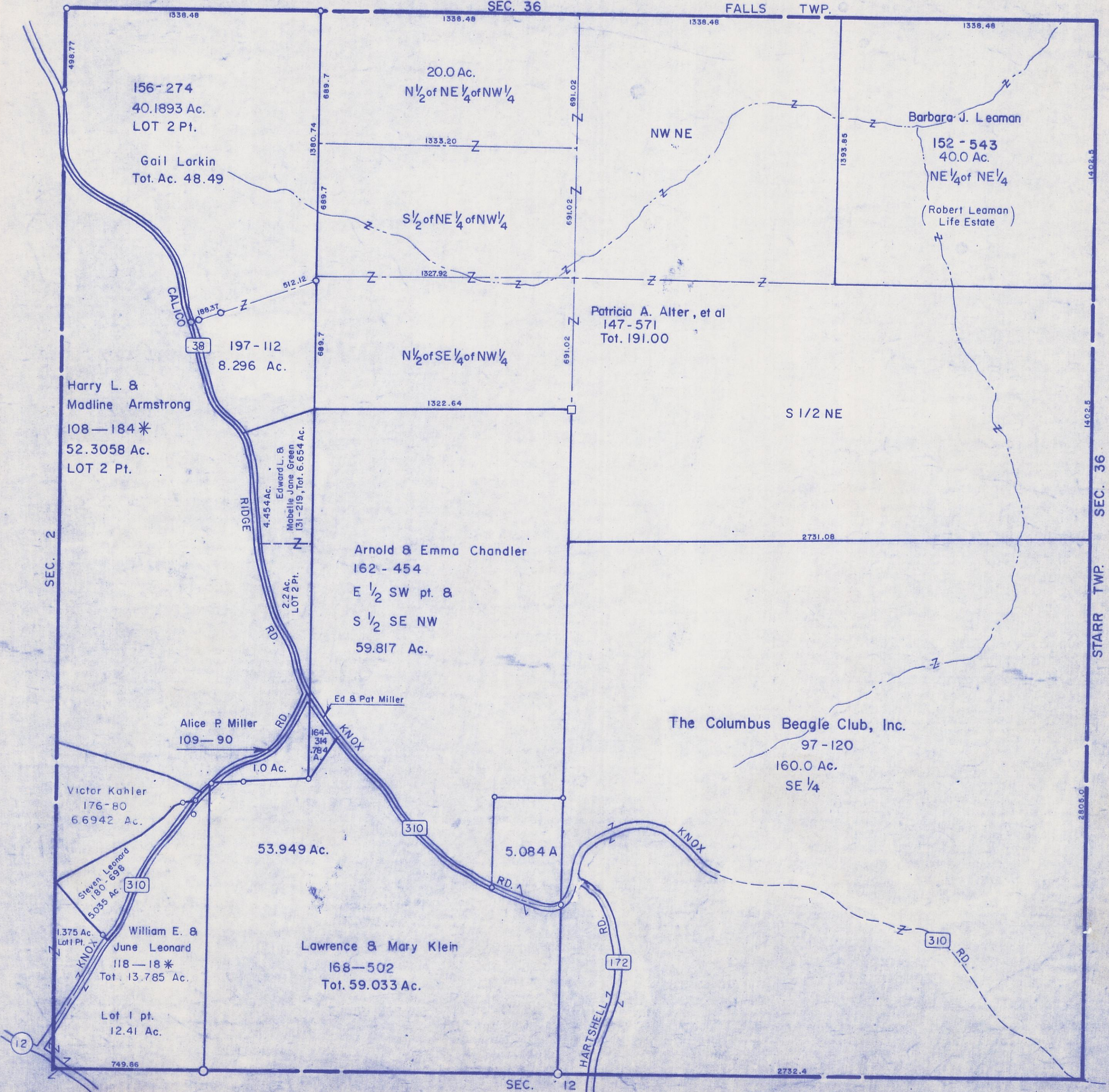
Sec. 1 T.13 R.17

WASHINGTON TWP.

Scale 1"=400'

SEC. 36

FALLS TWP.



156-274
40.1893 Ac.
LOT 2 Pt.

Gail Larkin
Tot. Ac. 48.49

20.0 Ac.
N 1/2 of NE 1/4 of NW 1/4

Barbara J. Leaman

152-543
40.0 Ac.
NE 1/4 of NE 1/4

(Robert Leaman)
Life Estate

197-112
8.296 Ac.

Patricia A. Alter, et al
147-571
Tot. 191.00

Harry L. &
Madline Armstrong
108-184 *
52.3058 Ac.
LOT 2 Pt.

N 1/2 of SE 1/4 of NW 1/4

S 1/2 NE

4.454 Ac.
Edward L. &
Mabelle Jane Green
131-219, Tot. 6.654 Ac.

Arnold & Emma Chandler
162-454
E 1/2 SW pt. &
S 1/2 SE NW
59.817 Ac.

The Columbus Beagle Club, Inc.
97-120
160.0 Ac.
SE 1/4

Alice P. Miller
109-90

Ed & Pat Miller

Victor Kahler
176-80
66942 Ac.

Steven Leonard
180-698
5.035 Ac.

53.949 Ac.

5.084 A

1375 Ac.
Lot 1 Pt.
William E. &
June Leonard
118-18 *
Tot. 13.785 Ac.

Lawrence & Mary Klein
168-502
Tot. 59.033 Ac.

Lot 1 pt.
12.41 Ac.

SEC. 1