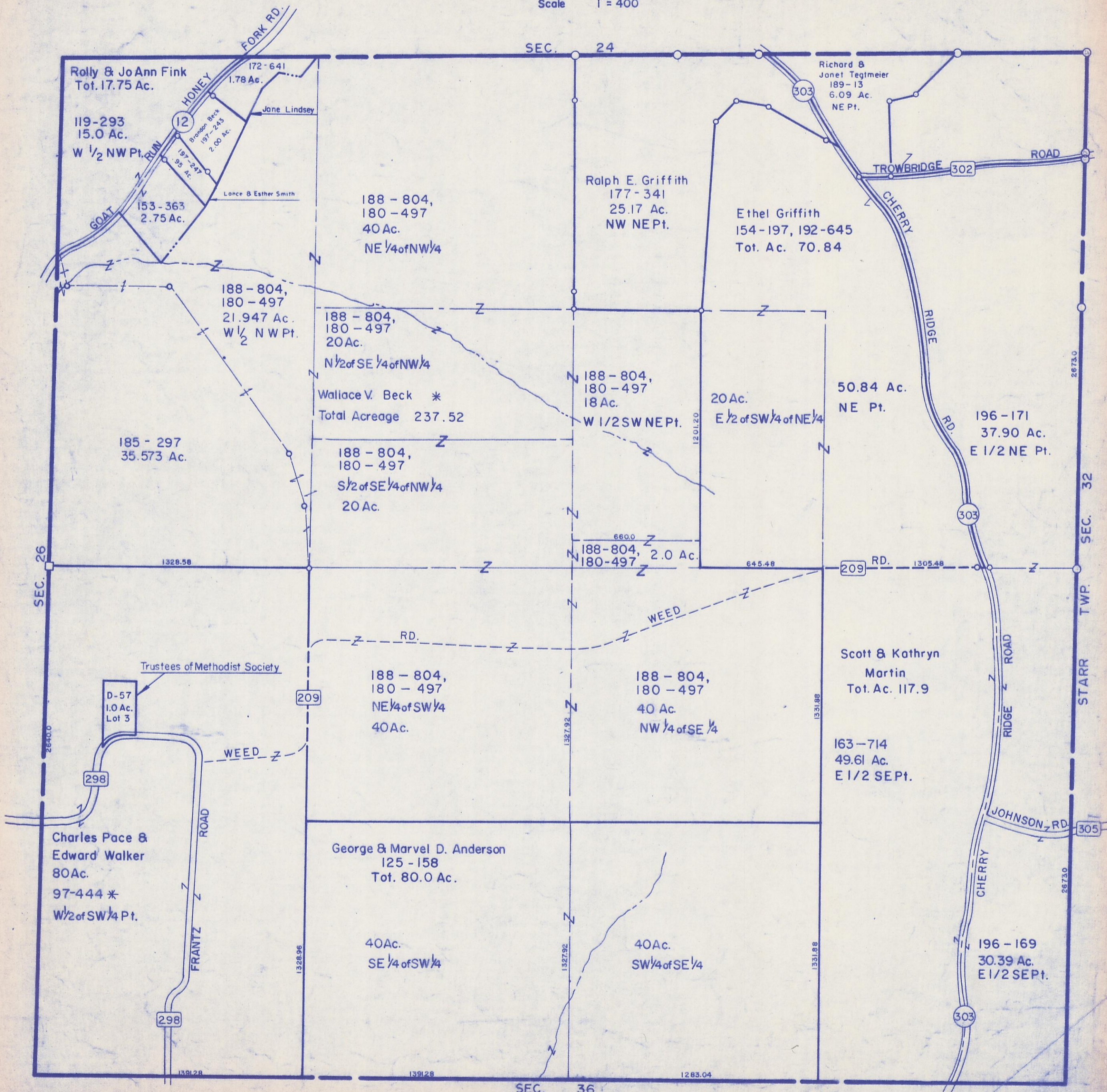


HOCKING COUNTY

Sec. 25 T 13 R 17

WASHINGTON TWP.

Scale 1" = 400'



Rolly & Jo Ann Fink
Tot. 17.75 Ac.

119-293
15.0 Ac.

W 1/2 NW Pt.

153-363
2.75 Ac.

188-804,
180-497
21.947 Ac.
W 1/2 NW Pt.

185-297
35.573 Ac.

D-57
1.0 Ac.
Lot 3

Charles Pace &
Edward Walker
80 Ac.

97-444 *
W 1/2 of SW 1/4 Pt.

188-804,
180-497
40 Ac.
NE 1/4 of NW 1/4

188-804,
180-497
20 Ac.
N 1/2 of SE 1/4 of NW 1/4

Wallace V. Beck *
Total Acreage 237.52

188-804,
180-497
20 Ac.
S 1/2 of SE 1/4 of NW 1/4

188-804,
180-497
40 Ac.
NE 1/4 of SW 1/4

George & Marvel D. Anderson
125-158
Tot. 80.0 Ac.

40 Ac.
SE 1/4 of SW 1/4

Ralph E. Griffith
177-341
25.17 Ac.
NW NE Pt.

188-804,
180-497
18 Ac.
W 1/2 SW NE Pt.

188-804,
180-497
2.0 Ac.
NW 1/4 of SE 1/4

188-804,
180-497
40 Ac.
NW 1/4 of SE 1/4

40 Ac.
SW 1/4 of SE 1/4

Richard &
Janet Tegmeier
189-13
6.09 Ac.
NE Pt.

Ethel Griffith
154-197, 192-645
Tot. Ac. 70.84

50.84 Ac.
NE Pt.

196-171
37.90 Ac.
E 1/2 NE Pt.

Scott & Kathryn
Martin
Tot. Ac. 117.9

163-714
49.61 Ac.
E 1/2 SE Pt.

196-169
30.39 Ac.
E 1/2 SE Pt.

SEC. 25