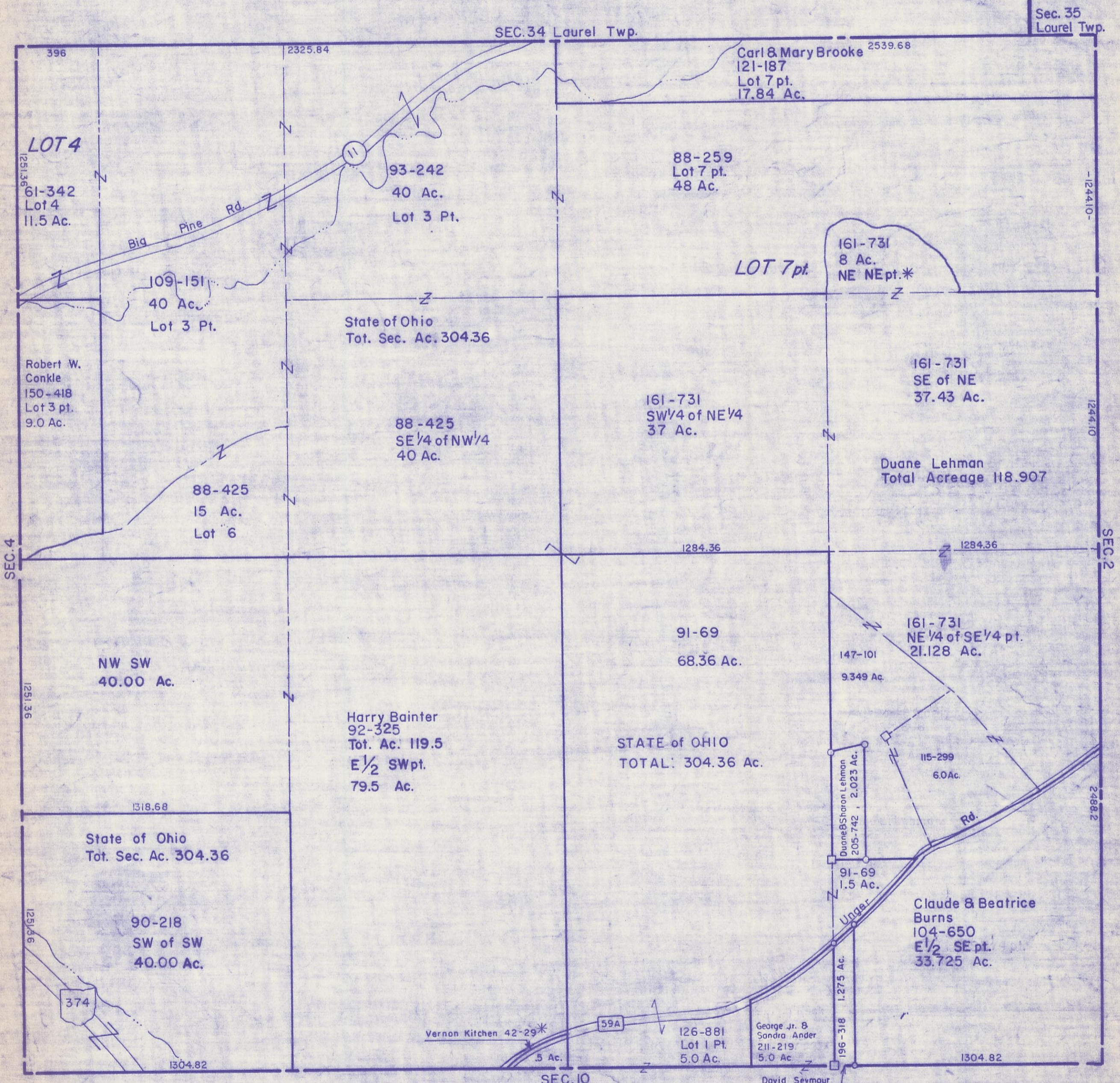


HOCKING COUNTY

Sec. 3 T11 R18

BENTON TWP.

Scale: 1" = 400'



Sec. 35
Laurel Twp.

SEC. 34 Laurel Twp.

SEC. 4

SEC. 2

SEC. 10

SEC. 3

396 2325.84 2539.68
LOT 4
61-342 Lot 4 11.5 Ac.
Big Pine Rd.
93-242 40 Ac. Lot 3 Pt.
88-259 Lot 7 pt. 48 Ac.
109-151 40 Ac. Lot 3 Pt.
State of Ohio Tot. Sec. Ac. 304.36
161-731 8 Ac. NE NE pt.*
LOT 7 pt.
161-731 SE of NE 37.43 Ac.
Duane Lehman Total Acreage 118.907
161-731 SW 1/4 of NE 1/4 37 Ac.
88-425 SE 1/4 of NW 1/4 40 Ac.
1284.36 1284.36
91-69 68.36 Ac.
STATE of OHIO TOTAL: 304.36 Ac.
147-101 9.349 Ac.
161-731 NE 1/4 of SE 1/4 pt. 21.128 Ac.
115-299 6.0 Ac.
Duane & Sharon Lehman 205-742 2.023 Ac.
91-69 1.5 Ac.
Claude & Beatrice Burns 104-650 E 1/2 SE pt. 33.725 Ac.
1251.36 1318.68
State of Ohio Tot. Sec. Ac. 304.36
90-218 SW of SW 40.00 Ac.
1251.36
374
1304.82
Vernon Kitchen 42-29* .5 Ac.
59A
126-881 Lot 1 Pt. 5.0 Ac.
George Jr. & Sandra Ander 211-219 5.0 Ac.
196-318 1.275 Ac.
1304.82
David Seymour