

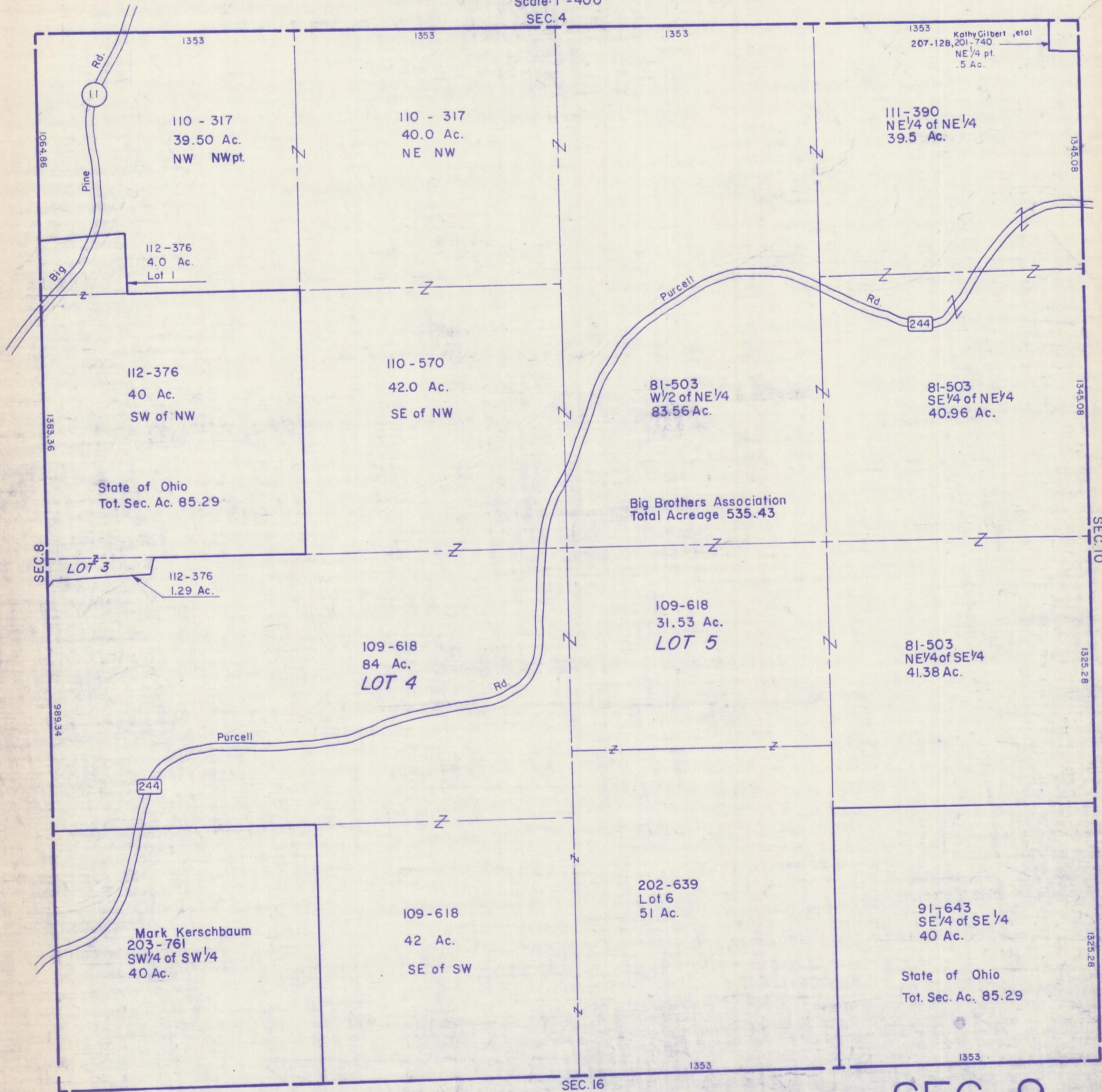
HOCKING COUNTY

Sec. 9 T11 R18

BENTON TWP.

Scale: 1" = 400'

SEC. 4



1353 1353 1353

1064.86 1383.36 989.34 1345.08 1345.08 1325.28 1325.28

110 - 317  
39.50 Ac.  
NW NWpt.

110 - 317  
40.0 Ac.  
NE NW

111 - 390  
NE 1/4 of NE 1/4  
39.5 Ac.

112 - 376  
4.0 Ac.  
Lot 1

112 - 376  
40 Ac.  
SW of NW

110 - 570  
42.0 Ac.  
SE of NW

81 - 503  
W 1/2 of NE 1/4  
83.56 Ac.

81 - 503  
SE 1/4 of NE 1/4  
40.96 Ac.

State of Ohio  
Tot. Sec. Ac. 85.29

112 - 376  
1.29 Ac.  
LOT 3

109 - 618  
84 Ac.  
LOT 4

109 - 618  
31.53 Ac.  
LOT 5

81 - 503  
NE 1/4 of SE 1/4  
41.38 Ac.

202 - 639  
Lot 6  
51 Ac.

109 - 618  
42 Ac.  
SE of SW

91 - 643  
SE 1/4 of SE 1/4  
40 Ac.

State of Ohio  
Tot. Sec. Ac. 85.29

1353

SEC. 8 SEC. 10 SEC. 16

Pine Rd.  
Big Brothers Rd.  
Purcell Rd.  
244

Kathy Gilbert, et al  
207-128, 201-740  
NE 1/4 pt.  
.5 Ac.

SEC. 9