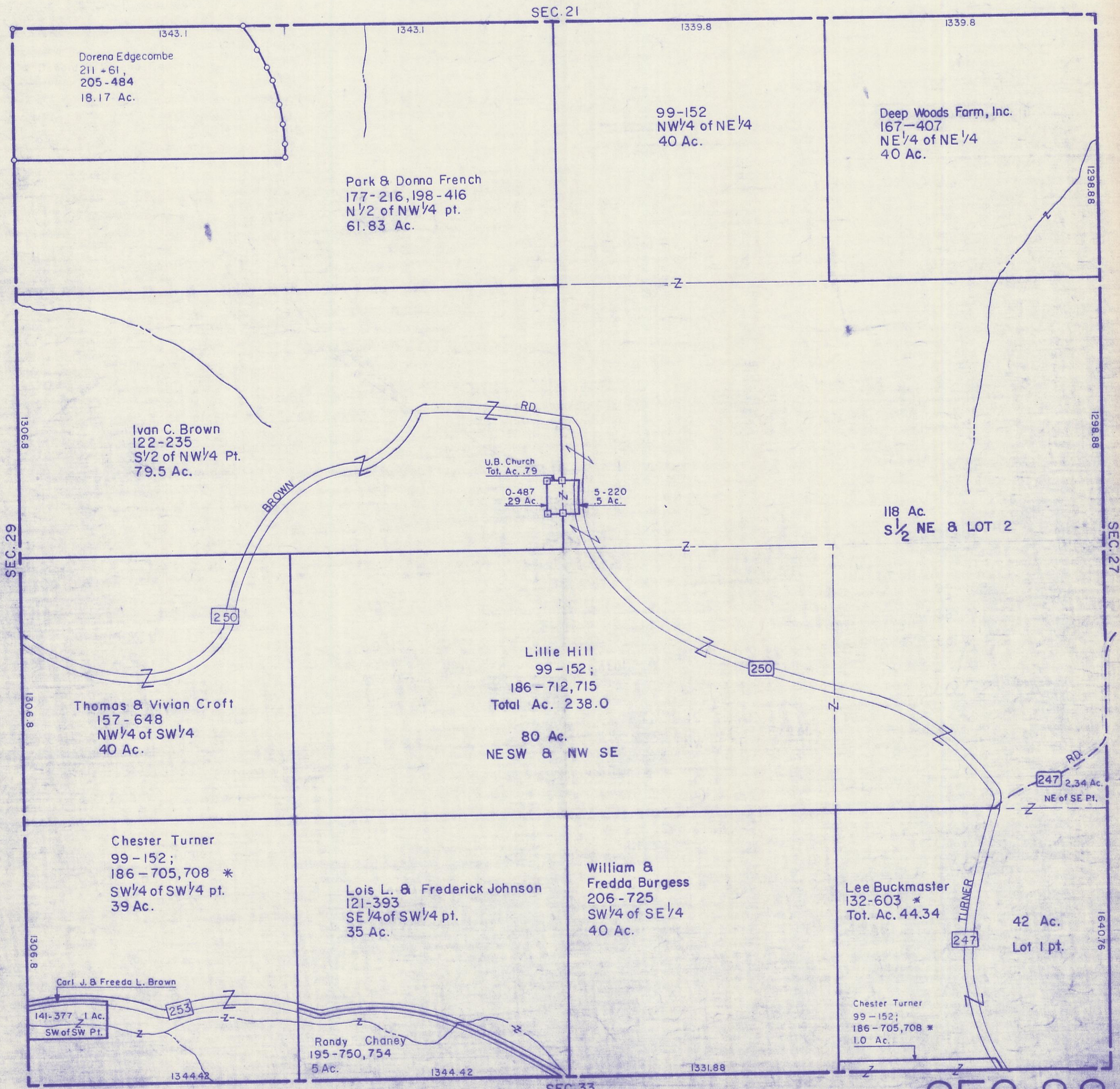


HOCKING COUNTY

Sec. 28 T11 R18

BENTON TWP

Scale: 1"=400'



Dorena Edgecombe
211-61,
205-484
18.17 Ac.

Park & Donna French
177-216, 198-416
N 1/2 of NW 1/4 pt.
61.83 Ac.

99-152
NW 1/4 of NE 1/4
40 Ac.

Deep Woods Farm, Inc.
167-407
NE 1/4 of NE 1/4
40 Ac.

Ivan C. Brown
122-235
S 1/2 of NW 1/4 Pt.
79.5 Ac.

U.B. Church
Tot. Ac. .79

0-487
.29 Ac.

5-220
.5 Ac.

118 Ac.
S 1/2 NE & LOT 2

Thomas & Vivian Croft
157-648
NW 1/4 of SW 1/4
40 Ac.

Lillie Hill
99-152;
186-712, 715
Total Ac. 238.0

80 Ac.
NESW & NW SE

Chester Turner
99-152;
186-705, 708 *
SW 1/4 of SW 1/4 pt.
39 Ac.

Lois L. & Frederick Johnson
121-393
SE 1/4 of SW 1/4 pt.
35 Ac.

William &
Fredda Burgess
206-725
SW 1/4 of SE 1/4
40 Ac.

Lee Buckmaster
132-603 *
Tot. Ac. 44.34

42 Ac.
Lot 1 pt.

Carl J. & Freeda L. Brown
141-377 1 Ac.
SW of SW Pt.

Randy Chaney
195-750, 754
5 Ac.

Chester Turner
99-152;
186-705, 708 *
1.0 Ac.

SEC. 28