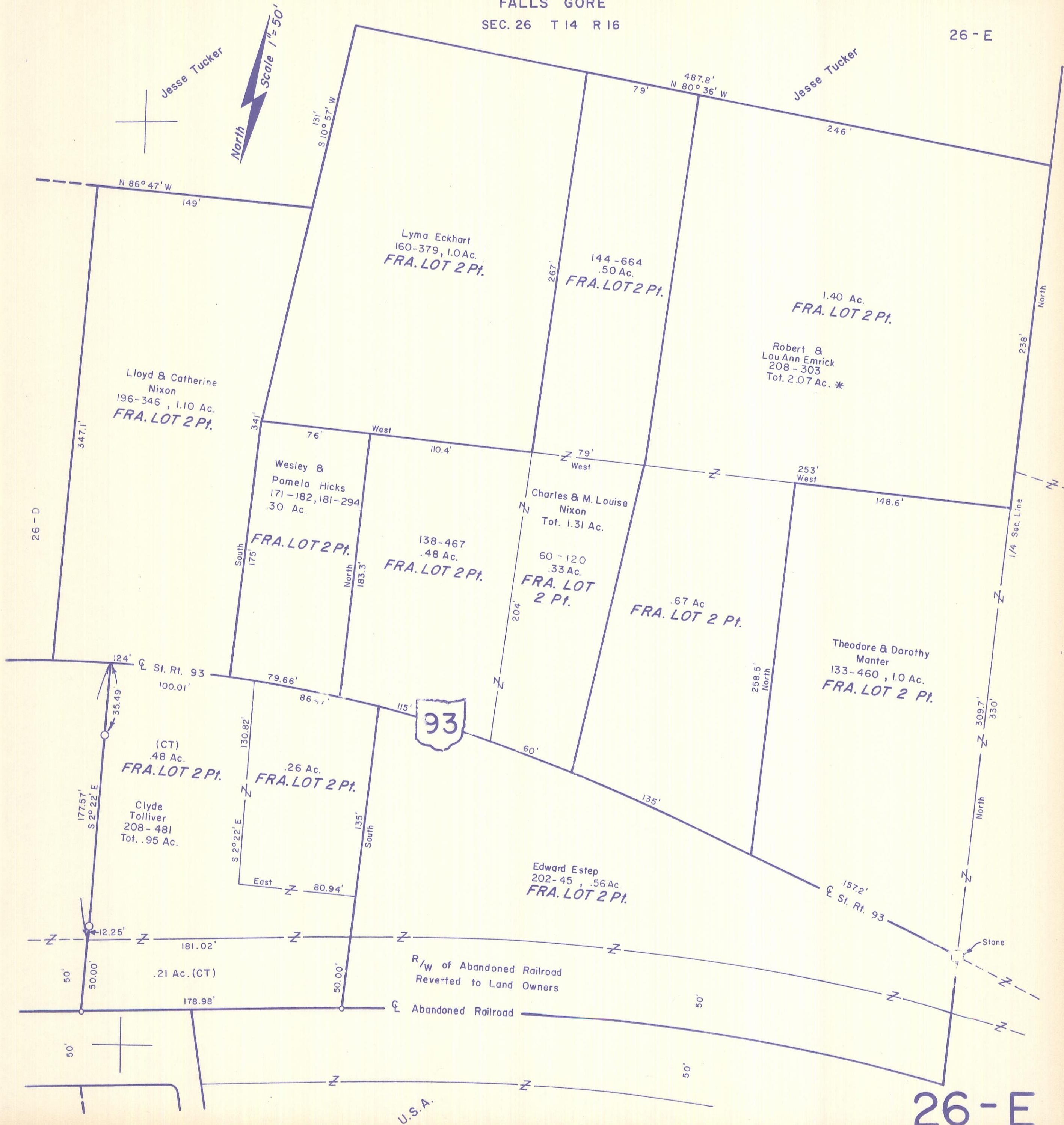


HOCKING COUNTY

FALLS GORE

SEC. 26 T 14 R 16

26 - E



Jesse Tucker



N 86° 47' W

149'

S 10° 57' W

131'

487.8' N 80° 36' W

79'

Jesse Tucker

246'

Lyma Eckhart
160-379, 1.0 Ac.
FRA. LOT 2 Pt.

144-664
.50 Ac.
FRA. LOT 2 Pt.

1.40 Ac.
FRA. LOT 2 Pt.

Robert &
Lou Ann Emrick
208-303
Tot. 2.07 Ac. *

Lloyd & Catherine
Nixon
196-346, 1.10 Ac.
FRA. LOT 2 Pt.

Wesley &
Pamela Hicks
171-182, 181-294
30 Ac.
FRA. LOT 2 Pt.

138-467
.48 Ac.
FRA. LOT 2 Pt.

Charles & M. Louise
Nixon
Tot. 1.31 Ac.

60-120
.33 Ac.
FRA. LOT
2 Pt.

.67 Ac
FRA. LOT 2 Pt.

Theodore & Dorothy
Manter
133-460, 1.0 Ac.
FRA. LOT 2 Pt.

St. Rt. 93
100.01'

(CT)
.48 Ac.
FRA. LOT 2 Pt.

Clyde
Tolliver
208-481
Tot. .95 Ac.

.26 Ac.
FRA. LOT 2 Pt.



Edward Estep
202-45, .56 Ac.
FRA. LOT 2 Pt.

.21 Ac. (CT)

R/W of Abandoned Railroad
Reverted to Land Owners

Abandoned Railroad

26 - E

U.S.A.