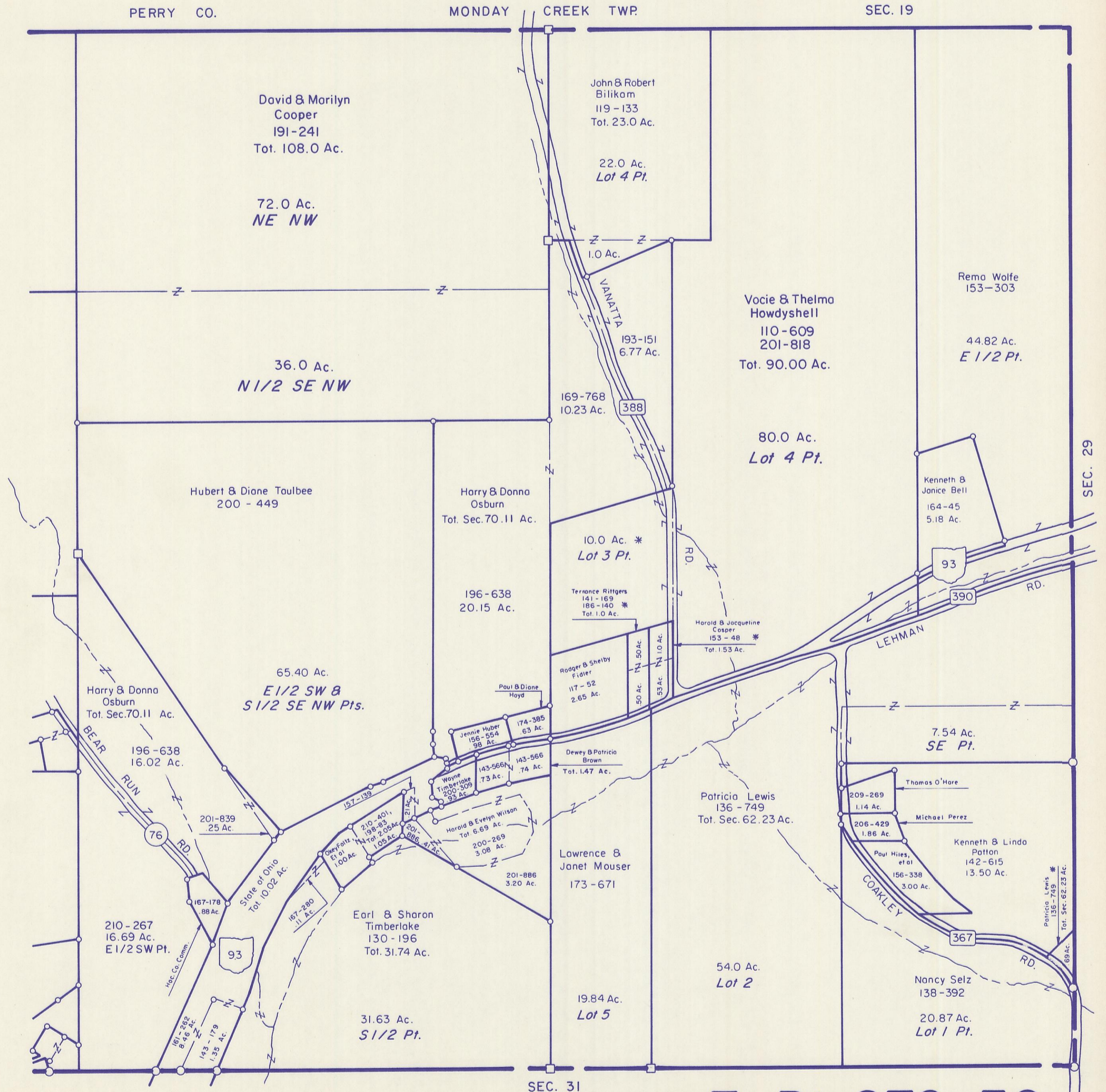


HOCKING COUNTY

FALLS GORE TWP.

E Pt. SEC. 30 T 14 R 16

Scale 1" = 400'



PERRY CO.

MONDAY CREEK TWP.

SEC. 19

David & Marilyn
Cooper
191-241
Tot. 108.0 Ac.

John & Robert
Bilikam
119-133
Tot. 23.0 Ac.

72.0 Ac.
NE NW

22.0 Ac.
Lot 4 Pt.

36.0 Ac.
N 1/2 SE NW

1.0 Ac.

Vocie & Thelma
Howdysshell
110-609
201-818
Tot. 90.00 Ac.

Remo Wolfe
153-303

44.82 Ac.
E 1/2 Pt.

169-768
10.23 Ac.

388

80.0 Ac.
Lot 4 Pt.

Hubert & Diane Taulbee
200-449

Harry & Donna
Osburn
Tot. Sec. 70.11 Ac.

Kenneth &
Janice Bell
164-45
5.18 Ac.

10.0 Ac. *
Lot 3 Pt.

Terrance Rittgers
141-169
186-140 *
Tot. 1.0 Ac.

Harold & Jacqueline
Casper
153-48 *
Tot. 1.53 Ac.

93

390

Harry & Donna
Osburn
Tot. Sec. 70.11 Ac.

65.40 Ac.
E 1/2 SW &
S 1/2 SE NW Pts.

Rodger B. Shelby
Fidler
117-52
2.65 Ac.

Paul & Diane
Hoyd

Jennie Huber
156-554
98 Ac.

174-385
63 Ac.

196-638
16.02 Ac.

143-566
74 Ac.

Dewey & Patricia
Brown
Tot. 1.47 Ac.

7.54 Ac.
SE Pt.

BEAR
RUN
RD.

201-839
.25 Ac.

210-401,
198-83
Tot. 2.05 Ac.

Wayne
Timberlake
200-309
93 Ac.

Harold & Evelyn
Wilson
Tot. 6.69 Ac.

Patricia Lewis
136-749
Tot. Sec. 62.23 Ac.

209-269
1.14 Ac.

206-429
1.86 Ac.

Kenneth & Linda
Patton
142-615
13.50 Ac.

210-267
16.69 Ac.
E 1/2 SW Pt.

167-178
88 Ac.

Earl & Sharon
Timberlake
130-196
Tot. 31.74 Ac.

201-886
41 Ac.

200-269
3.08 Ac.

Lawrence &
Janet Mouser
173-671

54.0 Ac.
Lot 2

Paul Hiles,
et al
156-338
3.00 Ac.

Nancy Selz
138-392

20.87 Ac.
Lot 1 Pt.

161-262
8.46 Ac.

143-179
1.35 Ac.

31.63 Ac.
S 1/2 Pt.

19.84 Ac.
Lot 5

Patricia Lewis
136-749 *
Tot. Sec. 62.23 Ac.

SEC. 29

SEC. 31

E Pt. SEC. 30