

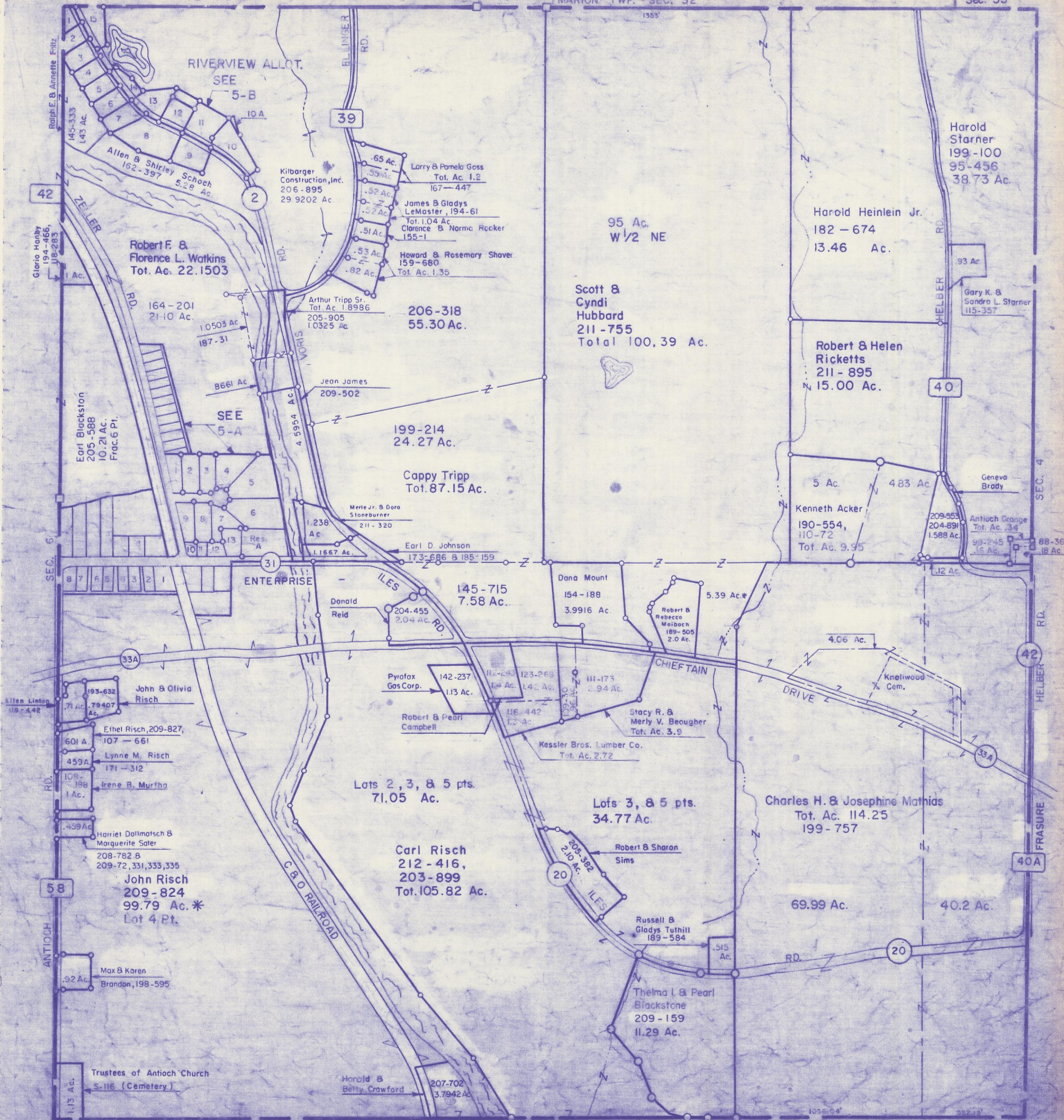
SCALE: 1"=400'

HOCKING COUNTY

FALLS TWP. SEC. 5 T14 R17

MARION TWP. SEC. 32

Sec. 33



RIVERVIEW ALLOT.
SEE 5-B

Allen & Shirley Schoch
162-397
5.28 Ac.

Robert F. &
Florence L. Watkins
Tot. Ac. 22.1503

Earl Blackston
205-588
10.21 Ac.
Frac. 6 Pt.

SEE 5-A

206-318
55.30 Ac.

199-214
24.27 Ac.

Cappy Tripp
Tot. 87.15 Ac.

145-715
7.58 Ac.

Scott &
Cyndi
Hubbard
211-755
Total 100.39 Ac.

Harold Heinlein Jr.
182-674
13.46 Ac.

Harold Starner
199-100
95-456
38.73 Ac.

Robert & Helen
Ricketts
211-895
15.00 Ac.

Kenneth Acker
190-554,
110-72
Tot. Ac. 9.95

Charles H. & Josephine Mathias
Tot. Ac. 114.25
199-757

Lots 2, 3, & 5 pts.
71.05 Ac.

Lots 3, & 5 pts.
34.77 Ac.

Carl Risch
212-416,
203-899
Tot. 105.82 Ac.

69.99 Ac.

40.2 Ac.

John Risch
209-824
99.79 Ac. *
Lot 4 Pt.

Max & Karen
Brandon, 198-595

Trustees of Antioch Church
S-116 (Cemetery)

Harold &
Betty Crawford
207-702
3.7942 Ac.

SEC. 5