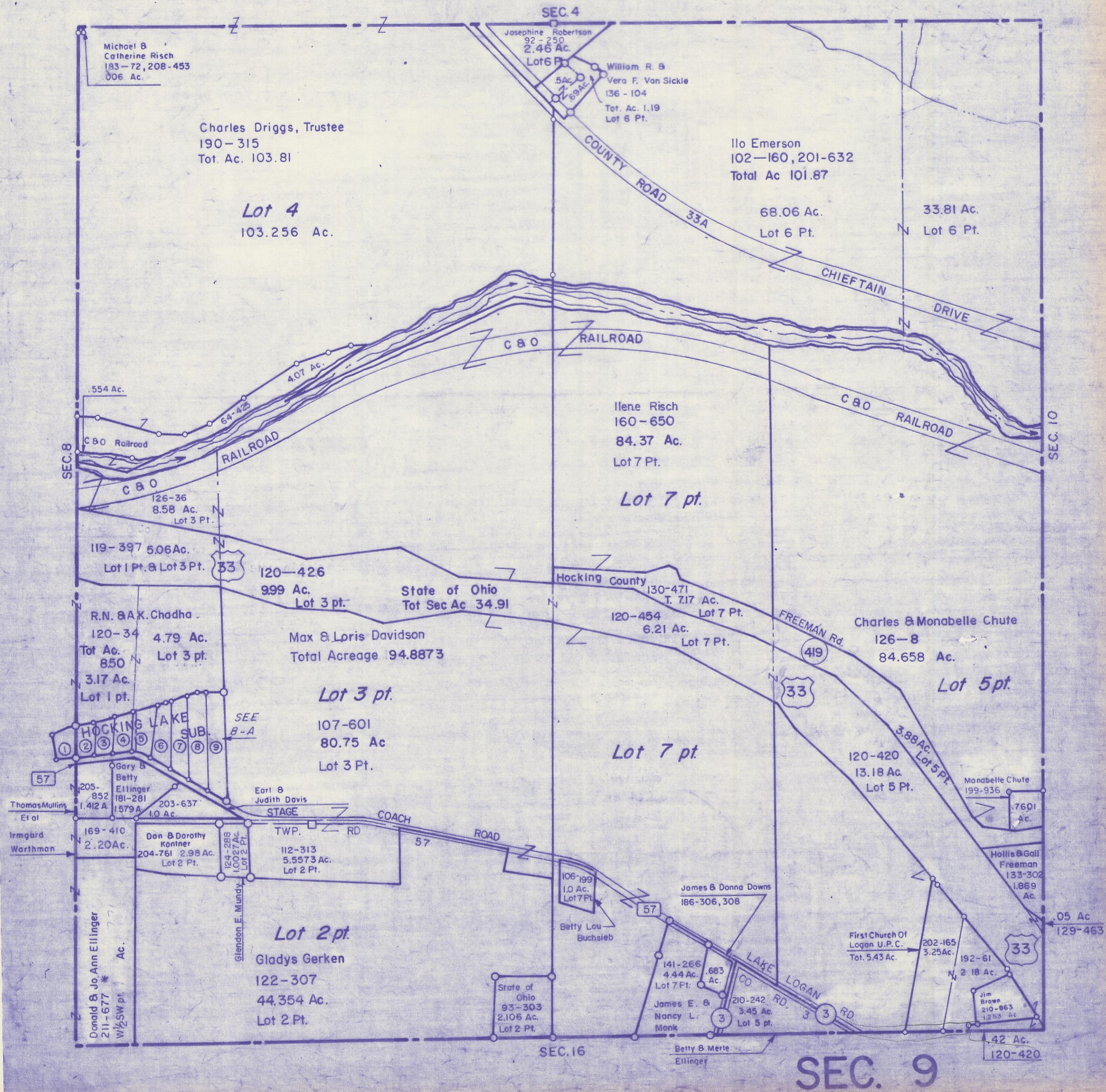


HOCKING COUNTY

Sec. 9 T.14 R.17

FALLS TWP

Scale 1"=400'



Michael B
Catherine Risch
183-72, 208-453
006 Ac.

Charles Driggs, Trustee
190-315
Tot. Ac. 103.81

Lot 4
103.256 Ac.

Josephine Robertson
92-250
2.46 Ac.
Lot 6 Pt.

William R. &
Vera F. Van Sickle
136-104
Tot. Ac. 1.19
Lot 6 Pt.

Ilo Emerson
102-160, 201-632
Total Ac 101.87

68.06 Ac.
Lot 6 Pt.

33.81 Ac.
Lot 6 Pt.

Ilene Risch
160-650
84.37 Ac.
Lot 7 Pt.

Lot 7 pt.

.554 Ac.

C & O Railroad

RAILROAD

C & O RAILROAD

CHIEFTAIN DRIVE

C & O RAILROAD

126-36
8.58 Ac.
Lot 3 Pt.

119-397 5.06 Ac.
Lot 1 Pt. & Lot 3 Pt.

120-426
999 Ac.
Lot 3 pt.

State of Ohio
Tot Sec Ac 34.91

Hocking County

130-471
T. 717 Ac.
Lot 7 Pt.

120-454
6.21 Ac.
Lot 7 Pt.

Charles & Monabelle Chute
126-8
84.658 Ac.

Lot 5 pt.

R.N. & A.K. Chadha
120-34 4.79 Ac.
Tot Ac. 850
3.17 Ac.
Lot 1 pt.

Max & Loris Davidson
Total Acreage 94.8873

Lot 3 pt.

107-601
80.75 Ac
Lot 3 Pt.

Lot 7 pt.

120-420
13.18 Ac.
Lot 5 Pt.

Monabelle Chute
199-936
.7601 Ac.

HOCKING LAKE SUB.

SEE B-A

Gary & Betty Ellinger
205-852 1.412 A
181-281 1.579 A
203-637 1.0 Ac.

Earl & Judith Davis

STAGE

COACH

RD

57

169-410
2.20 Ac.

Don & Dorothy Kontner
204-761 2.98 Ac.
Lot 2 Pt.

112-313
5.5573 Ac.
Lot 2 Pt.

Glendon E. Mundy

Lot 2 pt.
Gladys Gerken
122-307
44.354 Ac.
Lot 2 Pt.

106-199
1.0 Ac.
Lot 7 Pt.

Betty Lou Buchsieb

James & Donna Downs
186-306, 308

141-266
4.44 Ac.
Lot 7 Pt.

James E. & Nancy L. Monk

.683 Ac.

210-242
3.45 Ac.
Lot 5 pt.

Betty B. Merle Ellinger

First Church Of Logan U.P.C.
Tot. 5.43 Ac.

202-165
3.25 Ac.

192-61
2.18 Ac.

Jim Brown
210-863
1.253 Ac.

.42 Ac.
120-420

.05 Ac
129-463

SEC. 16

SEC. 9