

HOCKING COUNTY

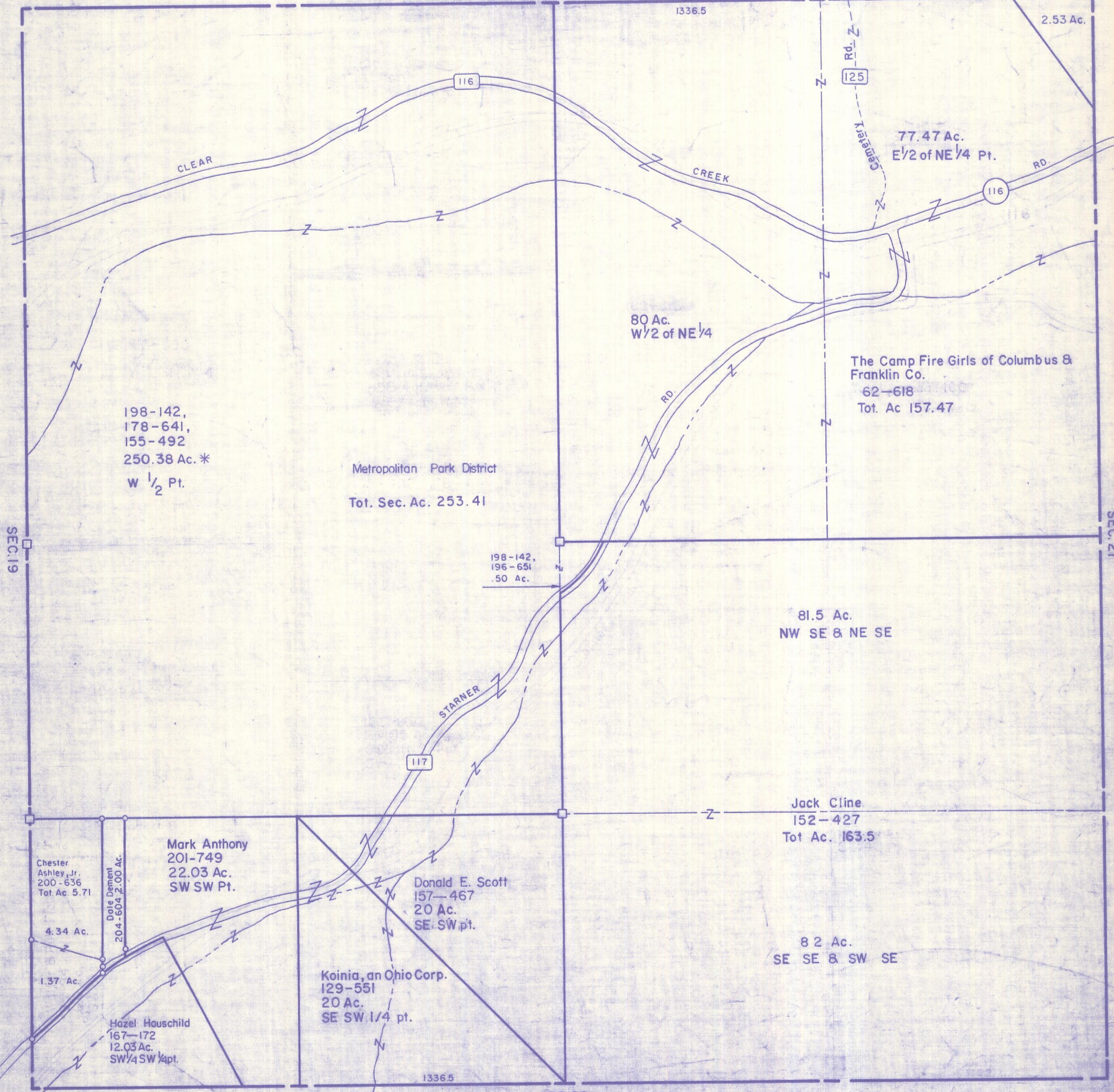
SEC. 20 T13 R18

GOOD HOPE TWP

Scale: 1" = 400'

Metropolitan Park District 155-492, 198-142  
178-641, Tot. Sec. Ac. 253.41 \*

SEC. 17



198-142,  
178-641,  
155-492  
250.38 Ac. \*  
W 1/2 Pt.

Metropolitan Park District  
Tot. Sec. Ac. 253.41

198-142,  
196-651  
.50 Ac.

81.5 Ac.  
NW SE & NE SE

Jack Cline  
152-427  
Tot. Ac. 163.5

Chester  
Ashley, Jr.  
200-636  
Tot. Ac. 5.71

4.34 Ac.

1.37 Ac.

Hazel Hauschild  
167-172  
12.03 Ac.  
SW 1/4 SW 1/4 pt.

Mark Anthony  
201-749  
22.03 Ac.  
SW SW Pt.

Donald E. Scott  
157-467  
20 Ac.  
SE SW pt.

Koinia, an Ohio Corp.  
129-551  
20 Ac.  
SE SW 1/4 pt.

82 Ac.  
SE SE & SW SE

1336.5

SEC. 29

SEC. 20