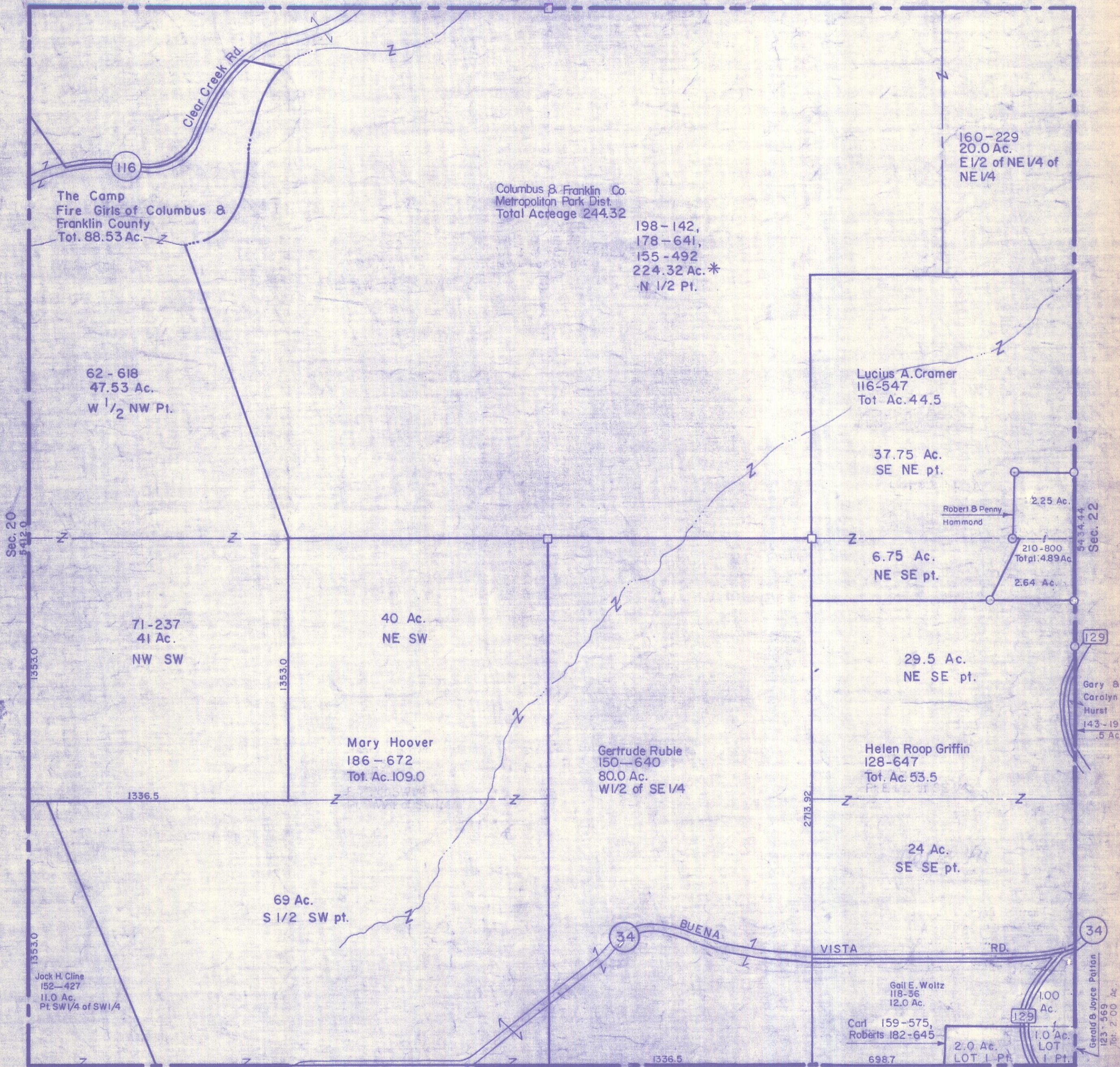


HOCKING COUNTY

Sec. 21 T13 R18
GOOD HOPE TWP.
Scale=1"=400'

Sec. 16



The Camp
Fire Girls of Columbus &
Franklin County
Tot. 88.53 Ac.

Columbus & Franklin Co.
Metropolitan Park Dist.
Total Acreage 244.32

198-142,
178-641,
155-492
224.32 Ac.*
N 1/2 Pt.

160-229
20.0 Ac.
E 1/2 of NE 1/4 of
NE 1/4

62-618
47.53 Ac.
W 1/2 NW Pt.

Lucius A. Cramer
116-547
Tot. Ac. 44.5

37.75 Ac.
SE NE pt.

2.25 Ac.
210-800
Tot. 4.89 Ac.
2.64 Ac.

6.75 Ac.
NE SE pt.

71-237
41 Ac.
NW SW

40 Ac.
NE SW

Mary Hoover
186-672
Tot. Ac. 109.0

Gertrude Ruble
150-640
80.0 Ac.
W 1/2 of SE 1/4

Helen Roop Griffin
128-647
Tot. Ac. 53.5

29.5 Ac.
NE SE pt.

24 Ac.
SE SE pt.

69 Ac.
S 1/2 SW pt.

Jack H. Cline
152-427
11.0 Ac.
Pt. SW 1/4 of SW 1/4

Gail E. Woltz
118-56
12.0 Ac.

Carl Roberts
159-575,
182-645
698.7

2.0 Ac.
LOT 1 Pt.
1.0 Ac.
LOT 1 Pt.

Gary & Carolyn
Hurst
143-19
.5 Ac.

Gerald & Joyce Patton
123-569
Tot. 2.00 Ac.

Sec. 21