

HOCKING COUNTY

Sec. 22 T13 R18

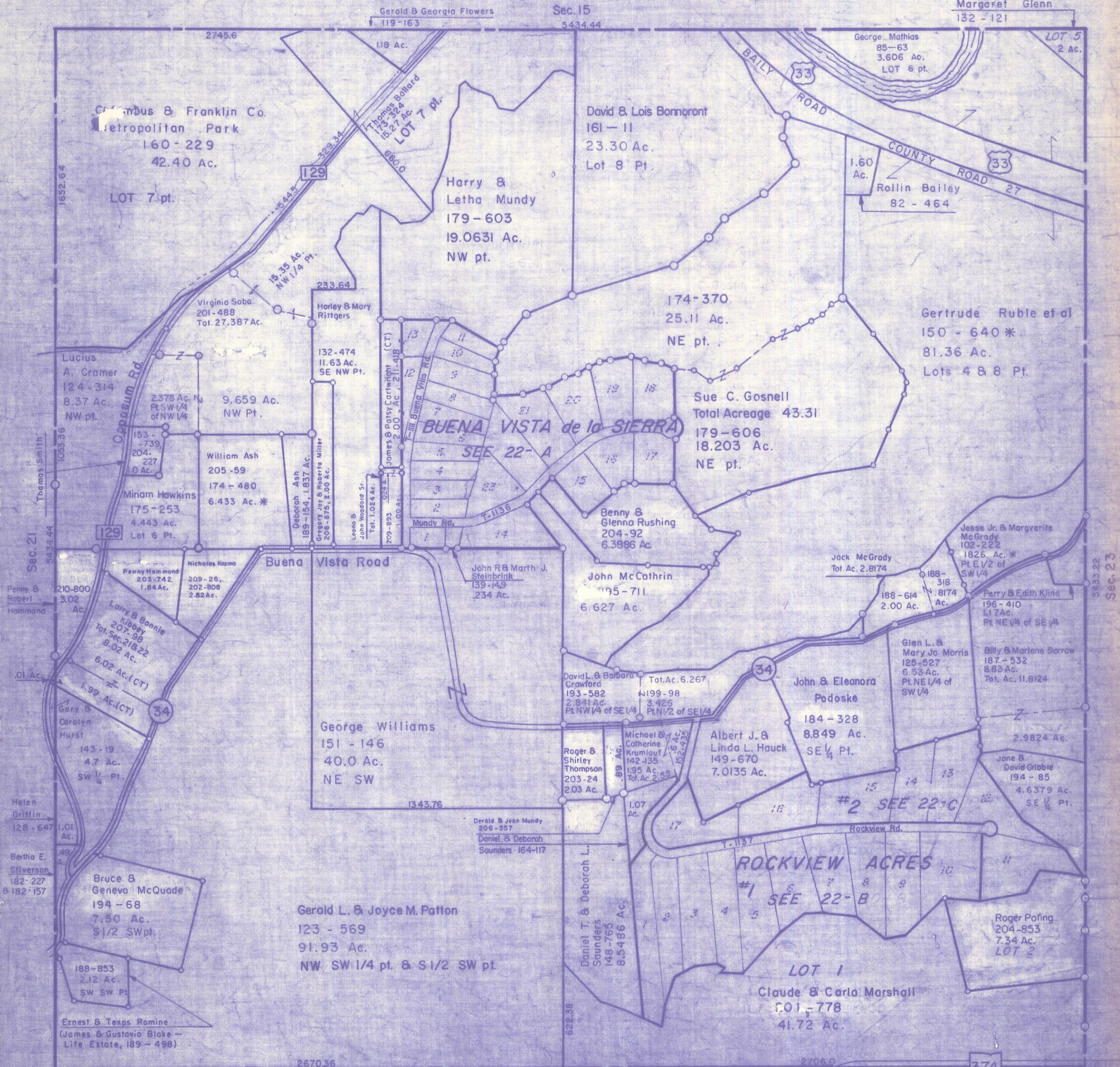
GOOD HOPE TWP.

Scale=1"=400'

Sec. 15

Margaret Glenn

132-121



Columbus & Franklin Co.
Metropolitan Park
160-229
42.40 Ac.

David & Lois Bomeront
161-11
23.30 Ac.
Lot 8 Pt.

Harry & Letha Mundy
179-603
19.0631 Ac.
NW pt.

George Mathias
85-63
3.606 Ac.
LOT 6 pt.

Rollin Bailey
82-464

Lucius
A. Cramer
124-314
8.37 Ac.
NW pt.

Virginia Saba
201-488
Tot. 27,387 Ac.

Horley & Mary
Rittgers

132-474
11.63 Ac.
SE NW Pt.

174-370
25.11 Ac.
NE pt.

Gertrude Ruble et al
150-640 *
81.36 Ac.
Lots 4 & 8 Pt.

Miriam Hawkins
175-253
4.443 Ac.
Lot 6 Pt.

William Ash
205-59
174-480
6.433 Ac. *

Deborah Ash
189-154, 1837 Ac.

Gregory Jay & Roberta Miller
208-875, 2.00 Ac.

Leona B.
John Woodard Sr.
Tot. 1.024 Ac.

James B. Daisy Cartwright (CT)
2.00 Ac., 2.11-418
1.00 Ac.

BUENA VISTA de la SIERRA
SEE 22-A

Sue C. Gosnell
Total Acreage 43.31
179-606
18.203 Ac.
NE pt.

Benny & Glenna Rushing
204-92
6.3886 Ac.

John McCoathrin
195-711
6.627 Ac.

John R & Marth J.
Steinbrink
139-149
234 Ac.

Jack McGrady
Tot. Ac. 2.8174

Jesse Jr. & Marguerite
McGrady
102-222
1826 Ac. *
Pt. E 1/2 of SW 1/4

Perry & Edith Kline
196-410
1.7 Ac.
Pt. NE 1/4 of SE 1/4

Penny Hammond
203-742
1.84 Ac.

Nicholas Kazma
209-26,
202-808
2.82 Ac.

Larry & Bonnie
Kibbey
207-98
Tot. Sec. 21 & 22
8.02 Ac.

6.02 Ac. (CT)

1.99 Ac. (CT)

Gary & Carolyn
Hurst
143-19
4.7 Ac.
SW 1/4 Pt.

David L. & Barbara
Crawford
193-582
2.841 Ac.
Pt. NW 1/4 of SE 1/4

Tot. Ac. 6.267
N199-98
3.426
Pt. N 1/2 of SE 1/4

Roger & Shirley
Thompson
203-24
2.03 Ac.

Michael B.
Catherine
Krumlauf
142-135
1.95 Ac.
Tot. Ac. 2.55

Albert J. & Linda L. Hauck
149-670
7.0135 Ac.

John & Eleanor
Podoske
184-328
8.849 Ac.
SE 1/4 Pt.

Glen L. & Mary Jo Morris
125-527
6.53 Ac.
Pt. NE 1/4 of SW 1/4

Billy & Marlene Sorrow
187-532
8.83 Ac.
Tot. Ac. 11.8124

Jane B.
David Gribble
194-85
4.6379 Ac.
SE 1/4 Pt.

George Williams
151-146
40.0 Ac.
NE SW

Derald & Jean Mundy
206-357

Daniel & Deborah
Saunders 164-117

Daniel T. & Deborah L.
Saunders
148-765
8.5486 Ac.

ROCKVIEW ACRES
#1 SEE 22-B

#2 SEE 22-C

Roger Poffing
204-853
7.34 Ac.
LOT 2

Gerald L. & Joyce M. Patton
123-569
91.93 Ac.
NW SW 1/4 pt. & S 1/2 SW pt.

Bruce & Geneva McQuade
194-68
7.50 Ac.
S 1/2 SW pt.

188-853
2.12 Ac.
SW SW Pt.

Ernest & Texas Romine
(James & Gustavo Blake -
Life Estate, 189-498)

LOT 1
Claude & Carla Marshall
101-778
41.72 Ac.

Sec. 22