

HOCKING COUNTY

Sec. 12 T13 R16

GREEN TWP.

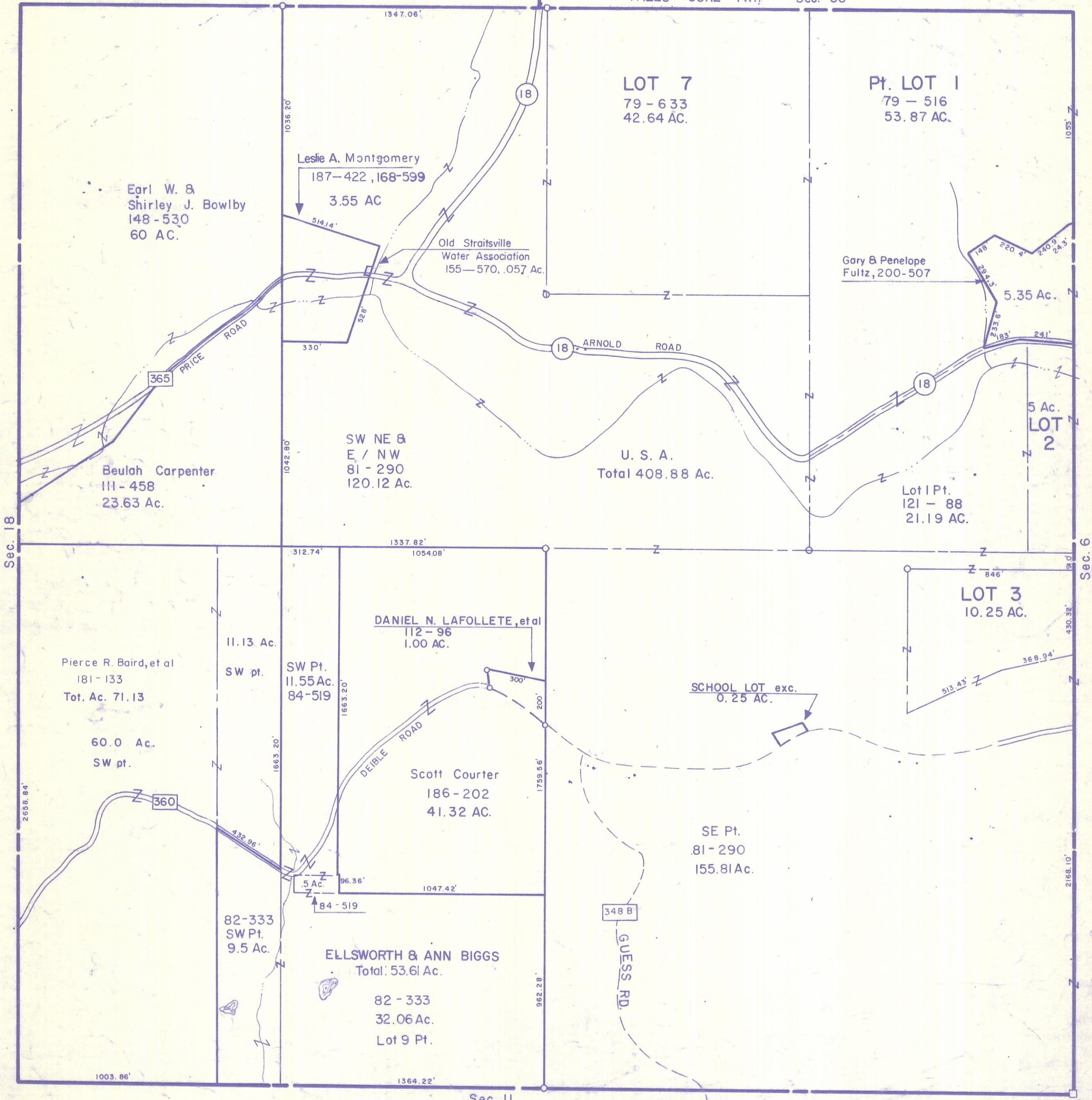
Scale 1" = 400'

FALLS GORE TWP.

Sec. 34

FALLS GORE TWP.

Sec. 35



Earl W. & Shirley J. Bowlby  
148-530  
60 AC.

Leslie A. Montgomery  
187-422, 168-599  
3.55 AC

Old Straitsville  
Water Association  
155-570, .057 Ac.

Gary & Penelope  
Fultz, 200-507

Beulah Carpenter  
111-458  
23.63 Ac.

SW NE & E / NW  
81-290  
120.12 Ac.

U. S. A.  
Total 408.88 Ac.

Lot 1 Pt.  
121-88  
21.19 AC.

Pierce R. Baird, et al  
181-133  
Tot. Ac. 71.13

60.0 Ac.  
SW pt.

11.13 Ac.  
SW pt.

SW Pt.  
11.55 Ac.  
84-519

DANIEL N. LAFOLLETE, et al  
112-96  
1.00 AC.

Scott Courter  
186-202  
41.32 AC.

SCHOOL LOT exc.  
0.25 AC.

SE Pt.  
81-290  
155.81 Ac.

82-333  
SW Pt.  
9.5 Ac.

ELLSWORTH & ANN BIGGS  
Total: 53.61 Ac.

82-333  
32.06 Ac.  
Lot 9 Pt.

Sec. 12