

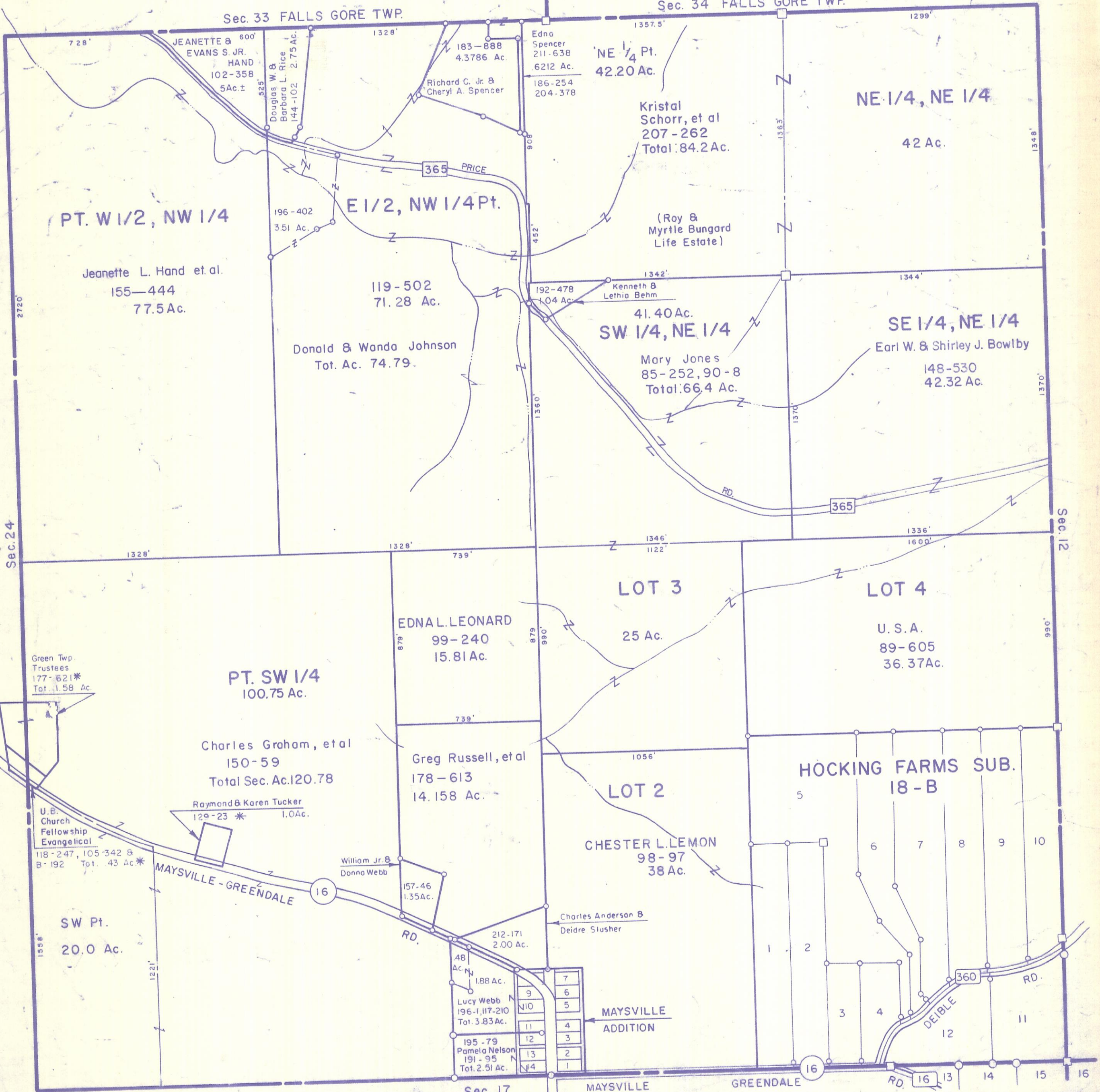
HOCKING COUNTY

Sec. 18 T13 R16

GREEN TWP.
Scale 1" = 400'

Sec. 33 FALLS GORE TWP.

Sec. 34 FALLS GORE TWP.



PT. W 1/2, NW 1/4

Jeanette L. Hand et al.
155-444
77.5 Ac.

E 1/2, NW 1/4 Pt.

119-502
71.28 Ac.
Donald & Wanda Johnson
Tot. Ac. 74.79.

NE 1/4 Pt.
42.20 Ac.

Kristal Schorr, et al
207-262
Total 84.2 Ac.

(Roy & Myrtle Bungard
Life Estate)

NE 1/4, NE 1/4

42 Ac.

SW 1/4, NE 1/4

41.40 Ac.
Mary Jones
85-252, 90-8
Total 66.4 Ac.

SE 1/4, NE 1/4

Earl W. & Shirley J. Bowlby
148-530
42.32 Ac.

PT. SW 1/4
100.75 Ac.

Charles Graham, et al
150-59
Total Sec. Ac. 120.78

Raymond & Karen Tucker
129-23 *
1.0 Ac.

EDNA L. LEONARD
99-240
15.81 Ac.

Greg Russell, et al
178-613
14.158 Ac.

LOT 3

25 Ac.

LOT 4

U. S. A.
89-605
36.37 Ac.

LOT 2

CHESTER L. LEMON
98-97
38 Ac.

HOCKING FARMS SUB.
18-B

5

6 7 8 9 10

1 2 3 4 12 11

Green Twp.
Trustees
177-621*
Tot. 1.58 Ac.

U. B.
Church
Fellowship
Evangelical
118-247, 105-342 &
B-192 Tot. 43 Ac.*

SW Pt.
20.0 Ac.

William Jr. &
Donna Webb
157-46
1.35 Ac.

Lucy Webb
196-1, 117-210
Tot. 3.83 Ac.

195-79
Pamela Nelson
191-95
Tot. 2.51 Ac.

Charles Anderson &
Deidre Slusher
212-171
2.00 Ac.

MAYSVILLE
ADDITION

SEC. 18