

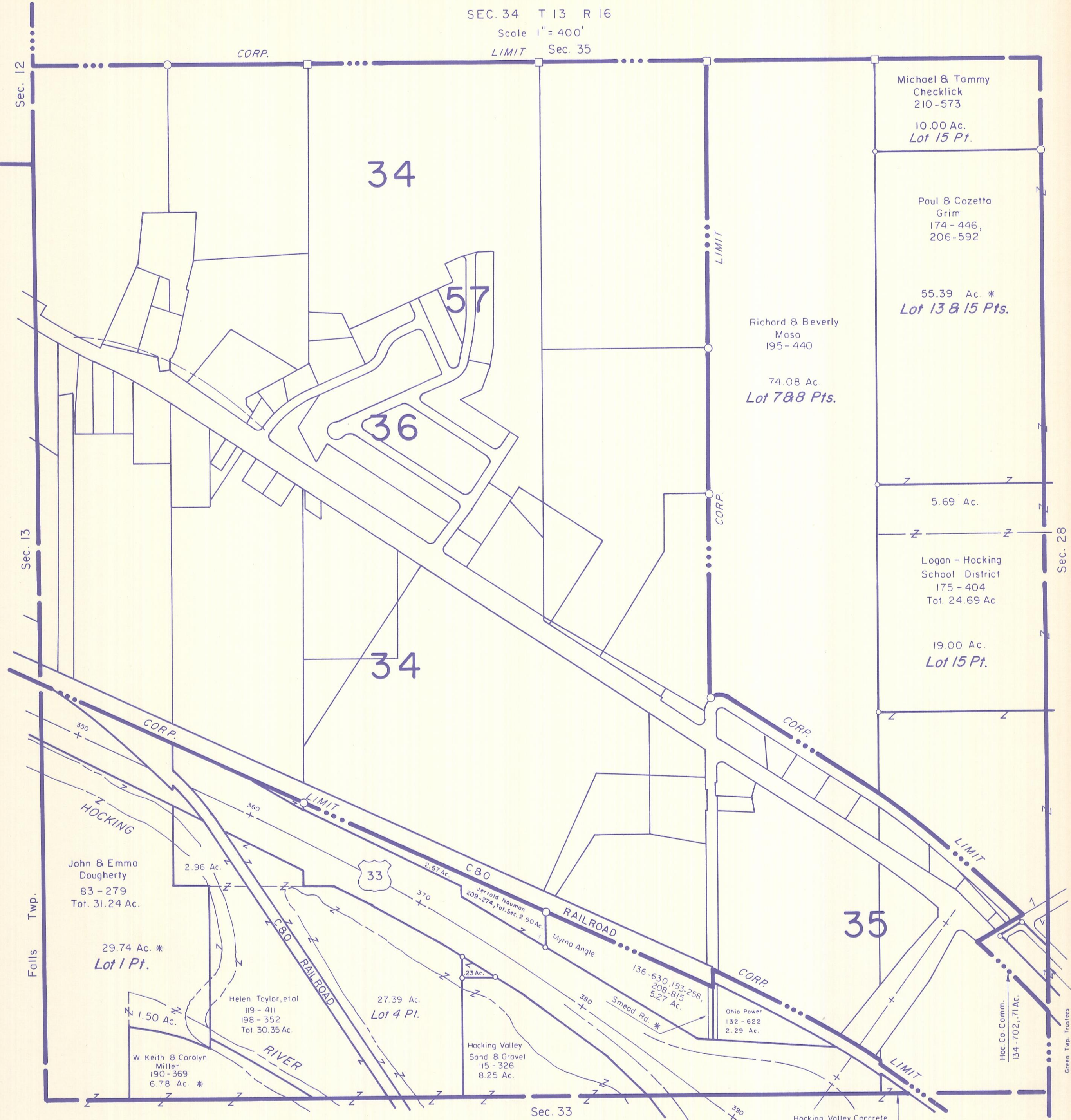
HOCKING COUNTY

GREEN TWP.

SEC. 34 T 13 R 16

Scale 1" = 400'

LIMIT Sec. 35



SEC. 34

Sec. 12

Sec. 13

Falls Twp.

Sec. 33

Sec. 28

Green Twp. Trustees
187-370 *
.74 Ac.

John & Emma
Dougherty
83-279
Tot. 31.24 Ac.

29.74 Ac. *
Lot 1 Pt.

W. Keith & Carolyn
Miller
190-369
6.78 Ac. *

Helen Taylor, et al
119-411
198-352
Tot. 30.35 Ac.

27.39 Ac.
Lot 4 Pt.

Hocking Valley
Sand & Gravel
115-326
8.25 Ac.

Jerrald Nauman
209-274, Tot. Sec. 2.90 Ac.

Myrna Angle
23 Ac.

136-630, 183-258,
208-815
5.27 Ac.

Ohio Power
132-622
2.29 Ac.

Hocking Valley Concrete
124-386, .18 Ac.

Michael & Tammy
Checklick
210-573

10.00 Ac.
Lot 15 Pt.

Paul & Cozetto
Grim
174-446,
206-592

55.39 Ac. *
Lot 13 & 15 Pts.

Richard & Beverly
Masa
195-440

74.08 Ac.
Lot 7 & 8 Pts.

5.69 Ac.

Logan - Hocking
School District
175-404
Tot. 24.69 Ac.

19.00 Ac.
Lot 15 Pt.

HOCKING

RIVER

33

35

34

36

34

57

CORP.

LIMIT

LIMIT

CORP.

CORP.

LIMIT

C&O

RAILROAD

CORP.

LIMIT

LIMIT

Sec. 33

Hocking Valley Concrete
124-386, .18 Ac.