

HOCKING COUNTY

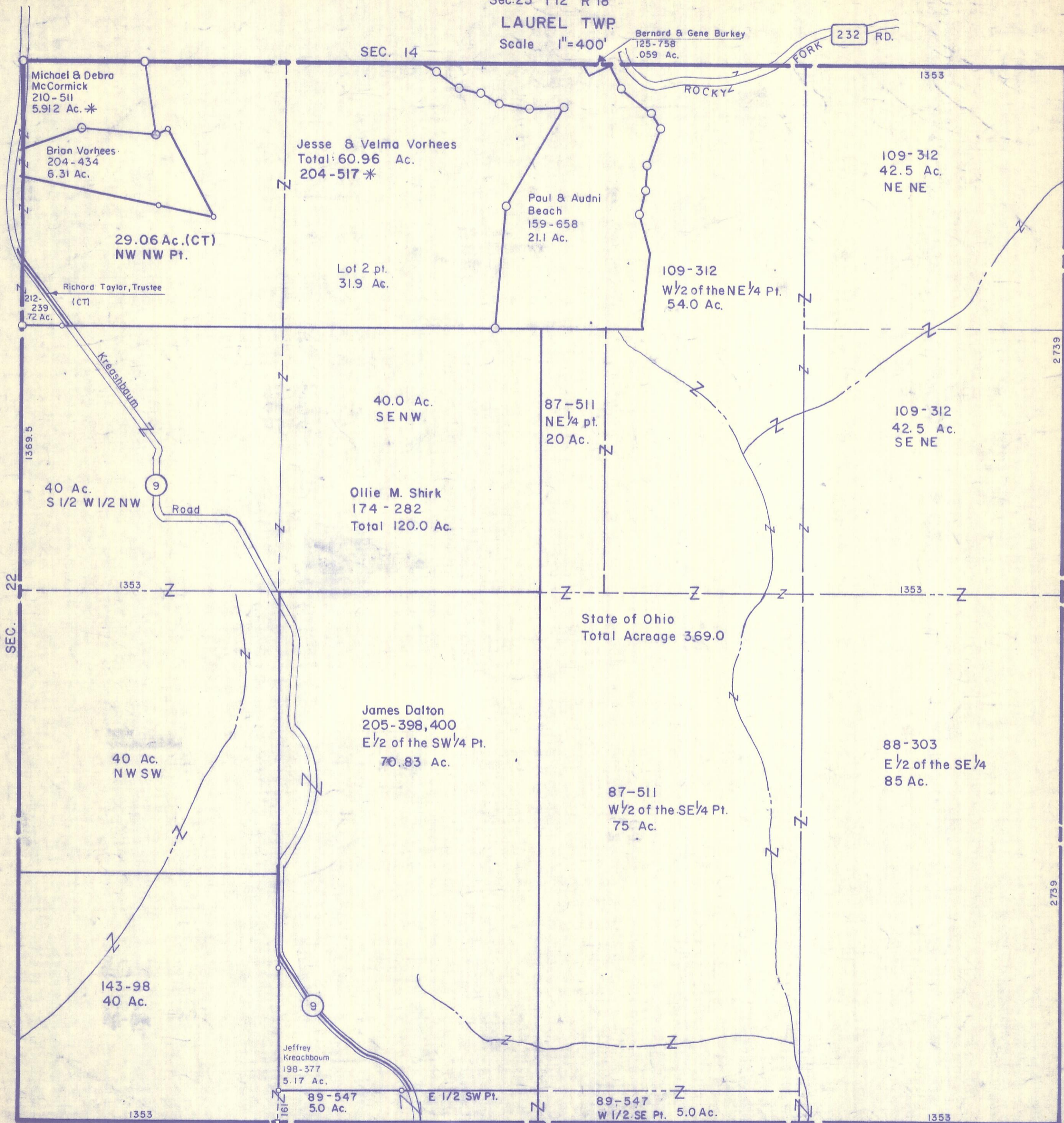
Sec. 23 T12 R 18

LAUREL TWP

Scale 1" = 400'

Bernard & Gene Burkey  
125-758  
.059 Ac.

232 RD.



Michael & Debra  
McCormick  
210-511  
5.912 Ac. \*

Brian Vorhees  
204-434  
6.31 Ac.

29.06 Ac. (CT)  
NW NW Pt.

Richard Taylor, Trustee  
(CT)  
212-  
239  
.72 Ac.

Jesse & Velma Vorhees  
Total: 60.96 Ac.  
204-517 \*

Lot 2 pt.  
31.9 Ac.

Paul & Audni  
Beach  
159-658  
21.1 Ac.

109-312  
W 1/2 of the NE 1/4 Pt.  
54.0 Ac.

109-312  
42.5 Ac.  
NE NE

40.0 Ac.  
SE NW

87-511  
NE 1/4 pt.  
20 Ac.

109-312  
42.5 Ac.  
SE NE

40 Ac.  
S 1/2 W 1/2 NW

Ollie M. Shirk  
174-282  
Total 120.0 Ac.

State of Ohio  
Total Acreage 369.0

40 Ac.  
NW SW

James Dalton  
205-398,400  
E 1/2 of the SW 1/4 Pt.  
70.83 Ac.

87-511  
W 1/2 of the SE 1/4 Pt.  
75 Ac.

88-303  
E 1/2 of the SE 1/4  
85 Ac.

143-98  
40 Ac.

Jeffrey  
Kreachbaum  
198-377  
5.17 Ac.

89-547  
5.0 Ac.  
E 1/2 SW Pt.

89-547  
5.0 Ac.  
W 1/2 SE Pt.

SEC. 23