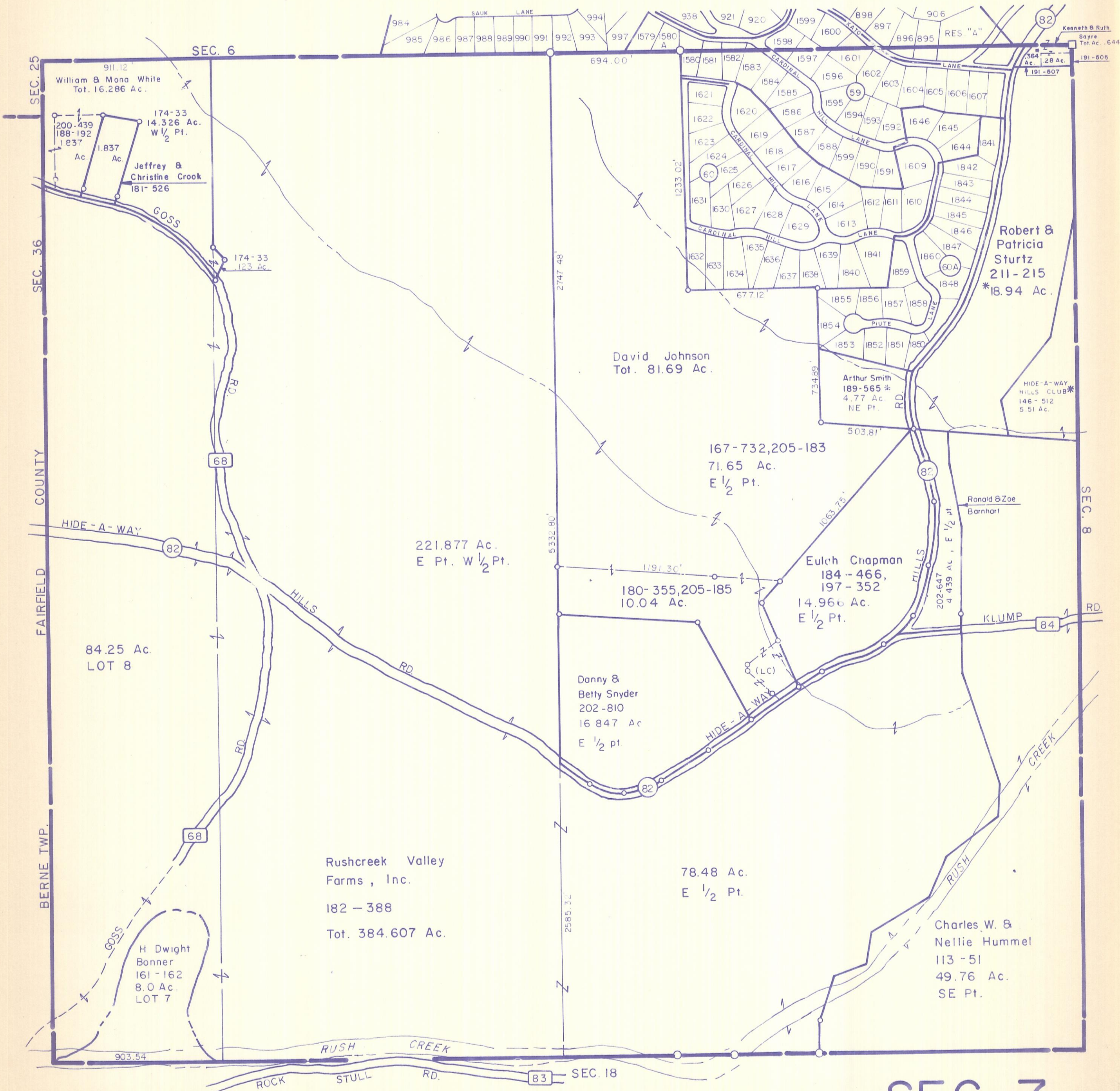


HOCKING COUNTY

MARION TWP.

SEC. 7 T15 R17

Scale 1"=400'



William & Mona White
Tot. 16.286 Ac.
174-33
14.326 Ac.
W 1/2 Pt.
Jeffrey &
Christine Crook
181-526

Robert &
Patricia
Sturtz
211-215
*18.94 Ac.

David Johnson
Tot. 81.69 Ac.

Arthur Smith
189-565 *
4.77 Ac.
NE Pt.

HIDE-A-WAY
HILLS CLUB *
146-512
5.51 Ac.

167-732,205-183
71.65 Ac.
E 1/2 Pt.

221.877 Ac.
E Pt. W 1/2 Pt.

180-355,205-185
10.04 Ac.

Eulah Chapman
184-466,
197-352
14.966 Ac.
E 1/2 Pt.

Danny &
Betty Snyder
202-810
16.847 Ac
E 1/2 pt

Rushcreek Valley
Farms, Inc.
182-388
Tot. 384.607 Ac.

78.48 Ac.
E 1/2 Pt.

Charles W. &
Nellie Hummel
113-51
49.76 Ac.
SE Pt.

H Dwight
Bonner
161-162
8.0 Ac.
LOT 7

SEC. 7