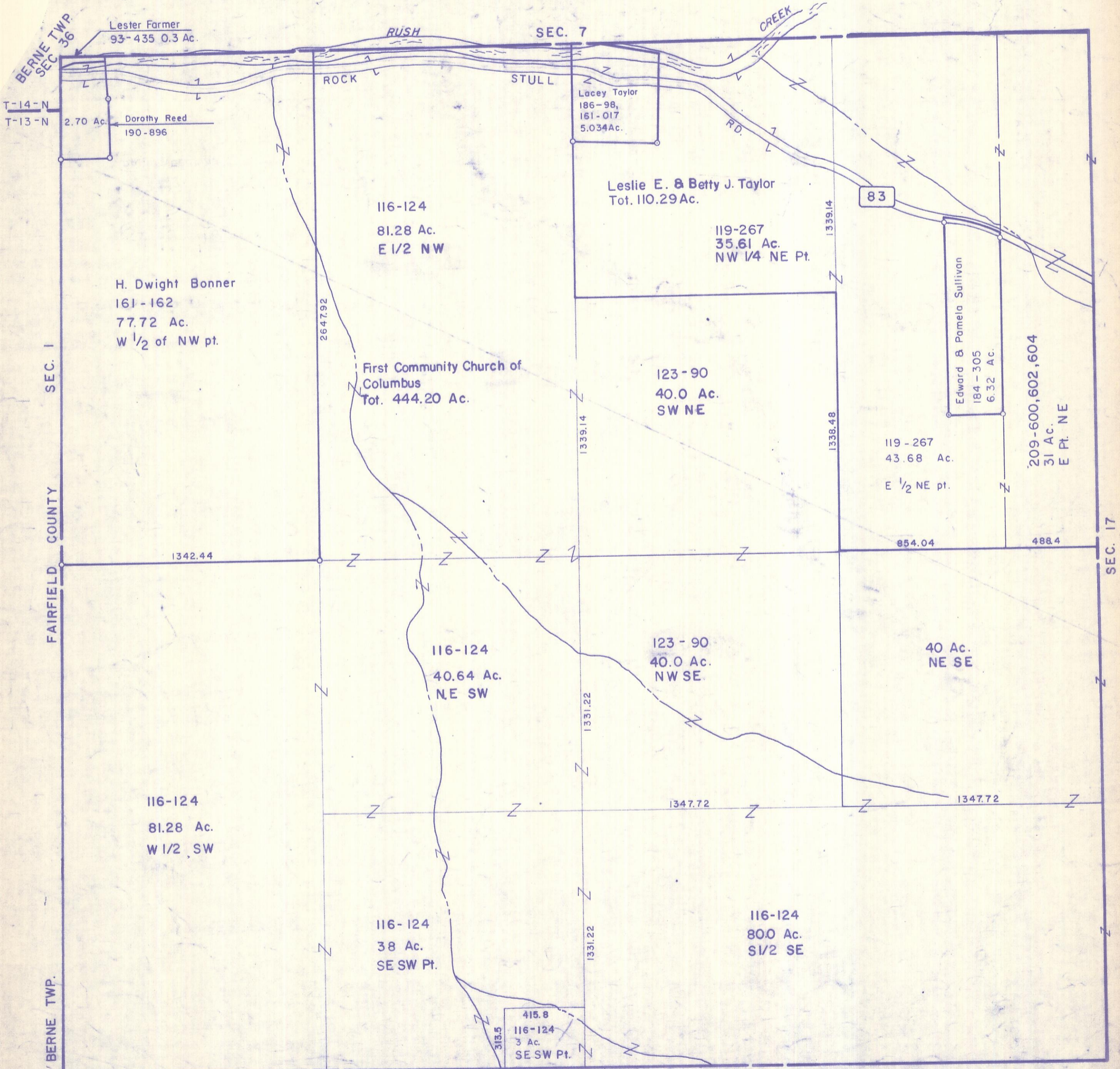


HOCKING COUNTY

SEC. 18 T.15 R.17

MARION TWP.

Scale 1" = 400'



Lester Farmer  
93-435 0.3 Ac.

T-14-N  
T-13-N

2.70 Ac. Dorothy Reed  
190-896

Lacey Taylor  
186-98,  
161-017  
5.034Ac.

Leslie E. & Betty J. Taylor  
Tot. 110.29 Ac.

116-124  
81.28 Ac.  
E 1/2 NW

119-267  
35.61 Ac.  
NW 1/4 NE Pt.

H. Dwight Bonner  
161-162  
77.72 Ac.  
W 1/2 of NW pt.

First Community Church of  
Columbus  
Tot. 444.20 Ac.

123-90  
40.0 Ac.  
SW NE

Edward & Pamela Sullivan  
184-305  
6.32 Ac.

119-267  
43.68 Ac.  
E 1/2 NE pt.

209-600,602,604  
31 Ac.  
E Pt. NE

1342.44

854.04

488.4

116-124  
40.64 Ac.  
NE SW

123-90  
40.0 Ac.  
NW SE

40 Ac.  
NE SE

116-124  
81.28 Ac.  
W 1/2 SW

1347.72

1347.72

116-124  
38 Ac.  
SE SW Pt.

116-124  
800 Ac.  
S 1/2 SE

415.8  
116-124  
3 Ac.  
SE SW Pt.

SEC. 19

SEC 18