

HOCKING COUNTY

PERRY TWP.

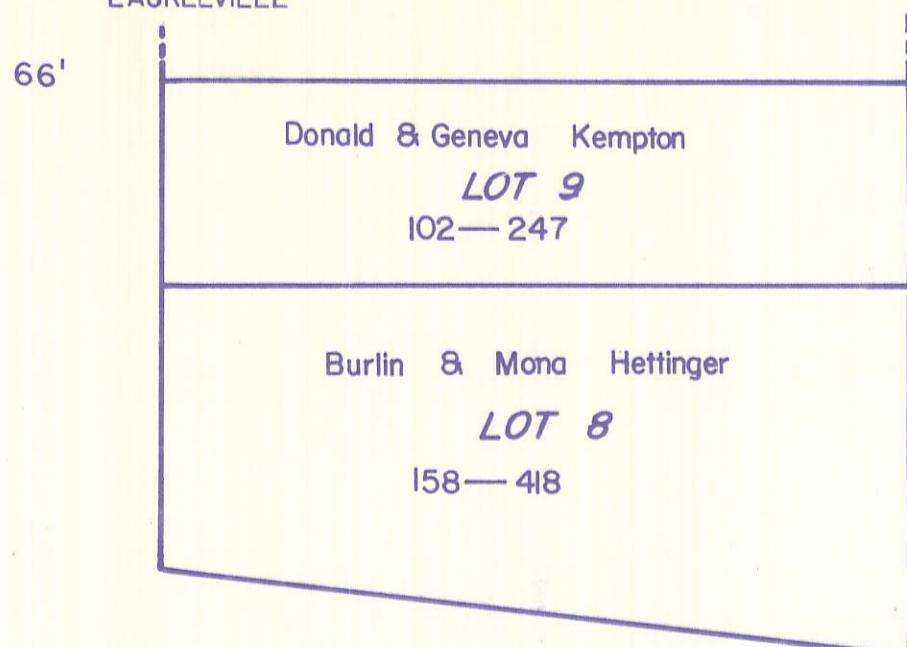
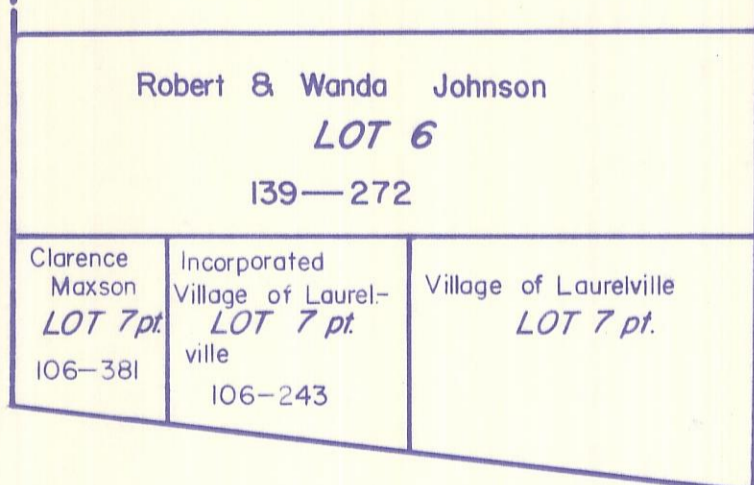
SEC. 31 T 12 R 19

LAURELVILLE

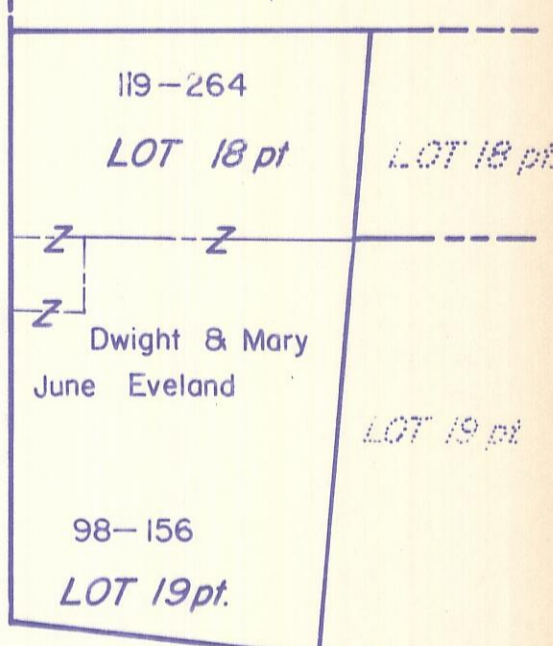
31-G

SEE PAGE 31-E

LOGAN AVENUE



BLACK HAWK AVE.

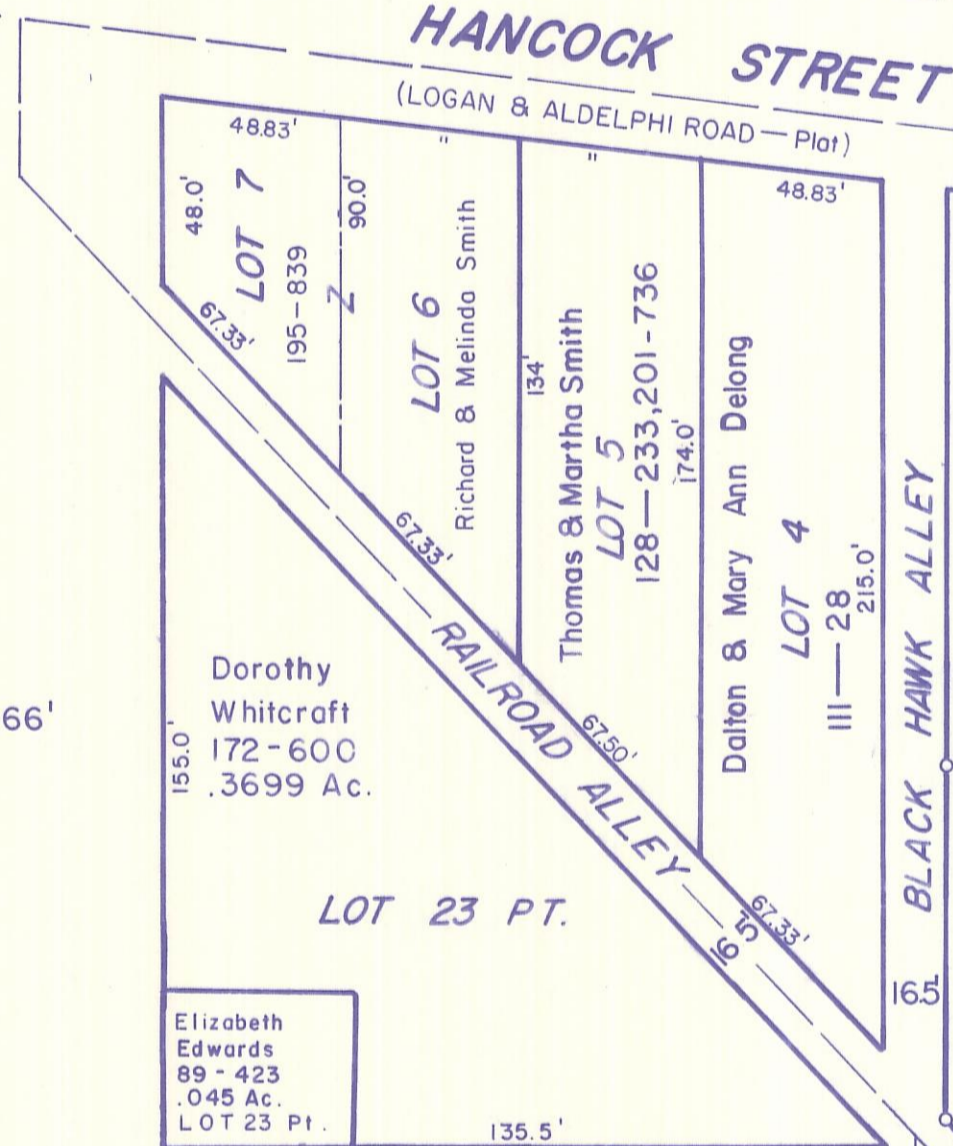
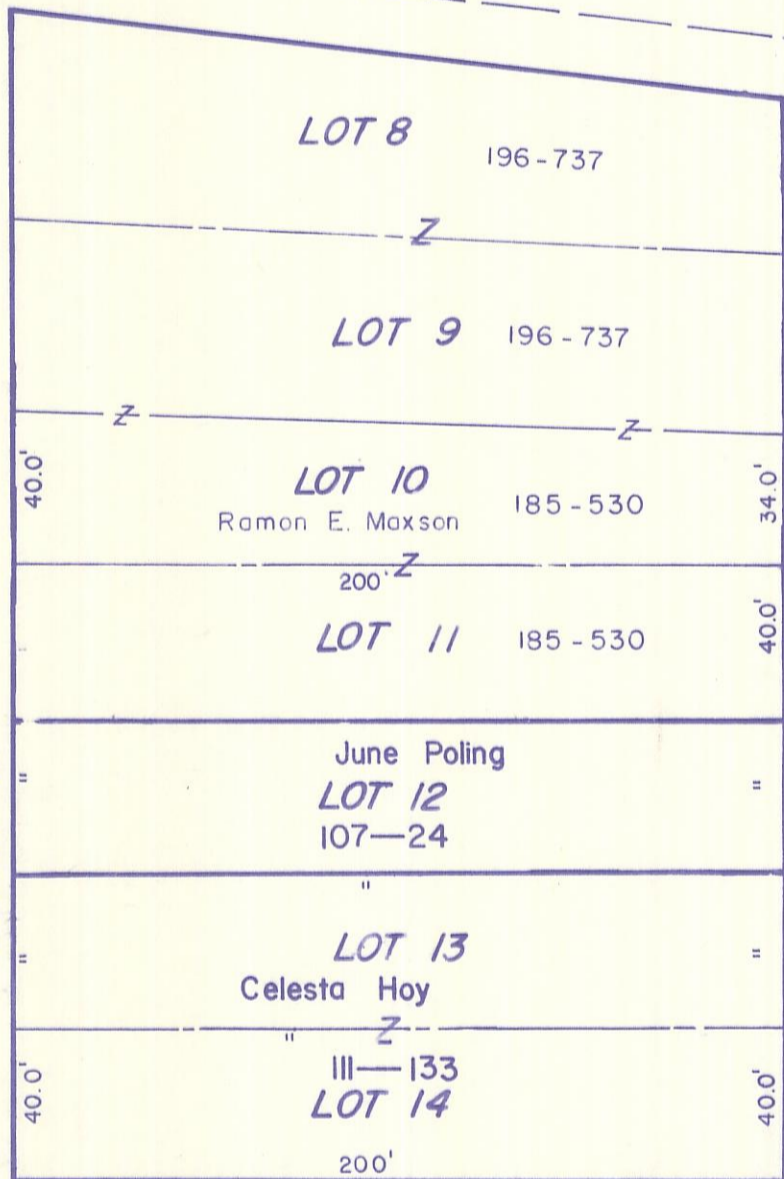


ALLEN STROUSE 1st
MOWERY'S 2nd

SECTION 36
SECTION 31

SALTCREEK TWP.
PERRY TWP.

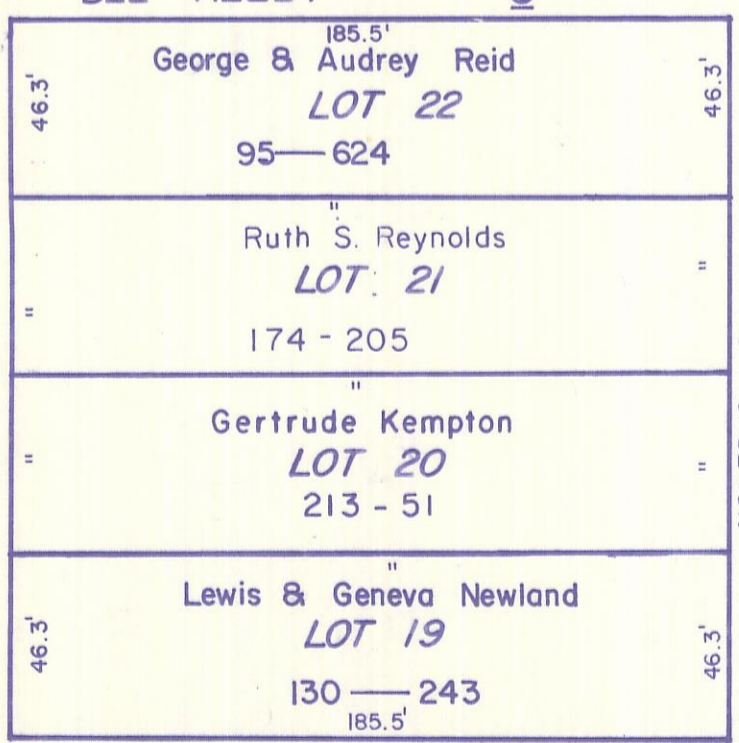
PICKAWAY COUNTY
HOCKING COUNTY



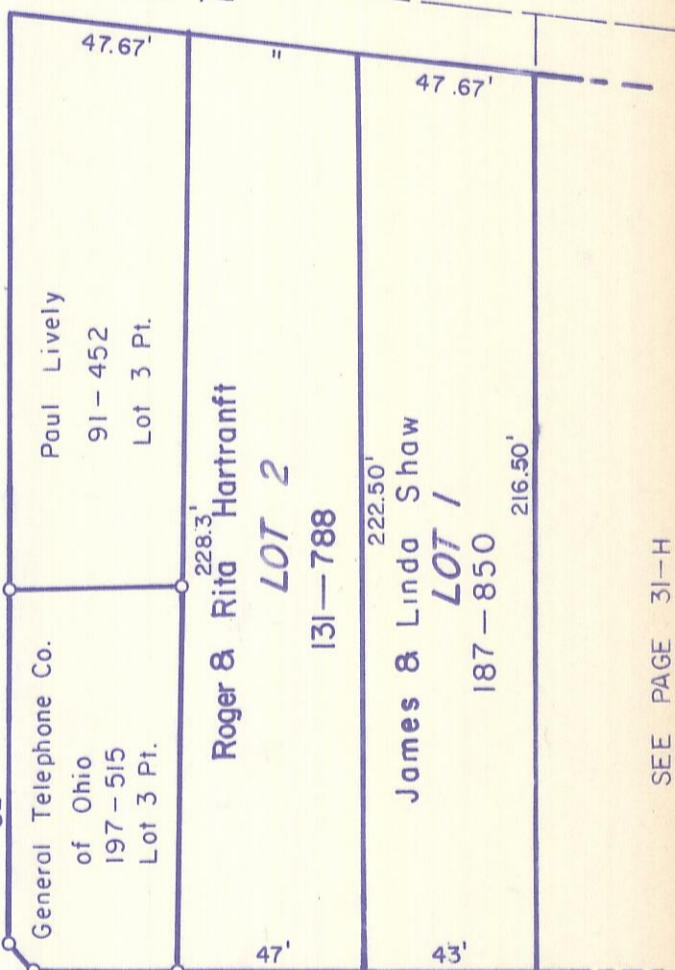
HANCOCK STREET
(LOGAN & ALDELPHI ROAD - Plat)

ALLEN STROUSE 1st
MOWERY'S 1st

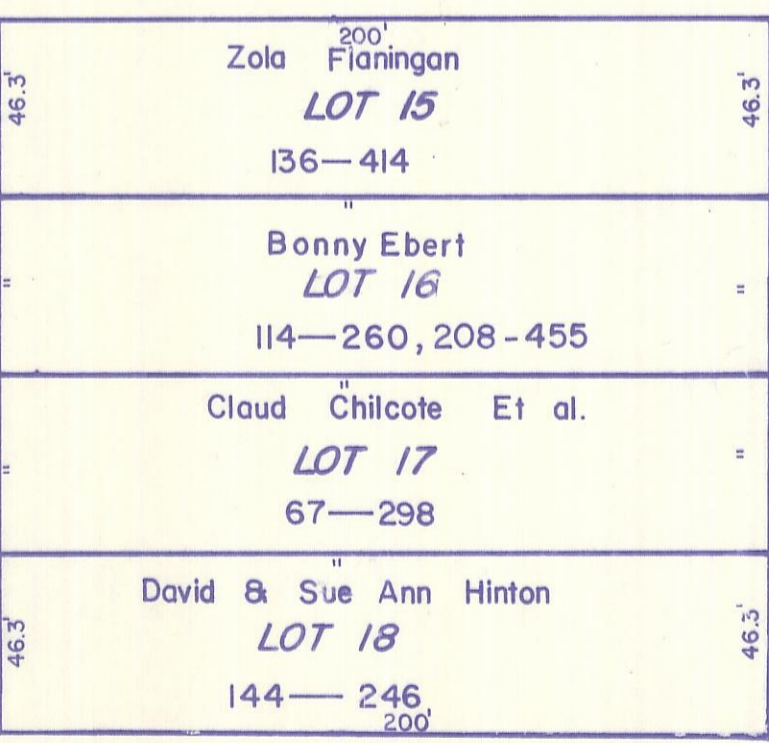
MAIN STREET
(SOUTH MILL STREET - Plat)



BLACK HAWK ALLEY



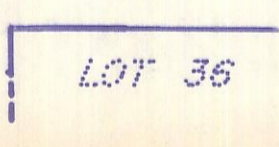
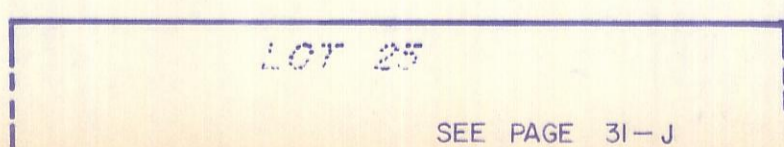
BEE ALLEY



MOWERY 2nd
MOWERY 3rd

SHERMAN STREET

MOWERY 1st & 2nd Pt., ALLEN STROUSE 1st Pt.



LAURELVILLE 31-G

SEE PAGE 31-J

SEE PAGE 31-H

NORTH
1"=50'