

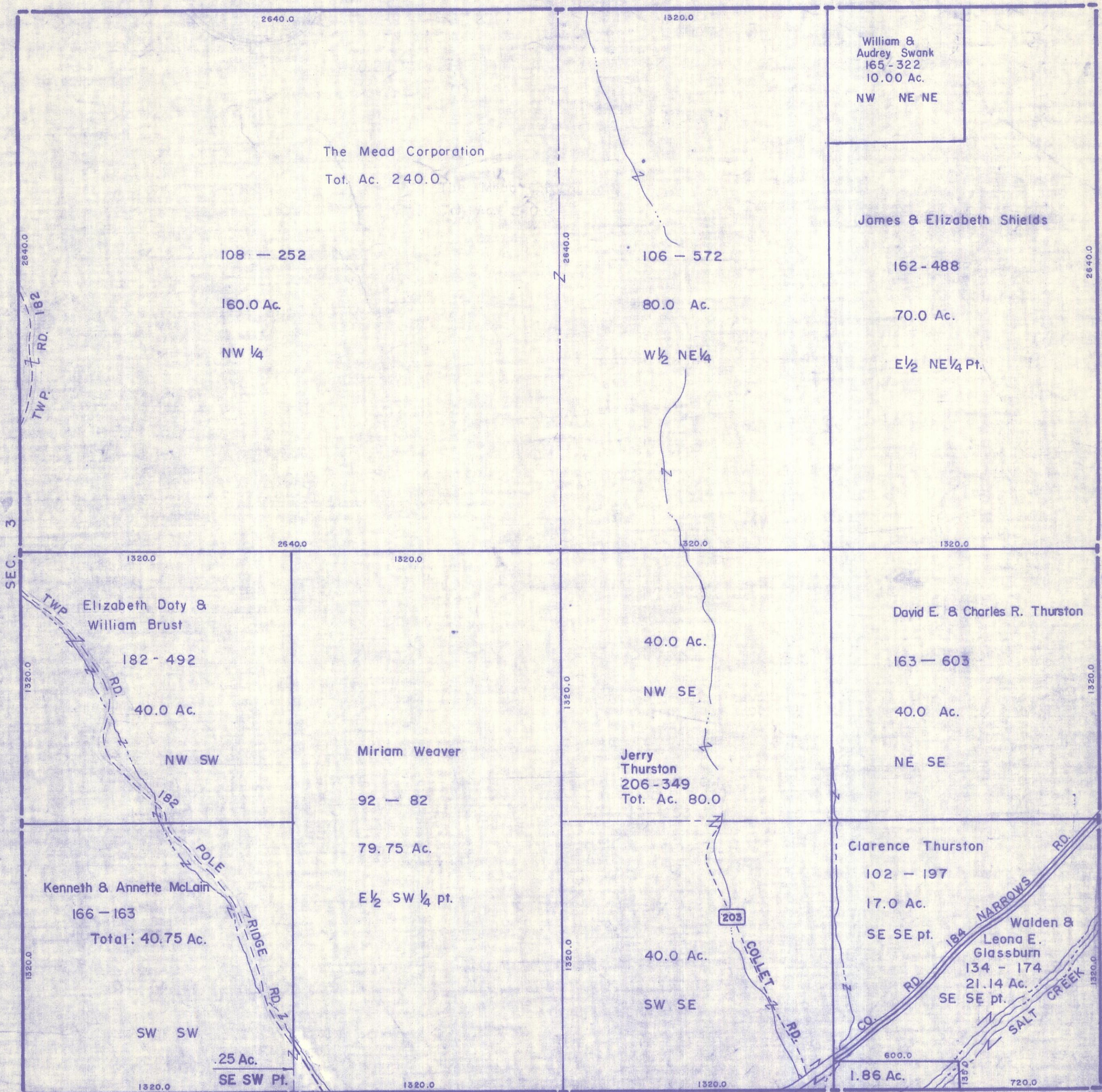
HOCKING COUNTY

Sec. 2 T10 R19

SALT CREEK TWP.

Scale 1" = 400'

SEC. 35



William &
Audrey Swank
165 - 322
10.00 Ac.
NW NE NE

The Mead Corporation
Tot. Ac. 240.0

James & Elizabeth Shields

162 - 488

70.0 Ac.

E 1/2 NE 1/4 Pt.

108 - 252

160.0 Ac.

NW 1/4

106 - 572

80.0 Ac.

W 1/2 NE 1/4

David E. & Charles R. Thurston

163 - 603

40.0 Ac.

NE SE

Elizabeth Doty &
William Brust

182 - 492

40.0 Ac.

NW SW

Miriam Weaver

92 - 82

79.75 Ac.

E 1/2 SW 1/4 pt.

Kenneth & Annette McLain

166 - 163

Total: 40.75 Ac.

SW SW

.25 Ac.

SE SW Pt.

Jerry
Thurston
206 - 349
Tot. Ac. 80.0

40.0 Ac.

NW SE

Clarence Thurston

102 - 197

17.0 Ac.

SE SE pt.

Walden &
Leona E.
Glassburn

134 - 174

21.14 Ac.

SE SE pt.

1.86 Ac.

SEC. 11 Eagle Twp.

Vinton Co.

Charles & Jane Volimer, et al
182 - 199

SEC. 2
BOTTOM TIER