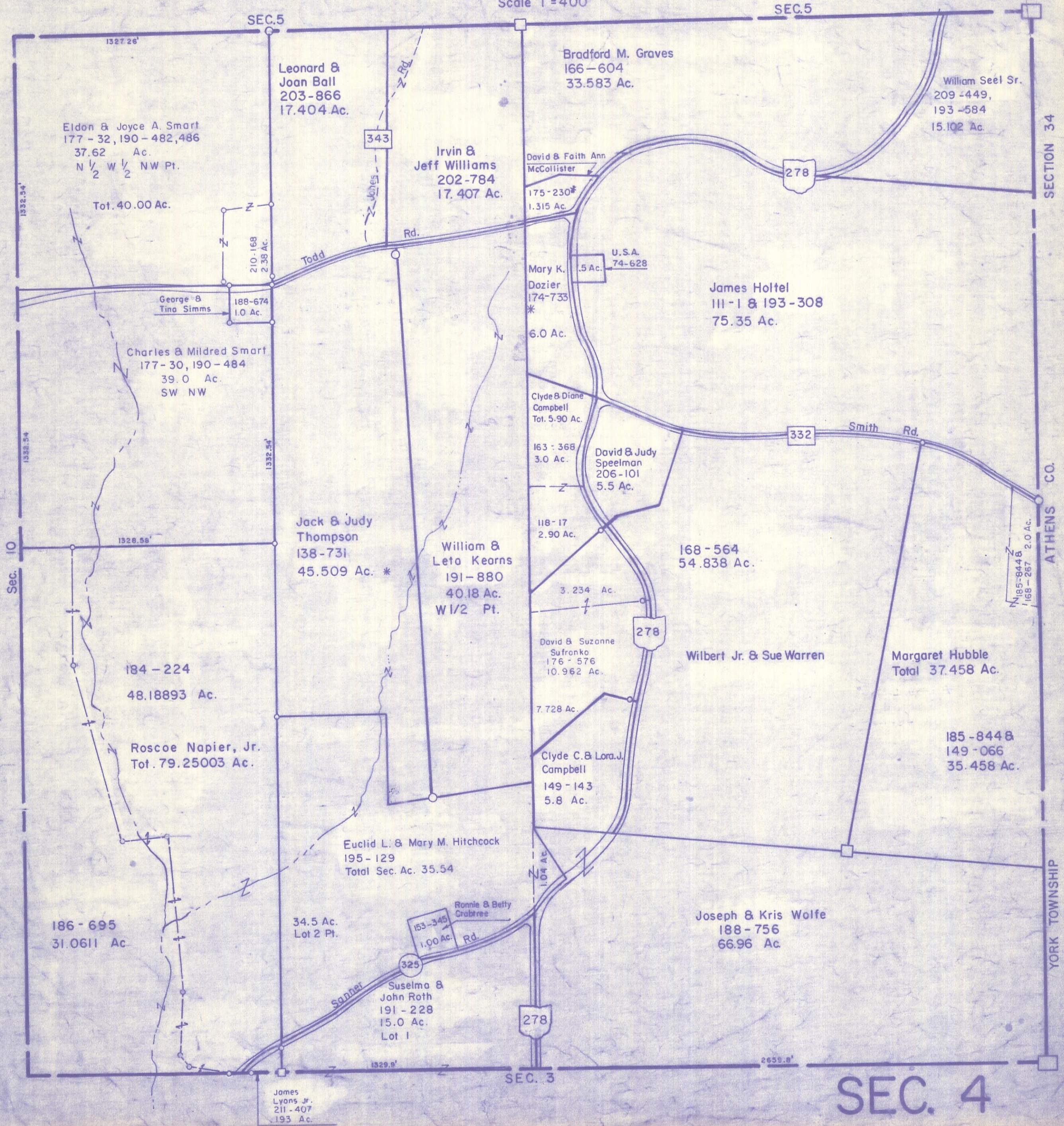


HOCKING COUNTY

Sec. 4 T 12 R 16

STARR TWP.

Scale 1"=400'



Eldon & Joyce A. Smart
177-32, 190-482, 486
37.62 Ac.
N 1/2 W 1/2 NW Pt.
Tot. 40.00 Ac.

Leonard & Joan Ball
203-866
17.404 Ac.

Bradford M. Graves
166-604
33.583 Ac.

William Seel Sr.
209-449,
193-584
15.102 Ac.

Irvin & Jeff Williams
202-784
17.407 Ac.

David & Faith Ann
McCollister
175-230*
1.315 Ac.

278

George & Tina Simms
188-674
1.0 Ac.

Mary K. Dozier
174-733
6.0 Ac.

U.S.A.
74-628
.5 Ac.

James Hottel
III-1 & 193-308
75.35 Ac.

Charles & Mildred Smart
177-30, 190-484
39.0 Ac.
SW NW

Clyde & Diane
Campbell
Tot. 5.90 Ac.

163-368
3.0 Ac.

David & Judy
Speelman
206-101
5.5 Ac.

332

Smith Rd.

Jack & Judy
Thompson
138-731
45.509 Ac. *

William & Leta Kearns
191-880
40.18 Ac.
W 1/2 Pt.

118-17
2.90 Ac.

168-564
54.838 Ac.

3.234 Ac.

David & Suzanne
Sufronko
176-576
10.962 Ac.

Wilbert Jr. & Sue Warren

Margaret Hubble
Total 37.458 Ac.

184-224
48.18893 Ac.

Roscoe Napier, Jr.
Tot. 79.25003 Ac.

7.728 Ac.

Clyde C. & Lora J.
Campbell
149-143
5.8 Ac.

185-8448
149-066
35.458 Ac.

Euclid L. & Mary M. Hitchcock
195-129
Total Sec. Ac. 35.54

1.04 Ac.

186-695
31.0611 Ac.

34.5 Ac.
Lot 2 Pt.

Ronnie & Betty
Crabtree
153-345
1.00 Ac.
Rd.

Joseph & Kris Wolfe
188-756
66.96 Ac.

Suselma & John Roth
191-228
15.0 Ac.
Lot 1

278

1529.9'

2659.8'

James
Lyons Jr.
211-407
193 Ac.

SEC. 3

SEC. 4

SECTION 34

ATHENS CO.

YORK TOWNSHIP